

Fine Jewels

Hong Kong
Thursday 13 May 2021



LUXEFORD
premiere auction experience

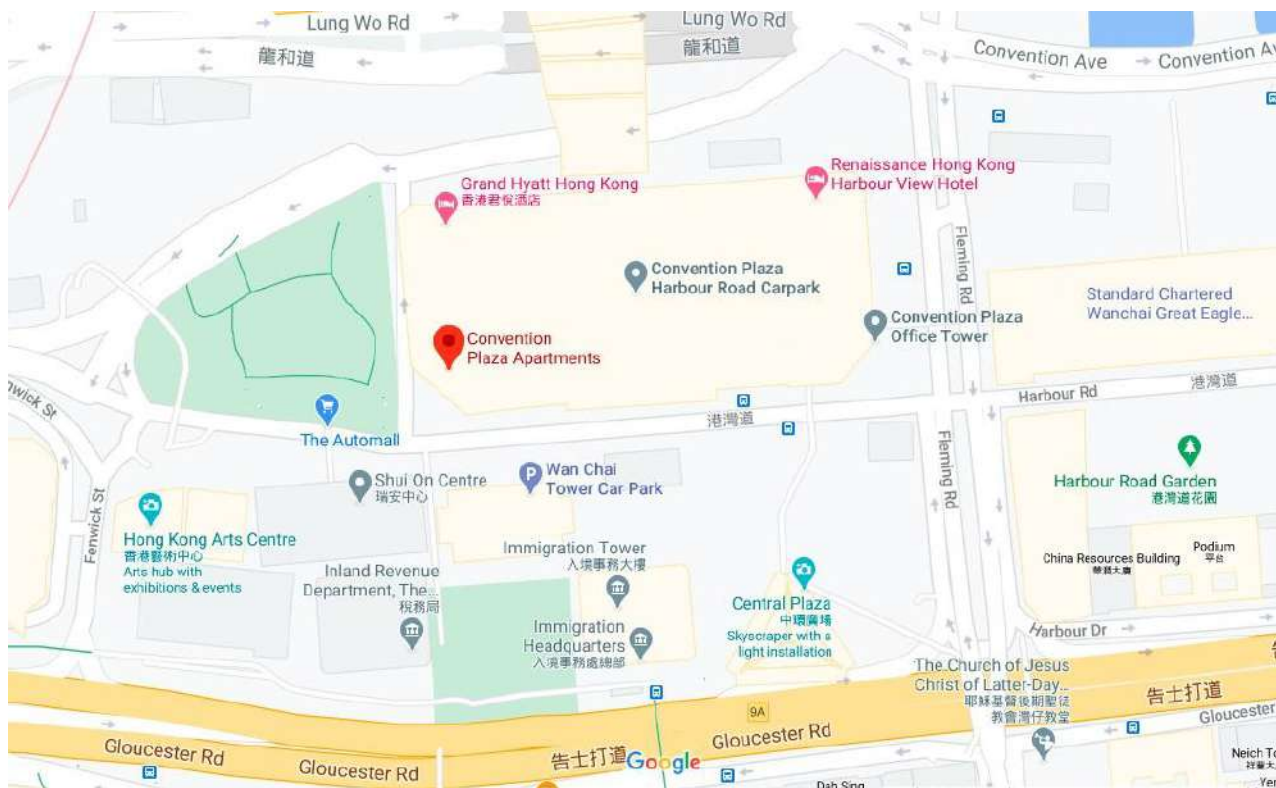


Fine Jewels

**Hong Kong
Thursday 13 May 2021**



LUXEFORD
premiere auction experience



Auction | 13 May 2021 | 2:00pm

PRIVATE VIEWING

by appointment

LUXEFORD HONG KONG LIMITED
SUITE 3015, CONVENTION PLAZA APARTMENTS
1 HARBOUR ROAD
WAN CHAI, HONG KONG

香港灣仔港灣道 1 號
會議展覽中心會景閣 3015 室

Fine Jewels Sale

Sale Number: HK0125

SPRING SILENT SALE IN HONG KONG

2:00pm, Thursday 13 May 2021

Preview

Fine Jewelry

Tuesday	04 May	10:00am – 7:00pm
Wednesday	05 May	10:00am – 7:00pm
Thursday	06 May	10:00am – 7:00pm
Friday	07 May	10:00am – 7:00pm
Saturday	08 May	10:00am – 7:00pm
Sunday	09 May	10:00am – 7:00pm
Monday	10 May	10:00am – 7:00pm
Tuesday	11 May	10:00am – 7:00pm
Wednesday	12 May	10:00am – 1:00pm

PRIVATE VIEWING

LUXEFORD HONG KONG LIMITED
SUITE 3015, CONVENTION PLAZA APARTMENTS
1 HARBOUR ROAD,
WAN CHAI, HONG KONG

Enquiries for this auction:

Head of Jewelry Asia

Edmond Chan
edmond.chan@luxeford.com

Willy Chu
willy.chu@luxeford.com

Bids

bids@luxeford.com

Condition Reports

info@luxeford.com

Payment

accounts@luxeford.com

T +852 2899 2128
M +852 6883 9621
www.luxefordauction.com

For further information on lots in this auction, please contact any of the departments listed above

IMPORTANT NOTICE TO BUYERS

Regardless of the estimate of any lots, Luxeford reserves the right to request from prospective buyers to complete the pre-registration application form and to deliver to Luxeford a deposit of HK\$50,000 or such other higher amount as may be determined by Luxeford. Any financial references, guarantees and/or such other securities as Luxeford may require in its absolute discretion, as security for bids.

A Top Lot refers to all lots with the low estimate of which is HK\$8,000,000. In order to bid on "Top Lots" (^ in print catalogue, in ^ eCatalogue), Luxeford may request from prospective bidders to complete the Pre-registration application form and to deliver to Luxeford a deposit of HK\$1,000,000 for each "Top Lot" or such other higher amount as may be determined by Luxeford and any financial references, guarantees and/or such other security as Luxeford may require in its absolute discretion as security for the bid.

All deposits are to be cleared regardless of payment methods at least 24 hours prior to the beginning of the auction and we encourage new clients to register at least 48 hours in advance of a sale to process registration. Luxeford has no obligation to accept any pre-registration application, and its decision in this regard shall be final.

If a client is not successful on bidding any lot, Luxeford will arrange for refund (subject to any rights of set off) of the deposit amount paid by such client without interest within 14 days from the date of sale. Any exchange losses or fees associated with the refund shall be borne by the client. Clients may not be allowed to register and bid on any lot if clients fail to provide Luxeford a completed pre-registration application form and any financial supporting documents requested by Luxeford.

IMPORTANT NOTICE REGARDING IMPORTATION INTO THE UNITED STATES OF ROLEX WATCHES

Luxeford cannot arrange for the delivery of Rolex watches to the United States because U.S. laws restrict the import of Rolex watches. The buyer or a designated agent may collect the property in the country of sale. Please refer to the Terms and Conditions printed in this catalogue and also listed on our website.

***NOTICE REGARDING GEMSTONES ORIGINATING IN BURMA (MYANMAR)**

Jadeite and rubies of Burmese origin and articles of jewelry less than 100 years old containing such gemstones may not be imported into the U.S. Lots marked with contain rubies or jadeite of Burmese or unknown origin that may be subject to these restrictions. Please refer to the Terms and Conditions printed in this catalogue and also listed on our website.

CONTENTS

Map Location	2
Auction Information & Enquiries	3
Important Notice To Buyers	4
Contents	5
Index of Makers / Colorless & Colored Diamonds	68
Diamond Color & Clarity Grading	70
Handbag Stamps	70
Ring Size Chart	71
Important Notice	72
Condition of Business	74
Payment Instructions	84
Absentee / Telephone / Safety Bid Form	85

LOTS 2931 – 2985

FRONT COVER LOT 2985
BACK COVER LOT 2981



2931



2932

SIDE VIEW

The Property of A Lady

2931

A PAIR OF DIAMOND PINS

Each openwork convex pin set throughout with rose-cut diamonds, accentuated with pavé-set brilliant-cut diamond outlines, mounted in 18K white gold, *length 2.80 cm (2)*

鑽石別針一對 鑲18K白金 長度2.80公分

HK\$ 30,000 - 50,000 US\$ 3,800 - 6,500 No Reserve

2932

A STAR SAPPHIRE AND DIAMOND RING

Centering upon an oval cabochon purple star sapphire, embellished by the pavé-set diamond criss-cross mount, suspending two briolette diamond highlights, to the stylized diamond-set bifurcated quarter-hoop, mounted in 18K white gold, *purple star sapphire weighing approximately 11.41 carats, diamonds weighing approximately 2.50 carats in total, ring size 6½*

Accompanied by a report from the GemResearch Swisslab, stating that the approximately 11.41 carat natural star sapphire is purple color, originates from Sri Lanka and has no indication of thermal treatment, report no. GRS2018-058946, dated 30th May 2018

約11.41克拉橢圓形蛋面斯里蘭卡天然星光藍寶石戒指 配以小鑽 鑲18K白金 鑽石共重約2.50克拉 戒指尺寸6½, 附GRS證書

HK\$ 45,000 - 65,000 US\$ 5,800 - 8,200



2933



2934

2933

AN UNMOUNTED AQUAMARINE

One rectangular step-cut aquamarine weighing 24.19 carats, *measuring approximately 20.00 x 15.00 x 11.00 mm*

長八角形梯式切磨海藍寶石重約 24.19 克拉，尺寸約 20.00x15.00x11.00 毫米

HK\$ 75,000 - 95,000 US\$ 9,400 - 12,000

The Property of A Lady

2934

A COLORED SAPPHIRE AND DIAMOND RING, BY ADLER

Of crossover design, set with a pear-shaped pink and blue sapphire, each within the pavé-set brilliant-cut diamond surround, to the diamond-set three-quarter-hoop, mounted in 18K white gold, *sapphires weighing approximately 3.80 carats in total, signed ADLER, includes original fitted box, ring size 5½*

枕形粉紅色及彩藍色藍寶石戒指，配以小鑽，鑲 18K 白金，藍寶石共重約 3.80 克拉，戒指尺寸 5½，附原盒，ADLER 設計

HK\$ 30,000 - 50,000 US\$ 3,800 - 6,500 **No Reserve**



2935



2936

2935 *

A PAIR OF CONCH SHELL, RUBY AND DIAMOND EAR PENDANTS

The lattice designed fan-shaped panels each set with circular-cut rubies and diamonds, suspending seven round cabochon conch shells, surmounted by the circular-cut ruby and diamond cluster, mounted in 18K white gold, *conch shells, rubies and diamonds weighing approximately 16.80, 4.15 and 3.20 carats in total respectively, length 6.20 cm (2)*

紅寶石及粉紅色海螺珠吊耳墜，配以小鑽，鑲 18K 白金，海螺珠、紅寶石及鑽石共重約 16.80 克拉、4.15 及 3.20 克拉，耳墜長度 6.20 公分

HK\$ 40,000 - 60,000 US\$ 5,000 - 7,500

2936

A SPINEL AND DIAMOND RING

Set with a cushion-cut pinkish purple spinel, to the diamond-set half hoop, mounted in 18K white and yellow gold, *spinel weighing approximately 9.80 carats, ring size 6¼*

枕形濃彩粉紅紫色尖晶石戒指，配以小鑽，鑲 18K 白金及黃金，尖晶石重約 9.80 克拉，戒指尺寸 6¼

HK\$ 40,000 - 60,000 US\$ 5,000 - 7,500



2937

2937 *

A PERIDOT, RUBY AND DIAMOND RING

Centering upon an oval-cut peridot, accentuated by the brilliant-cut diamond surround, bordered with oval- and cushion-cut rubies, to the plain hoop, mounted in 18K white gold, *peridot weighing approximately 15.40 carats, rubies weighing approximately 6.00 carats in total, ring size 6¼*

橢圓形橄欖石戒指，配以紅寶石及小鑽，鑲 18K 白金，橄欖石重約 15.40 克拉，紅寶石共重約 6.00 克拉，戒指尺寸 6¼

HK\$ 16,000 - 25,000 US\$ 2,000 - 3,200



2938



2939



2940

2938

A PAIR OF COLORED DIAMOND AND DIAMOND EARRINGS

Each designed as a flower, centered with brilliant-cut diamond pistils, embellished with pavé-set brilliant-cut pink hue diamond petals, mounted in 18K white and rose gold, *diamonds weighing approximately 2.15 carats in total, length 2.00 cm (2)*

粉紅色彩鑽及鑽石耳環 一對，配以小鑽，鑲 18K 粉紅金及白金，彩鑽及鑽石共重約 2.15 克拉，耳環長度 2.00 公分

HK\$ 28,000 - 48,000 US\$ 3,500 - 6,000

2939

A PAIR OF DIAMOND AND COLORED DIAMOND EARRINGS

Each designed as a flower, centered with brilliant-cut pink hue diamond pistils, embellished with pavé-set brilliant-cut diamond petals, mounted in 18K white and rose gold, *diamonds weighing approximately 2.10 carats in total, length 2.00 cm (2)*

鑽石及粉紅色彩鑽耳環 一對，配以小鑽，鑲 18K 白金及粉紅金，鑽石及彩鑽共重約 2.10 克拉，耳環長度 2.00 公分

HK\$ 25,000 - 45,000 US\$ 3,200 - 5,800



2941



2940

A COLORED DIAMOND AND DIAMOND RING/PENDANT

Centering upon a cut-cornered rectangular-cut fancy purplish pink diamond weighing 0.59 carat, bordered by brilliant-cut pink hue diamonds, embellished by the tapered-baguette- and brilliant-cut diamond openwork geometric surround, to the detachable diamond-set half hoop, mounted in 18K white and rose gold, *other diamonds weighing approximately 1.25 carats in total, ring size 6*

Accompanied by a report from the Gemological Institute of America, stating that the 0.59 carat diamond is fancy purplish pink, natural color and SI2 clarity, with laser inscription registry, report no. 2317581626, dated 18th January 2019

0.59 克拉切角長方形改良明亮式切磨彩紫粉紅色彩色鑽石 SI2 彩色鑽石戒指/吊墜，配以小鑽，鑲 18K 白金及粉紅金，戒指尺寸 6，附 GIA 證書及鐳射刻印編號

HK\$ 120,000 - 180,000 US\$ 15,000 - 23,000

The Property of A Lady

2941

A COLORED DIAMOND AND DIAMOND PENDANT NECKLACE, BY CHOW TAI FOOK

Set with a heart-shaped fancy yellow-brown diamond weighing 3.28 carats, within the two-tiered brilliant-cut diamond frame, joined to the slender neckchain, mounted in platinum, 18K white and yellow gold, *signed CTF, pendant length 2.30 cm, neckchain length 46.30 cm*

Accompanied by a report from the Gemological Institute of America, stating that the 3.28 carat diamond is fancy yellow-brown, natural color and I1 clarity, with laser inscription registry, report no. 2101253983, dated 13th October 2008

3.28 克拉心形明亮式鮮粉黃棕色 I1 彩色鑽石吊墜項鍊，配以小鑽，鑲鉑金、18K 白金及黃金，吊墜長度 2.30 公分，項鍊長度 46.30 公分，附 GIA 證書，周大福設計

HK\$ 100,000 - 200,000 US\$ 13,000 - 25,000



2942



2943

2942

A CLAM PEARL AND DIAMOND RING

Set with a semi-round clam pearl, to the pavé-set brilliant-cut diamond half hoop, mounted in 18K white gold, *clam pearl weighing approximately 14.45 carats, ring size 6¼*

The historical CITES paperwork for this lot is not available and it will not be possible to obtain a CITES export permit to ship this item outside Hong Kong after the sale. Please refer to the IMPORTANT NOTICE at the back of this catalogue

硨磲珍珠戒指，配以小鑽，鑲 18K 白金，硨磲珍珠約 14.45 克拉，戒指尺寸 6¼

競投人留意此拍品無法提供過去的瀕危野生動植物種國際貿易公約之文件，表示此拍品將不能確保獲取出口香港的許可證，詳情請參閱本圖錄後頁之重要通知

HK\$ 22,000 - 42,000 US\$ 2,800 - 5,300

2943

A PAIR OF CONCH PEARL, SEED PEARL AND DIAMOND EAR PENDANTS

Of chandelier design, each suspending three oval-shaped conch pearls, accentuated by the seed pearl and brilliant-cut diamond surround, to the similarly-cut diamond surmount, mounted in 18K white gold, *conch pearls and diamonds weighing approximately 7.80 and 1.65 carats in total, length 5.00 cm (2)*

The historical CITES paperwork for this lot is not available and it will not be possible to obtain a CITES export permit to ship this item outside Hong Kong after the sale. Please refer to the IMPORTANT NOTICE at the back of this catalogue

海螺珍珠耳墜，配以小珍珠及小鑽，鑲 18K 白金，海螺珍珠共重約 7.80 克拉，鑽石共重約 1.65 克拉，耳墜長度 5.00 公分

競投人留意此拍品無法提供過去的瀕危野生動植物種國際貿易公約之文件，表示此拍品將不能確保獲取出口香港的許可證，詳情請參閱本圖錄後頁之重要通知

HK\$ 38,000 - 58,000 US\$ 4,800 - 7,300



2944

2944

A CONCH PEARL AND DIAMOND PENDANT NECKLACE

Suspending an oval-shaped conch pearl, enhanced by an oval-shaped diamond-set frame, joined to the slender neckchain, mounted in platinum and 18K white gold, *conch pearl weighing approximately 4.65 carats, pendant length 2.70 cm, neckchain length 39.60 cm*

The historical CITES paperwork for this lot is not available and it will not be possible to obtain a CITES export permit to ship this item outside Hong Kong after the sale. Please refer to the IMPORTANT NOTICE at the back of this catalogue

海螺珍珠吊墜項鍊，配以小鑽，鑲鉑金及 18K 白金，海螺珍珠共重約 4.65 克拉，吊墜長度 2.70 公分，項鍊長度 39.60 公分

競投人留意此拍品無法提供過去的瀕危野生動植物種國際貿易公約之文件，表示此拍品將不能確保獲取出口香港的許可證，詳情請參閱本圖錄後頁之重要通知

HK\$ 58,000 - 88,000 US\$ 7,300 - 11,000



2945



2946

2945

A PAIR OF COLORED DIAMOND AND DIAMOND EARRINGS

Designed as an openwork twirl set with pear-shaped diamonds, each centered with a cushion-cut fancy intense yellow diamond weighing 0.59 and 0.56 carat respectively, mounted in 18K white and yellow gold, *other diamonds weighing approximately 2.10 carats in total, length 1.30 cm (2)*

Accompanied by a report from the Gemological Institute of America, stating that the 0.59 carat diamond is fancy intense yellow, natural color and VVS2 clarity, with laser inscription registry, report no. 6331536800, dated 4th September 2019

Accompanied by a report from the Gemological Institute of America, stating that the 0.56 carat diamond is fancy intense yellow, natural color and Internally Flawless clarity, with laser inscription registry, report no. 2327461534, dated 10th April 2019

0.59 克拉及 0.56 克拉改良方形明亮式切磨濃彩黃色 VVS2-IF 彩色鑽石耳環，配以小鑽，鑲 18K 白金及黃金，其它鑽石共重約 2.10 克拉，耳環長度 1.30 公分，附 GIA 證書及鐳射刻印編號

HK\$ 50,000 - 80,000 US\$ 6,500 - 10,000

2946

A COLORED DIAMOND AND DIAMOND RING

Of crossover design, set with a heart-shaped fancy yellow and fancy light pink diamond weighing 0.84 and 0.77 carat respectively, to the brilliant-cut diamond three-quarter-hoop, mounted in 18K white, yellow and rose gold, *ring size 6½*

Accompanied by a report from the Gemological Institute of America, stating that the 0.84 carat diamond is fancy yellow, natural color and SI2 clarity, report no. 2115022252, dated 7th August 2009

Accompanied by a report from the Gemological Institute of America, stating that the 0.77 carat diamond is fancy light pink, natural color and VS1 clarity, with laser inscription registry, report no. 1162841704, dated 26th August 2020

0.84 克拉心形鮮粉黃色 SI2 彩色鑽石及 0.77 克拉心形淡彩粉紅色 VS1 彩色鑽石戒指，鑲 18K 白金、黃金及粉紅，戒指尺寸 6½，附 GIA 證書及鐳射刻印編號

HK\$ 170,000 - 250,000 US\$ 22,000 - 32,000



2947

2947

A COLORED DIAMOND AND DIAMOND RING

Set with a pear-shaped fancy intense yellow diamond weighing 5.04 carats, flanked by heart-shaped diamonds weighing 0.30 and 0.30 carat respectively, to the plain hoop, mounted in 18K white and yellow gold, *ring size 6*

Accompanied by a report from the Gemological Institute of America, stating that the 5.04 carat diamond is fancy intense yellow and natural color, with laser inscription registry, report no. 3285106263, dated 27th August 2019

Accompanied by two reports from the Gemological Institute of America, stating that the 0.30 carat and 0.30 carat diamonds are F color and SI1 clarity, with laser inscription registries, report nos. 2367782205 and 6214329714, dated 28th November 2020 and 11th December 2020

5.04 克拉梨形明亮式切磨濃彩黃色彩色鑽石戒指，配以小鑽，鑲 18K 白金及黃金，鑽石重約 0.30 克拉 F/SI1 及 0.30 克拉 F/SI1，戒指尺寸 6，附 GIA 證書及鐳射刻印編號

HK\$ 220,000 - 300,000 US\$ 28,000 - 38,000



2948

2948

AN EMERALD AND DIAMOND RING

Centering upon an octagonal step-cut emerald weighing 5.24 carats, flanked by the asscher-cut diamond shoulders, to the plain hoop, mounted in 18K white gold, *diamonds weighing approximately 2.05 carats in total, ring size 6½*

Accompanied by a report from the GemResearch Swisslab, stating that the 5.24 carat natural emerald is green color, originates from Brazil and has minor clarity enhancement, report no. GRS2019-128546, dated 20th December 2019

5.24 克拉八角形梯式切磨巴西祖母綠戒指，配以小鑽，鑲 18K 白金，鑽石共重約 2.05 克拉，戒指尺寸 6½，附 GRS 證書

HK\$ 160,000 - 250,000 US\$ 20,000 - 32,000





2949



2950

COLOR CHANGED

2949

A PAIR OF CULTURED PEARL, AQUAMARINE AND DIAMOND EAR PENDANTS

Each suspending a drop-shaped Tahitian cultured pearl, to the line of brilliant-cut diamonds and octagonal step-cut aquamarine surmount, mounted in 18K white gold, *cultured pearls measuring approximately 14.05 x 12.90 mm, aquamarines weighing approximately 4.50 carats in total, length 4.20 cm*

養殖珍珠耳墜，2顆大溪地養殖珍珠，配以方八角形海藍寶石及小鑽，鑲 18K 白金，養殖珍珠尺寸約 14.05 x 12.90 毫米，海藍寶石共重約 4.50 克拉，耳墜長度 4.20 公分

HK\$ 20,000 - 40,000 US\$ 2,500 - 5,000

2950

A COLOR-CHANGE SAPPHIRE AND DIAMOND RING

Set with an cushion-cut color-change sapphire, flanked by the shield step-cut diamond shoulders, to the plain hoop, mounted in 18K white gold, *sapphire weighing approximately 15.97 carats, diamonds weighing approximately 1.05 carats in total, ring size 6½*

Accompanied by a report from the Gemresearch SwissLab, stating that the approximately 15.97 carat natural sapphire shows color-changing in different lights: blue in daylight to purple in incandescent light, originates from Sri Lanka and has no indication of thermal treatment, report no. GRS2020-038240, dated 12th March 2020

約 15.97 克拉枕形斯里蘭卡天然變色藍寶石戒指，配以鑽石，鑲 18K 白金，鑽石共重約 1.05 克拉，戒指尺寸 6½，附 GRS 證書

HK\$ 400,000 - 600,000 US\$ 50,000 - 75,000





2951



2952

2951

A PAIR OF EMERALD AND DIAMOND EAR PENDANTS

Each suspending a rectangular step-cut emerald weighing 2.08 and 1.89 carats respectively, within the circular-cut diamond surround and link, mounted in 18K white gold, *length 3.00 cm (2)*

Accompanied by a report from the American Gemological Laboratories, stating that the 2.08 carat natural emerald is green color, originates from Colombia and clarity enhancement none, report no. 1112152, dated 21st January 2021

Accompanied by a report from the American Gemological Laboratories, stating that the 1.89 carat natural emerald is green color, originates from Colombia and has minor clarity enhancement, report no. 1112153, dated 21st January 2021

Accompanied by a report from the Gemological Institute of America, stating that the natural emeralds are green color, originates from Colombia, one has minor clarity enhancement and the other has no indications of clarity enhancement, report no. 2193059580, dated 29th January 2018

2.08 及 1.89 克拉長方形梯式切磨哥倫比亞天然祖母綠戒指，配以小鑽，鑲 18K 白金，吊耳環長度 3.00 公分，附 AGL 及 GIA 證書

HK\$ 150,000 - 250,000 US\$ 19,000 - 32,000

2952

AN EMERALD AND DIAMOND RING

Set with a rectangular step-cut emerald weighing 3.43 carats, flanked by four marquise-cut diamonds, to the plain hoop, mounted in 18K yellow gold, *ring size 5½*

Accompanied by a report from the American Gemological Laboratories, stating that the 3.43 carat natural emerald is green color, originates from Colombia and clarity enhancement none, report no. 1110467, dated 16th October 2020

3.43 克拉長方形梯式切磨哥倫比亞天然祖母綠戒指，配以小鑽，鑲 18K 黃金，戒指尺寸 5½，附 AGL 證書

HK\$ 120,000 - 180,000 US\$ 15,000 - 23,000



2953

2953 *

A RUBY AND DIAMOND RING

Set with a circular-cut ruby weighing 2.23 carats, surrounded by undulating baguette-cut diamonds, to the stylized diamond-set bifurcated quarter-hoop, mounted in 18K white and yellow gold, *diamonds weighing approximately 1.65 carats in total, ring size 8½*

Accompanied by a report from the Gübelin Gem Lab, stating that the 2.23 carat natural ruby is purplish-red color, originates from Burma (Myanmar) and has no indications of thermal enhancement, report no. 0109305, dated 5th October 2001

2.23 克拉圓形混合式切磨緬甸天然紅寶石戒指，配以小鑽，鑲 18K 白金及黃金，鑽石共重約 1.65 克拉，戒指尺寸 8½，附 GÜBELIN 證書

HK\$ 70,000 - 90,000 US\$ 9,000 - 12,000



2954



2955

2954

AN EMERALD AND DIAMOND BROOCH/PENDANT

Centering upon a rectangular-cut emerald, within a pierced octagonal-shaped diamond plaque, bordered with pavé-set old European- and old mine-cut diamonds, mounted in platinum and 18K yellow gold, *circa 1930, emerald weighing approximately 6.25 carats, diamonds weighing approximately 4.00 carats in total, length 3.50 cm*

Accompanied by a report from the American Gemological Laboratories, stating that the natural emerald is green color, originates from Colombia and has minor clarity enhancement, report no. 1110144, dated 6th October 2020

祖母綠胸針/吊墜，配以老歐洲式切磨小鑽，鑲鉑金及 18K 黃金，約 1930 年代製作，祖母綠重約 6.25 克拉，鑽石共重約 4.00 克拉，胸針長度 3.50 公分，附 AGL 證書

HK\$ 95,000 - 150,000 US\$ 12,000 - 19,000

2955 *

A RUBY AND DIAMOND RING

Centering upon an oval-cut ruby, flanked by the trilliant-cut diamond shoulders, to the plain hoop, mounted in yellow gold, *ruby weighing approximately 5.00 carats, ring size 4½*

Accompanied by a report from the American Gemological Laboratories, stating that the natural ruby is red color, originates from Burma (Myanmar) and heat enhancement none, report no. 1107758, dated 13th March 2020

Accompanied by a report from the GemResearch Swisslab, stating that the approximately 5.00 carat natural ruby is vivid red color (GRS type 'pigeon's blood'), originates from Burma (Mogok, Myanmar) and has no indication of thermal treatment, report no. GRS2019-069327, dated 21st June 2019

約 5.00 克拉橢圓形緬甸「抹谷」天然「鴿血紅」紅寶石戒指，配以小鑽，鑲黃金，戒指尺寸 4½，附 AGL 及 GRS 證書

HK\$ 500,000 - 800,000 US\$ 63,000 - 100,000





2956

2956 *

A PAIR OF RUBY AND DIAMOND EAR PENDANTS

Each drop-shaped hoop bordered with caliber-cut rubies and brilliant-cut diamonds, joined by a line of collet-set brilliant-cut diamonds, to the similarly-designed surmount, mounted in 18K white gold, *rubies and diamonds weighing approximately 3.60 and 1.00 carats in total respectively, length 5.00 cm (2)*

紅寶石及鑽石吊耳墜，配以小鑽，鑲 18K 白金，紅寶石及鑽石共重約 3.60 克拉及 1.00 克拉，耳墜長度 5.00 公分

HK\$ 30,000 - 50,000 US\$ 3,800 - 6,500



2957

The Property of A Lady

2957 *

A JADEITE AND DIAMOND BROOCH/PENDANT NECKLACE

Suspending two jadeite 'Huaigu' of emerald green color and good translucency, decorated with pavé-set brilliant-cut diamond spray motifs and surmount, joined by the gold-plated silver neckchain, mounted in 18K white gold, *largest jadeite measuring approximately 24.50 mm, pendant length 5.90 cm, neckchain length 42.50 cm*

Accompanied by a gemological report, stating that the 'Huaigu' disc is natural jadeite and no resin is detected, report no. SC127527, dated 10th September 2018

天然翡翠雙「懷古」別針/吊墜項鍊，配以小鑽，鑲 18K 白金及純銀黃白分色項鍊，翡翠尺寸約 24.50 毫米，吊墜長度 5.90 公分（可拆除），項鍊長度 42.50 公分，附證書

HK\$ 30,000 - 50,000 US\$ 3,800 - 6,500 **No Reserve**





2958

2958

A SET OF GOLD AND QUARTZ JEWELRY, BY NANIS

Comprising a yellow gold double chain necklace jointed by four textured oval-shaped links; and a bracelet and a smoky quartz ring en suite, all mounted in 18K yellow gold, *total weighing approximately 60.79 dwts, all signed NANIS, with Italian hallmarks, necklace length 47.00 cm, bracelet length 18.00 cm, ring size 7 (3)*

18K 黃金項鍊、手鍊及橢圓形煙水晶裸石戒指套裝，黃金重約 60.79 dwt，項鍊長度 47.00 公分及手鍊長度 18.00 公分，戒指尺寸 7，NANIS 設計

HK\$ 50,000 - 80,000 US\$ 6,300 - 10,000



2959

2959

A RUBELLITE TOURMALINE, SAPPHIRE AND DIAMOND BANGLE, BY MARIO BUCCELLATI

The textured gold hinged cuff bangle, centered with an oval-cut rubellite tourmaline, within the circular-cut sapphire and diamond surround with pierced details, enhanced by the engraved foliate motifs, mounted in 18K white and yellow gold, *rubellite tourmaline weighing approximately 21.70 carats, signed M. BUCCELLATI, with Italy hallmarks, inner 57.00 mm*

碧璽及藍寶石手鐲，配以小鑽，鑲 18K 白金及黃金，碧璽重約 21.70 克拉，內徑 57.00 毫米，MARIO BUCCELLATI 設計

HK\$ 150,000 - 250,000 US\$ 19,000 - 32,000



2960

The Property of A Lady

2960

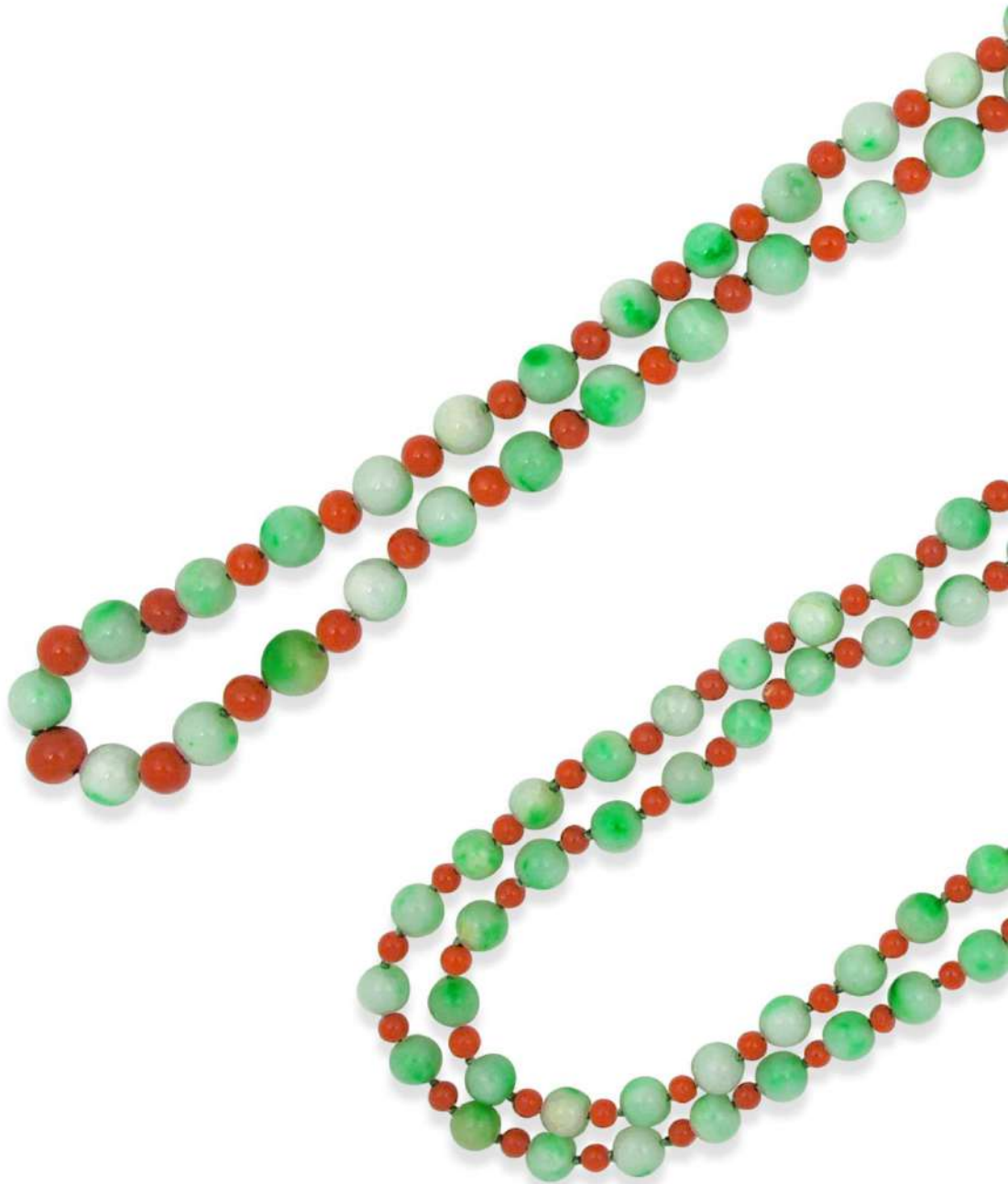
A PREHNITE, TSAVORITE GARNET AND DIAMOND PENDENT NECKLACE

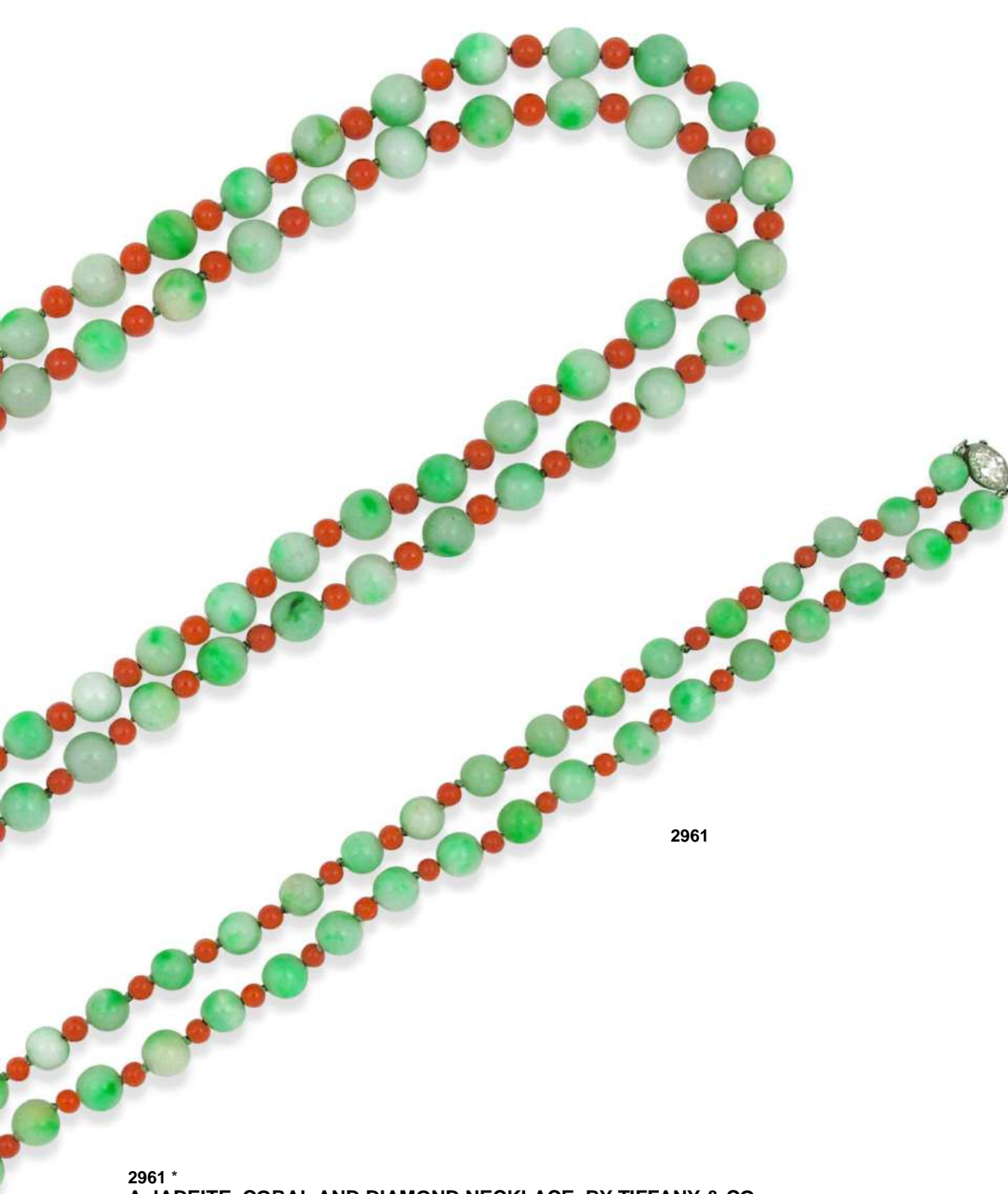
Designed as a peapod set with three oval tri-color prehnite cabochons, pavé-set throughout with circular-cut tsavorite garnets, within the polished gold border, to the brilliant-cut diamond foliate surmount, representing the rebus of happiness, wealth and longevity, to the length adjustable black cord, mounted in 18K white and yellow gold, *center prehnite weighing approximately 20.34 carats, other prehnites and tsavorite garnets weighing approximately 37.40 and 13.05 carats in total respectively, pendent length 8.30 cm*

Accompanied by a gemological report, stating that the approximately 20.34 carat natural prehnite is blue-green color and has no indications of heating/treatment, report no. 2953-1566, dated 20th February 2019

三色葡萄石、綠榴石「福祿壽」吊墜項鍊，配以小鑽，鑲 18K 白金及黃金，豆莢內三顆豌豆寓意『多福、多祿、多壽』，中間葡萄石重約 20.34 克拉，其它葡萄石共重約 37.40 克拉，綠榴石共重約 13.05 克拉，吊墜長度 8.30 公分，附證書

HK\$ 40,000 - 60,000 US\$ 5,000 - 7,500





2961

2961 *

A JADEITE, CORAL AND DIAMOND NECKLACE, BY TIFFANY & CO.

Comprising one hundred thirty-six slightly graduated jadeite beads of pale green color with bright green suffusion and good translucency, alternating with coral beads, to the millegrain-set marquise-cut diamond clasp, mounted in platinum, *jadeite beads measuring approximately 9.70 to 6.20 mm, coral beads measuring approximately 9.50 to 3.70 mm, signed TIFFANY, length 93.50 cm*

This lot is subject to CITES import/export restrictions. Potential bidders who intend to export this lot are advised that certain permits may be required for export. Buyers are responsible for obtaining necessary import/export licenses or permits and payment incurred

翡翠珠項鍊，136 顆翡翠珠以小珊瑚珠相間，配以鑽石鍊釦，鑲鉑金，翡翠珠尺寸約 9.70-6.20 毫米，珊瑚珠尺寸約 9.50-3.70 毫米，項鍊長度 93.50 公分，TIFFANY & CO.設計

此拍品受瀕危野生動植物種國際貿易公約之進出口管制，競投人留意申領進出口許可證

HK\$ 120,000 - 180,000 US\$ 15,000 - 23,000



2962

2962 *

A JADEITE AND DIAMOND NECKLACE, BY BULGARI

Designed as a line of thirty-three graduated jadeite beads of green color with apple green suffusions and high translucency, to a brilliant-and baguette-cut scroll clasp, mounted in platinum, *three jadeite beads measuring approximately 15.59 x 15.45 to 15.90 x 15.66 mm, signed BULGARI, length 49.00 cm*

Accompanied by a copy of report from the Gemological Institute of America stating that the three jadeite beads are jadeite jade, have no indications of impregnation, report no. 6197623010 dated 7th September 2018

33 顆天然翡翠珠項鍊，配以小鑽鍊扣，鑲鉑金，3 顆翡翠珠直徑約 15.59x15.45 毫米至 15.90x15.66 毫米，項鍊長度 49.00 公分，附 GIA 證書副本，BULGARI 設計

HK\$ 280,000 - 380,000 US\$ 35,000 - 48,000





2963

2963

A DIAMOND PENDANT NECKLACE, BY CARTIER

Of art deco design, suspending a detachable baguette-, marquise- and circular-cut diamond swag, embellished by the vari-cut diamond V-shaped openwork frame, to the diamond-set backchain, mounted in platinum, *circa 1930, diamonds weighing approximately 15.00 carats in total, signed CARTIER, with maker's mark, includes original fitted box, pendant length 2.50 cm, necklace length 35.00 cm*

鑽石吊墜項鍊，鑲鉑金，約 1930 年代製作，鑽石共重約 15.00 克拉，可拆開成吊墜掛件，吊墜長度 2.50 公分，項鍊長度 35.00 公分，附原盒，CARTIER 設計

HK\$ 300,000 - 500,000 US\$ 38,000 - 63,000



Cartier



2964

2964

AN ART DECO SAPPHIRE AND DIAMOND DOUBLE CLIP BROOCHES

Of chevron design, each brooch pavé-set with circular- and baguette-cut diamond ribbons, highlighted with an openwork circular-cut sapphire cluster, mounted in platinum, *circa 1935, diamonds and sapphires weighing approximately 10.00 and 8.00 carats in total respectively, length 6.30 cm (2)*

藝術時期鑽石胸針，鑲鉑金，鑽石共重約 10.00 克拉，藍寶石共重約 8.00 克拉，約 1935 年代製作，胸針長度 6.30 公分

HK\$ 150,000 - 250,000 US\$ 19,000 - 32,000





2965

2965 *

A JADEITE AND DIAMOND RING

Set with a saddle-top shape jadeite cabochon of vivid emerald green color and high translucency, accented by the pavé-set brilliant-cut diamond surround, extending to the half-hoop, mounted in 18K white gold, *jadeite measuring 19.10 x 8.90 x 5.06 mm, diamonds weighing approximately 2.45 carats in total, ring size 6¼*

Accompanied by a report from the Hong Kong Jade & Stone Laboratory, stating that the saddle-top shape cabochon is natural jadeite and no resin is detected, report no. SJ 200165, dated 7th April 2021

天然翡翠馬鞍面戒指，配以小鑽，鑲 18K 白金，翡翠尺寸 19.10x8.90x5.06 毫米，鑽石共重約 2.45 克拉，戒指尺寸 6¼，附 HKJSL 證書

HK\$ 360,000 - 550,000 US\$ 45,000 - 70,000





2966

2966 *

A JADEITE AND DIAMOND RING

Set with a high-domed oval jadeite cabochon of vivid emerald green color and high translucency, embellished by the brilliant-cut diamond surround and scalloped border, to the quarter-hoop, mounted in 18K white gold, *jadeite measuring approximately 15.68 x 13.87 x 5.62 mm, diamonds weighing approximately 2.40 carats in total, ring size 6½*

Accompanied by a report from the Hong Kong Jade & Stone Laboratory, stating that the cabochon is natural jadeite and no resin is detected, report no. SJ 200163, dated 7th April 2021

天然翡翠蛋面戒指，配以小鑽，鑲 18K 白金，翡翠蛋面尺寸約 15.68x13.87x5.62 毫米，鑽石共重約 2.40 克拉，戒指尺寸 6½，附 HKJSL 證書

HK\$ 1,250,000 - 2,250,000 US\$ 157,000 - 282,000





2967

2967 *

A JADEITE AND DIAMOND PENDANT

Carved as a peapod of brilliant emerald green color and high translucency, partially bordered with pavé-set brilliant-cut diamonds, surmounted by a pear-shaped diamond and brilliant-cut surround, mounted in 18K white gold, *peapod measuring approximately 40.19 x 14.33 x 7.23 mm, length 5.20 cm*

Accompanied by a report from the Hong Kong Jade & Stone Laboratory, stating that the peapod plaque is natural jadeite and no resin is detected, report no. SJ 200162, dated 7th April 2021

The peapod symbolizes growth and prosperity in the tradition of Chinese society; the three peas represent luck, wealth and longevity, together they bring a combination of good fortune.

天然翡翠豆莢吊墜，配以小鑽，鑲 18K 白金，豆莢尺寸 40.19x14.33x7.23 毫米，吊墜長度 5.20 公分，豆莢內三顆豌豆寓意『多福、多祿、多壽』

HK\$ 1,350,000 - 1,850,000 **US\$ 169,000 - 232,000**





2968

2968

AN EMERALD AND DIAMOND RING

Set with a heart-shaped emerald, accentuated by the undulating pear-shaped diamond surround, to the bifurcated plain hoop, mounted in platinum and 18K yellow gold, *emerald weighing approximately 13.66 carats, diamonds weighing approximately 5.05 carats in total, ring size 6¼*

Accompanied by a report from the Gübelin Gem Lab, stating that the approximately 13.66 carat natural emerald is green color, has indications of minor clarity enhancement, report no. 0209405, dated 9th October 2002

Accompanied by a report from the Gemological Institute of America, stating that the approximately 13.66 carat natural emerald is green color, originates from Russia and has moderate clarity enhancement, report no. 5376391503, dated 23rd February 2021

約 13.66 克拉心形改良明亮式切磨俄羅斯祖母綠鑽石戒指，配以小鑽，鑲鉑金及 18K 黃金，鑽石共重約 5.05 克拉，戒指尺寸 6¼，附 Gübelin 及 GIA 證書

HK\$ 500,000 - 800,000 US\$ 63,000 - 100,000





2969



2970

2969

A DIAMOND RING

Centering upon a square emerald-cut diamond weighing 3.51 carats, to the bi-colored square-shaped band, mounted in 18K white and yellow gold, *ring size 4¼*

Accompanied by a report from the Gemological Institute of America, stating that the 3.51 carat diamond is K color and VS1 clarity, with laser inscription registry, report no. 2151621906, dated 7th October 2013

Accompanied by a report from HRD Antwerp, stating that the 3.51 carat diamond is J color and VS1 clarity, report no. 14001685001, dated 20th January 2014

3.51 克拉方形梯式切磨 K/VS1 鑽石戒指，鑲 18K 白金及黃金，戒指尺寸 4¼，附 GIA 證書及鐳射刻印編號

HK\$ 130,000 - 180,000 US\$ 17,000 - 23,000

2970

AN EMERALD AND DIAMOND RING, BY M. GÉRARD

Centering on a rectangular step-cut emerald weighing 4.67 carats, within the brilliant-cut diamond surround, to the trifurcated quarter-hoop, mounted in 18K yellow gold, *diamonds weighing approximately 2.00 carats in total, signed M. GÉRARD, no. CS 1433, with French hallmarks, ring size 5¾*

Accompanied by a report from the American Gemological Laboratories, stating that the 4.67 carats natural emerald is green color, originates from Ethiopia and clarity enhancement none, report no. 1093747, dated 11th July 2018

Accompanied by a report from the GemResearch Swisslab, stating that the 4.67 carat natural emerald is green color, originates from Ethiopia and clarity enhancement none, report no. GRS2021-017156, dated 7th January 2021

4.67 克拉長方形梯式切磨埃塞俄比亞天然祖母綠戒指，配以小鑽，鑲 18K 黃金，鑽石共重約 2.00 克拉，戒指尺寸 5¾，附 AGL 及 GRS 證書，編號 CS 1433，M. GÉRARD 設計

HK\$ 400,000 - 600,000 US\$ 50,000 - 75,000



2971

2971

A SAPPHIRE AND DIAMOND NECKLACE

Designed as a hinged choker, the front set with a detachable oval-cut sapphire, enhanced by a pavé-set brilliant-cut diamond triangular convex panel, mounted in 18K white and yellow gold, *sapphire weighing approximately 6.50 carats, diamonds weighing approximately 4.50 carats in total, length 38.00 cm*

藍寶石及鑽石項鍊，鑲 18K 白金及黃金，橢圓形藍寶石重約 6.50 克拉，鑽石共重約 4.50 克拉，項鍊長度 38.00 公分

HK\$ 72,000 - 90,000 US\$ 9,000 - 11,500



2972

The Property of A Lady

2972

AN EXTREMELY RARE RED BERYL AND DIAMOND RING, BY KAT FLORENCE

Set with a brilliant-cut red beryl weighing 1.41 carats, accented within an elegant surround of pavé-set diamond scalloped borders, to the two-tiered diamond-set three-quarter-hoop and bottom, mounted in 18K yellow gold, *signed KAT FLORENCE, with assay and maker's mark, includes original fitted box, ring size 6½*

Accompanied by a report from the Swiss Gemological Institute (SSEF), stating that the 1.41 carat natural red beryl is red color, originates from Utah, USA and has no indications of any treatment, report no. 84928, dated 30th March 2016

Accompanied by a report from the Gemological Institute of America, stating that the 1.42 carat natural red beryl is red color and has no indications of clarity enhancement, report no. 2155423235, dated 9th May 2013

Accompanied by a gemological report, stating that the approximately 1.42 carat natural beryl - bixbite is red color, report no. GF15090759, dated 11th September 2015

Red beryl is an extremely rare variety of beryl that comes in red color from trace amounts of iron and manganese. Red beryl is often known in the trade as "red emerald". With only three known locations in Utah, USA where red beryl can be found, the crystals mined from these locations are typically not gem quality, therefore it's not suitable for faceting. While only a modest amount of specimens get faceted as gems, red beryl is not treated by heating or irradiation as it could damage the stone.

1.41 克拉圓形改良明亮式切磨猶他州天然紅綠柱石及鑽石戒指，配以小鑽，鑲 18K 黃金，戒指尺寸 6½，附原盒，Kat Florence 設計，附 SSEF、GIA 及證書

HK\$ 70,000 - 90,000 US\$ 9,000 - 12,000





2973

2973

A DIAMOND NECKLACE/BRACELET, BY TIFFANY & CO.

Designed as an articulated V-shaped necklace, composed of five rows of brilliant-cut diamonds, joined to the detachable bracelet, mounted in 18K yellow gold, *diamonds weighing approximately 65.00 carats in total, signed TIFFANY & CO., necklace length 37.00 cm, bracelet length 17.50 cm*

鑽石項鍊/手鍊，鑲 18K 黃金，鑽石共重約 65.00 克拉，項鍊長度 37.00 公分及部份可拆除成手鍊，手鍊長度 17.50 公分，TIFFANY & CO. 設計

HK\$ 420,000 - 620,000 US\$ 53,000 - 78,000





2974

2974

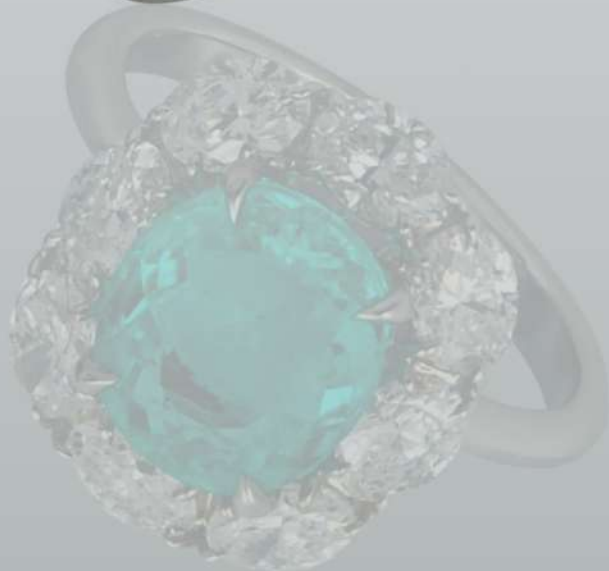
A PARAIBA TOURMALINE AND DIAMOND RING

Set with an oval-cut Paraiba tourmaline, enhanced by an oval-cut diamond surround, to the plain hoop, mounted in platinum and 18K white gold, *Paraiba tourmaline weighing approximately 3.44 carats, diamonds weighing approximately 1.85 carats in total, ring size 6¼*

Accompanied by a report from the Gemological Institute of America, stating that the approximately 3.44 carat natural Paraiba tourmaline is blue-green color and clarity enhanced, report no. 5353869897, dated 8th September 2020

約 3.44 克拉橢圓形改良明亮式切磨帕拉伊巴碧璽戒指，配以小鑽，鑲鉑金及 18K 白金，鑽石共重約 1.85 克拉，戒指尺寸 6¼，附 GIA 證書

HK\$ 120,000 - 180,000 US\$ 15,000 - 23,000





2975

2975

A CONCH PEARL AND DIAMOND PENDANT NECKLACE

Set with a conch pearl drop, enhanced by the stylized diamond-set bow, to the slender neckchain, mounted in 18K white gold, *conch pearl weighing approximately 20.50 carats, diamonds weighing approximately 1.35 carats in total, pendant length 3.30 cm, neckchain length 50.00 cm*

The historical CITES paperwork for this lot is not available and it will not be possible to obtain a CITES export permit to ship this item outside Hong Kong after the sale. Please refer to the IMPORTANT NOTICE at the back of this catalogue

海螺珍珠吊墜項鍊，配以小鑽，鑲鉑金及 18K 白金，海螺珍珠共重約 20.50 克拉，吊墜長度 3.30 公分，項鍊長度 50.00 公分

競投人留意此拍品無法提供過去的瀕危野生動植物種國際貿易公約之文件，表示此拍品將不能確保獲取出口香港的許可證，詳情請參閱本圖錄後頁之重要通知

HK\$ 100,000 - 150,000 US\$ 13,000 - 19,000





2976

2976

A PAIR OF DIAMOND EARRINGS

Each hoop set with three lines of brilliant-, marquise-, oval-, emerald- and asscher-cut diamonds, surmounted by the pear-shaped and marquise-cut diamond foliate, mounted in 18K white gold, *diamonds weighing approximately 22.60 carats in total, length 5.80 cm (2)*

鑽石耳環，鑲 18K 白金，鑽石共重約 22.60 克拉，耳環長度 5.80 公分

HK\$ 220,000 - 300,000 **US\$ 28,000 - 38,000**



2977

SIDE VIEW

The Property of A Lady

2977

A SAPPHIRE AND DIAMOND RING, BY KAT FLORENCE

The tapered bombé mount set atop with an oval-cut sapphire weighing 9.04 carats, the gallery pavé-set throughout with brilliant-cut diamond with pierced details and princess-cut accents, to the three-quarter-hoop, mounted in 18K white gold, *diamonds weighing approximately 1.50 carats in total, signed KAT FLORENCE, includes original fitted box, ring size 8*

Accompanied by a gemological report, stating that the 9.04 carat natural sapphire is blue color, originates from Nigeria and has no indications of heating/treatment, report no. 3266-6333, dated 25th February 2016

Accompanied by a gemological report, stating that the approximately 9.04 carat natural sapphire is blue color and has no indications of heating, report no. GF15101298, dated 20th October 2015

9.04 克拉橢圓形混合式切磨奈及利亞天然藍寶石及鑽石戒指，配以小鑽，鑲 18K 鉑金，尺寸 8，附原盒，Kat Florence 設計，附證書

HK\$ 80,000 - 120,000 US\$ 10,000 - 15,000



2978

2978

A RUBY AND DIAMOND RING

Centering upon an oval-cut ruby weighing 3.07 carats, accented by four oval-cut rubies weighing 3.70 carats in total, alternating with brilliant-cut diamonds, the reverse set with four pear-shaped diamonds weighing 0.19, 0.19, 0.18 and 0.18 carat respectively, to the diamond-set gallery and half-hoop, mounted in 18K white and yellow gold, *other diamonds weighing approximately 1.70 carats in total, ring size 6½*

Accompanied by a gemological report, stating that the total 6.77 carat natural rubies are red color (Royal Red), of vivid saturation and deep tone, originate from Mozambique and have no indications of heating/treatment, report no. 5356-6691, dated 29th September 2016

Accompanied by four gemological reports, stating that the 0.19, 0.19, 0.18 and 0.18 carat diamonds are E color and VVS2 clarity, with laser inscription registries, report nos. M2F39543, M2F39499, M2F39550 and M2F39587, dated 1st June 2013

Please refer to the department for the report details

橢圓形莫桑比克天然紅寶石戒指，配以小鑽，鑲 18K 白金及黃金，紅寶石共重約 6.77 克拉，鑽石共重約 2.44 克拉，戒指尺寸 6½，附證書，詳細資料請聯絡部門

HK\$ 200,000 - 300,000 US\$ 25,000 - 38,000





2979

2979

A PAIR OF COLORED DIAMOND AND DIAMOND EARRINGS

Each designed as a foliate cluster of marquise-cut and pear-shaped diamonds, highlighted by an oval-cut fancy yellow diamonds weighing 1.51 and 1.51 carats respectively, mounted in 18K white and yellow gold, *other diamonds weighing approximately 4.05 carats in total, length 2.10 cm (2)*

Accompanied by a report from the Gemological Institute of America, stating that the 1.51 carat diamond is fancy yellow, natural color and VVS2 clarity, with laser inscription registry, report no. 5191830016, dated 14th November 2018

Accompanied by a report from the Gemological Institute of America, stating that the 1.51 carat diamond is fancy yellow, natural color and VS2 clarity, with laser inscription registry, report no. 5191009259, dated 11th January 2018

1.51 克拉 VVS2 及 1.51 克拉 VS2 橢圓形改良明亮式切磨濃彩黃色彩色鑽石耳環，配以小鑽，鑲 18K 白金及黃金，鑽石共重約 4.05 克拉，耳環長度 2.10 公分，附 GIA 證書及鐳射刻印編號

HK\$ 220,000 - 350,000 US\$ 28,000 - 45,000



2980

2980
A DIAMOND NECKLACE

Designed as a series of articulated pear-shaped, marquise- and brilliant-cut diamond foliates, mounted in 18K white gold, *diamonds weighing approximately 34.40 carats in total, length 43.00 cm*

鑽石項鍊，鑲 18K 白金，鑽石共重約 34.40 克拉，項鍊長度 43.00 公分

HK\$ 300,000 - 400,000 US\$ 38,000 - 50,000



2981

2981

AN IMPORTANT COLORED DIAMOND AND DIAMOND RING

Centering upon a heart shaped fancy vivid yellowish orange diamond weighing 3.03 carats, within the pear-shaped diamond scalloped surround, to the plain hoop, mounted in 18K white gold, *other diamonds weighing approximately 1.25 carats in total, ring size 6½*

Accompanied by a report from the Gemological Institute of America, stating that the 3.03 carat diamond is fancy vivid yellowish orange, natural color and VS2 clarity, with laser inscription registry, report no. 2205889443, dated 20th February 2020

3.03 克拉心形改良明亮式切磨豔彩黃橙色 VS2 彩色鑽石戒指，配以小鑽，鑲 18K 白金，鑽石共重約 1.25 克拉，戒指尺寸 6½，附 GIA 證書及鐳射刻印編號

HK\$ 3,800,000 - 4,800,000 US\$ 475,000 - 600,000





2982



2983

2982

A PAIR OF DIAMOND EAR PENDANTS

Of cascade design, each ear pendant suspending five strands of slightly graduated brilliant-cut diamonds, mounted in 18K white gold, *diamonds weighing approximately 22.65 carats in total, length 7.90 cm (2)*

鑽石耳墜，鑲 18K 白金，鑽石共重約 22.65 克拉，耳墜長度 7.90 公分

HK\$ 120,000 - 180,000 US\$ 15,000 - 23,000

2983

A SAPPHIRE AND DIAMOND RING

Centering upon an oval-cut sapphire, flanked by old European-cut diamonds, to the millegrain-set circular-cut diamond mount and gallery with pierced details, extending to the trifurcated half hoop, mounted in platinum, *sapphire weighing approximately 1.50 carats, diamonds weighing approximately 1.00 carats in total, ring size 7¼*

Accompanied by a report from the American Gemological Laboratories, stating that the natural sapphire is blue color, originates from Kashmir, has no gemological evidence of heat and clarity enhancement none, report no. 1099130, dated 22nd March 2019

約 1.50 克拉橢圓形混合式切磨天然磨喀什米爾藍寶石戒指，配以小鑽，鑲鉑金，鑽石共重約 1.00 克拉，戒指尺寸 7¼，附 AGL 證書

HK\$ 200,000 - 300,000 US\$ 25,000 - 38,000



2984

2984

A COLORED DIAMOND AND DIAMOND BROOCH, BY GRAFF

Of floral design, the curling petals and pistils pavé-set throughout with brilliant-cut yellow hue and colorless diamonds, mounted in platinum and 18K yellow gold, *diamonds weighing approximately 12.00 carats in total, signed GRAFF, length 4.50 cm*

花形鑽石胸針，配以濃彩黃色彩色鑽石及小鑽，鑲鉑金及 18K 黃金，鑽石共重約 12.00 克拉，胸針長度 4.50 公分

HK\$ 180,000 - 250,000 US\$ 23,000 - 32,000



2985

2985

A VERY IMPORTANT PAIR OF COLORED DIAMOND AND DIAMOND EAR PENDANTS

Each suspending a pear-shaped light blue or light pink diamond weighing 6.29 and 5.10 carats respectively, within the colorless or pink hue brilliant-cut diamond surround, to the similarly-designed inverted surmount set with a pear-shaped diamond weighing 1.19 and 1.06 carats respectively, mounted in 18K white and rose gold, *length 3.00 cm (2)*

Accompanied by a report from the Gemological Institute of America, stating that the 6.29 carat diamond is light blue, natural color and VS2 clarity, with excellent polish and symmetry, with laser inscription registry, report no. 2201994907, dated 29th June 2020

Accompanied by a report from the Gemological Institute of America, stating that the 5.10 carat diamond is light pink, natural color and VVS1 clarity, with excellent polish and symmetry, with laser inscription registry, report no. 6214355334, dated 14th January 2021

Accompanied by a report from the Gemological Institute of America, stating that the 1.19 carat diamond is D color and VVS1 clarity, with excellent polish and symmetry, with laser inscription registry, report no. 6204736381, dated 13th December 2019

Accompanied by a report from the Gemological Institute of America, stating that the 1.06 carat diamond is D color and Internally Flawless clarity, with excellent polish and symmetry, with laser inscription registry and accompanied by a supplemental letter that the diamond has been determined to be Type Ia, report no. 2201811406, dated 9th January 2020.

6.29 克拉及 5.10 克拉梨形改良明亮式切磨淡藍色 VS2 及淡粉紅色 VVS1 彩色鑽石耳墜，配以 1.19 克拉 D 色 VVS1 及 1.06 克拉 D 色 IF 鑽石、Type Ia，(全部極優打磨及比例)，配以小鑽及彩色小鑽，鑲 18K 白金及粉紅金，耳墜長度 3.00 公分，附 GIA 證書、附錄及鐳射刻印編號

HK\$ 7,800,000 - 8,800,000 US\$ 975,000 - 1,100,000



INDEX OF MAKERS

MAKER	LOT
Adler	2933
Bulgari	2962
Cartier	2963
Chow Tai Fook	2941
Graff	2984
Kat Florence	2972, 2977
M. Gérard	2970
Mario Buccellati	2959
Nanis	2958
Tiffany & Co.	2961, 2973

INDEX OF COLORLESS DIAMONDS

COLOR	CLARITY	CARAT WEIGHT	CUT	LOT
D	VVS1, ExEx	1.19	Pear	2985
D	Internally Flawless, ExEx, Type Ia	1.06		
F	SI1	0.30	Heart	2947
F	SI1	0.30		
K	VS1	3.51	Square Emerald	2969

INDEX OF COLORED DIAMONDS

COLOR	CLARITY	CARAT WEIGHT	CUT	LOT
Light Blue	VS2,	6.29	Pear	2985
Light Pink	ExEx VVS1, ExEx	5.10		
Fancy Purplish Pink	SI2	0.59	Cut- Cornered Rectangular	2940
Fancy Light Pink	VS1	0.77	Heart	2946
Fancy Yellow	SI2	0.84		
Fancy Vivid Yellowish Orange	VS2	3.03	Heart	2981
Fancy Intense Yellow		5.04	Pear	2947
Fancy Intense Yellow	VVS2	0.59	Cushion	2945

Fancy Intense Yellow	Internally Flawless	0.56		
Fancy Yellow	VVS2	1.51		
Fancy Yellow	VS2	1.51	Oval	2979
Fancy Yellow-Brown	I1	3.28	Heart	2941

DIAMOND COLOR & CLARITY GRADING

COLOR SCALE FOR DIAMONDS (G.I.A.) 鑽石分級

D	E	F	G	H	I	J	K	L	M	N	O	P	Q	R	S	T	U	V	W	X	Y	Z
Colorless			Near Colorless			Faint			Very Light			Light										
無色			近乎無色			微黃			淡黃			淡黃色										

GRADING TERMS FOR FANCY-COLORED DIAMONDS (G.I.A.) 彩鑽等級

Fancy Vivid	Fancy Deep	Fancy Dark	Fancy Intense	Fancy	Fancy Light	Light	Very Light	Faint
豔彩	深彩	暗彩	濃彩	彩	淡彩	淡	很淡	微

CLARITY SCALE (G.I.A.) 淨度分級

F/IF	VS1	VS2	VS1	VS2	SI ₁	SI ₂	I ₁	I ₂	I ₃
Flawless/Internally Flawless	Very Very Slightly Included		Very Slightly Included		Slightly Included		Included		
內無瑕級	極輕微內含級		輕微內含級		微內含級		內含級		

HANDBAG STAMPS (HERMÈS)

A to R are encased in a square

1997 – A	2006 – J	2015 – T	□	alligator leather
1998 – B	2007 – K	2016 – X	••	Niloticus crocodile leather
1999 – C	2008 – L	2017 – A	^	Porosus crocodile leather
2000 – D	2009 – M		–	lizard leather
2001 – E	2010 – N		Horse shoe	custom piece
2002 – F	2011 – O			
2003 – G	2012 – P			
2004 – H	2013 – Q			
2005 – I	2014 – R			

RING SIZES

ENGLISH	METRIC	FRENCH / JAPANESE	AMERICAN
A	37.8252	-	$\frac{1}{2}$
A $\frac{1}{2}$	38.4237	-	$\frac{3}{4}$
B	39.0222	-	1
B $\frac{1}{2}$	39.6207	-	1 $\frac{1}{4}$
C	40.2192	-	1 $\frac{1}{2}$
C $\frac{1}{2}$	40.8177	-	1 $\frac{3}{4}$
D	41.4162	1	2
D $\frac{1}{2}$	42.0147	2	2 $\frac{1}{4}$
E	42.6132	-	2 $\frac{1}{2}$
E $\frac{1}{2}$	43.2117	3	2 $\frac{3}{4}$
F	43.8102	4	3
F $\frac{1}{2}$	44.4087	-	3 $\frac{1}{4}$
G	45.0072	5	3 $\frac{1}{4}$
G $\frac{1}{2}$	45.6057	-	3 $\frac{1}{2}$
H	46.2042	6	3 $\frac{3}{4}$
H $\frac{1}{2}$	46.8027	-	4
I	47.4012	7	4 $\frac{1}{4}$
I $\frac{1}{2}$	47.9997	8	4 $\frac{1}{2}$
J	48.5982	-	4 $\frac{3}{4}$
J $\frac{1}{2}$	49.1967	9	5
K	49.7952	10	5 $\frac{1}{4}$
K $\frac{1}{2}$	50.3937	-	5 $\frac{1}{2}$
L	50.9922	11	5 $\frac{3}{4}$
L $\frac{1}{2}$	51.5907	-	6
M	52.1892	12	6 $\frac{1}{4}$
M $\frac{1}{2}$	52.7877	13	6 $\frac{1}{2}$
N	53.4660	-	6 $\frac{3}{4}$
N $\frac{1}{2}$	54.1044	14	7
O	54.7428	15	7
O $\frac{1}{2}$	55.3812	-	7 $\frac{1}{4}$
P	56.0196	16	7 $\frac{1}{2}$
P $\frac{1}{2}$	56.6580	-	7 $\frac{3}{4}$
Q	57.2964	17	8
Q $\frac{1}{2}$	57.9348	18	8 $\frac{1}{4}$
R	58.5732	-	8 $\frac{1}{2}$
R $\frac{1}{2}$	59.2116	19	8 $\frac{3}{4}$
S	59.8500	20	9
S $\frac{1}{2}$	60.4884	-	9 $\frac{1}{4}$
T	61.1268	21	9 $\frac{1}{2}$
T $\frac{1}{2}$	61.7652	22	9 $\frac{3}{4}$
U	62.4026	-	10
U $\frac{1}{2}$	63.0420	23	10 $\frac{1}{4}$
V	63.6804	24	10 $\frac{1}{2}$
V $\frac{1}{2}$	64.3188	-	10 $\frac{3}{4}$
W	64.8774	25	11
W $\frac{1}{2}$	65.4759	-	11 $\frac{1}{4}$
X	66.0744	26	11 $\frac{1}{2}$
X $\frac{1}{2}$	66.6729	-	11 $\frac{3}{4}$
Y	67.2714	-	12
Y $\frac{1}{2}$	67.8699	-	12 $\frac{1}{4}$
Z	68.4684	-	12 $\frac{1}{2}$

IMPORTANT NOTICE

Please note that all lots are sold subject to our Conditions of Business for Buyers and Authenticity Guarantee, which are set forth at the back of the catalogue and Conditions of Business for Sellers, which are available from Luxeford offices on request. Prospective bidders should review the Conditions of Business, Authenticity Guarantee and the Guide for Prospective Buyers. Condition reports printed in the catalogue are intended as a guide only. Luxeford will be pleased to provide more detailed reports on any lot on request. Nevertheless, prospective buyers are reminded that all lots are sold as shown and their attention is drawn to Condition 3 of the Conditions of Business for Buyers printed in the catalogue.

IMPORTANT NOTICE REGARDING CONDITION OF ALL WATCHES

In the catalogue descriptions of property, significant damage may be mentioned, but all faults and imperfections may not be included. All dimensions in catalogue descriptions are approximate.

Prospective buyers should satisfy themselves by personal inspection as to the condition of each lot. If the prospective buyer is not able to inspect the piece, as a courtesy to our clients, we are pleased to provide an opinion of the condition of the property on request. However, since we are not professional watch restorers, any statement of opinion listed is purely subjective and is not a statement of fact. Condition reports may not specify all mechanical replacements or imperfections to the movement, case, dial, pendulum, separate base(s) or done. The absence of a condition report or the absence of a reference to damage in the catalogue does not imply that the lot is in good condition, working order or free from restoration or repair.

Watches in water-resistant cases have been opened to examine movements but no warranties are made that the watches are currently water-resistant.

Please note that we do not guarantee the authenticity of any individual component parts, such as wheels, hands, crowns, crystals, screws, bracelets and leather bands, since subsequent repairs and restoration work may have resulted in the replacement of original parts.

All lots are sold as is in accordance with Condition 3 of the Conditions of Business for Buyers, and we make no representation or warranty as to the condition of any lot sold.

Please be advised that bands made of materials derived from endangered or otherwise protected species (i.e. alligator and crocodile) are not sold with the watches and are for display purposes only. We reserve the right to remove these bands prior to shipping. Furthermore, in reference to bands, we do not guarantee the material of manufacture. Please be advised that the buyer will be responsible for complying with any applicable export and import matters, particularly in relation to endangered species and the United States Fish and Wildlife Service.

IMPORTANT NOTICE REGARDING IMPORTATION INTO THE UNITED STATES OF ROLEX WATCHES

Luxeford cannot arrange for the delivery of Rolex watches to the United States because U.S. laws restrict the import of Rolex watches. The buyer or a designated agent may collect the property in the country of sale.

***NOTICE REGARDING GEMSTONES ORIGINATING IN BURMA (MYANMAR)**

Jadeite and rubies of Burmese origin and articles of jewelry less than 100 years old containing such gemstones may not be imported into the U.S. Lots marked with contain rubies or jadeite of Burmese or unknown origin that may be subject to these restrictions.

With respect to items containing any other types of gemstones originating in Burma (e.g. sapphires), such items may be imported into the U.S. provided that the gemstones were mounted or incorporated into articles of jewelry outside of Burma as long as the setting is not of a temporary nature. Loose

gemstones of any type originating in Burma may not be imported into the U.S. The purchaser's inability to import any item into the U.S. or any other country as a result of these or other restrictions shall not justify cancellation or rescission of the sale or any delay in payment. Please check with the specialist department if you are uncertain as to whether a lot is subject to these import restrictions, or any other restrictions on importation or exportation.

ABSENCE OF GUARANTEE OF AUTHENTICITY

The artists' names recorded in the catalogue are not to be taken as unqualified attributions to the artists named. No unqualified attributions to any artist or date are made or intended. The current scholarship in the field of Chinese paintings does not permit unqualified statements as to authorship or date of execution. Therefore, none of the property in the catalogue is subject to any guarantee of authenticity and all of the property is sold "AS IS" in accordance with the Conditions of Business. Any reference to the Terms of Guarantee does not apply to this sale. Any assistance given by Luxeford staff to a buyer in selecting a purchase is given without prejudice to the above. Buyers are recommended to take independent professional advice on selection of purchases.

Notwithstanding the above, if within five years of the sale of any lot, the buyer gives written notice to Luxeford that the lot sold is a forgery and if within three months after giving such notice, the buyer returns the lot in the same Condition as it was at the time of sale to the premises of Luxeford and demonstrates to the satisfaction of Luxeford that the lot sold is a forgery, Luxeford is authorized to and will rescind the sale and refund the purchase price received by it. For this purpose a 'forgery' is defined as a work created with intent to deceive. See further Condition 3 of the Conditions of Business printed in the catalogue.

ALL DIMENSIONS WEIGHTS ARE APPROXIMATE CONDITION REPORTS

Luxeford's catalogues includes references to condition only in descriptions of multiple works (such as prints, books and wine). For all other property, no statement of condition is made and only alterations or replacement components are listed. Please contact the Specialist Department for a condition report on a particular lot. Condition reports are provided as a service to interested clients. Prospective buyers should note that descriptions of property are not warranties.

Certain weights in the catalogue and condition reports have been estimated through measurement. These figures are to be used as approximate guidelines and should not be relied upon as exact.

FOR JEWELRY

Terms used in the catalogue have the meanings ascribed to them below. Please note that all statements in the catalogue as to Authorship are made subject to the provisions of the CONDITIONS OF SALE and LIMITED WARRANTY.

Jewelers in the Title:

1. By Cartier

When maker's name appears in the titles, in Luxeford's opinion it is by that maker.

Jewelers beneath the description:

2. Signed Cartier

Has signature which in Luxeford's opinion is authentic.

3. With maker's mark for Cartier

Has a mark denoting a maker which in Luxeford's opinion is authentic

4. By Cartier

In Luxeford's opinion the object is by the jeweler although unsigned.

5. Mounted by Cartier

In Luxeford's opinion the setting has been created by the jeweler using stones originally supplied by the jeweler's client.

Periods:

- | | |
|-----------------|----------------|
| 1. Antique | Over 100 years |
| 2. Art Nouveau | 1895 - 1910 |
| 3. Belle Époque | 1895 – 1914 |
| 4. Art Deco | 1915 – 1935 |
| 5. Retro | 1940s |

Prospective buyers should note that period descriptions of property are for reference only and not warranties.

GUIDE FOR PROSPECTIVE BUYERS

Buying at Auction The following pages are designed to give you useful information on how to buy at auction. Luxeford staff as listed at the front of the catalogue will be happy to assist you. However, it is important that you read the following information carefully and note that Luxeford acts for the seller; you should refer in particular to Conditions 3 and 4 of the Conditions of Business for Buyers printed in the catalogue. Prospective bidders should also consult www.luxeford.com for the most up to date cataloguing of the property in the catalogue.

Provenance In certain circumstances, Luxeford may print in the catalogue the history of ownership of a work of art if such information contributes to scholarship or is otherwise well known and assists in distinguishing the work of art. However, the identity of the seller or previous owners may not be disclosed for a variety of reasons. For example, such information may be excluded to accommodate a seller's request for confidentiality or because the identity of prior owners is unknown given the age of the work of art.

Buyer's Premium A buyer's premium will be added to the hammer price and is payable by the buyer as part of the total purchase price. The buyer's premium is 20% of the first HK\$4,000,000 of the hammer price of each lot, plus 12% of any amount in excess of HK\$4,000,000.

1. BEFORE THE AUCTION

Catalogue Subscriptions If you would like to take out a catalogue subscription, please contact +852 2899 2128.

Pre-sale Estimates Pre-sale estimates are intended as a guide for prospective buyers. Any bid between the high and low pre-sale estimates would, in our opinion, offer a chance of success. However, all lots can realize prices above or below the pre-sale estimates. It is advisable to consult us nearer the time of sale as estimates can be subject to revision. The estimates printed in the auction catalogue do not include the buyer's premium.

Symbol Key The following key explains the symbols you may see inside the catalogue.

Regardless of the estimate of any lots, Luxeford reserves the right to request from prospective buyers to complete the pre-registration application form and to deliver to Luxeford a deposit of HK\$50,000 or such other higher amount as may be determined by Luxeford. Any financial references, guarantees and/or such other securities as Luxeford may require in its absolute discretion, as security for bids. If a client is not successful on bidding any lot, Luxeford will arrange for refund (subject to any rights of set off) of the deposit amount paid by such client without interest within 14 days from the date of sale. Any exchange losses or fees associated with the refund shall be borne by the client.

^ Top Lots

A Top Lot refers to all lots with the low estimate of HK\$8,000,000 or above. In order to bid on "Top Lots" (^ in print catalogue, ^ in eCatalogue), Luxeford may request from prospective bidders to complete the Pre-registration application form and to deliver to Luxeford a deposit of HK\$1,000,000 for each "Top Lot" or such other higher amount as may be determined by Luxeford and any financial references, guarantees and/or such

other security as Luxeford may require in its absolute discretion as security for the bid. If all lots in the catalogue are "Top Lots", a Special Notice will be included to this effect and this symbol will not be used.

No Reserve

Unless indicated by **red title**, all lots in the catalogue are offered subject to a reserve. A reserve is the confidential hammer price established between Luxeford and the seller and below which a lot will not be sold. The reserve is generally set at a percentage of the low estimate and will not exceed the low estimate for the lot. If all lots in the catalogue are offered without a reserve, a Special Notice will be included to this effect.

Condition of Lots Prospective buyers are encouraged to inspect the property at the presale exhibitions. Solely as a convenience, Luxeford may provide condition reports. The absence of reference to the condition of a lot in the catalogue description does not imply that the lot is free from faults or imperfections. Please refer to Condition 3 of the Conditions of Business for Buyers printed in the catalogue.

Electrical and Mechanical Goods All electrical and mechanical goods are sold on the basis of their decorative value only and should not be assumed to be operative. It is essential that prior to any intended use, the electrical system is checked and approved by a qualified electrician.

2. BIDDING IN THE SALE

Bidding at Auction Bids may be executed in person by paddle during the auction, in writing prior to the sale, by telephone. Auction speeds vary, but average between 50 and 120 lots per hour. The bidding steps are generally in increments of approximately 10% of the previous bid. Please refer to Conditions 5 and 6 of the Conditions of Business for Buyers printed in the catalogue.

Bidding in Person To bid in person, you will need to register for and collect a numbered paddle before the auction begins. Proof of identity will be required. If you wish to register to bid on a Premium Lot, please see the paragraph above. Should you be the successful buyer of a lot, please ensure that your paddle can be seen by the auctioneer and that it is your number that is called out. Should there be any doubts as to price or buyer, please draw the auctioneer's attention to it immediately. All lots sold will be invoiced to the name and address in which the paddle has been registered and cannot be transferred to other names and addresses. Please do not mislay your paddle; in the event of loss, inform the Sales Clerk immediately. At the end of the sale, please return your paddle to the registration desk.

Absentee Bids If you cannot attend the auction, we will be happy to execute written bids on your behalf. A bidding form can be found at the back of this catalogue. This service is free and confidential. Lots will always be bought as cheaply as is consistent with other bids, the reserves and Luxeford commissions. In the event of identical bids, the earliest received will take precedence. Always indicate a "top limit" - the hammer price to which you would bid if you were attending the auction yourself. "Buy" and unlimited bids will not be accepted. Please refer to Condition 5 of the Conditions of Business for Buyers printed in this catalogue. Telephoned absentee bids must be confirmed before the sale by letter or fax. Fax number for bids only: +852 2899 2730. To ensure a satisfactory service, please ensure that we receive your bids at least 24 hours before the sale.

Bidding by Telephone If you cannot attend the auction, it is possible to bid on the telephone. As the number of telephone lines is limited, it is necessary to make arrangements for this service 24 hours before the sale. We also suggest that you leave a **Safety bid** which we can execute on your behalf in the event we are unable to reach you by telephone. Multilingual staffs are available to execute bids for you. Please refer to Condition 5 of the Conditions of Business for Buyers printed in this catalogue.

Employee Bidding Luxeford employees may bid only if the employee

does not know the reserve and fully complies with Luxeford internal rules governing employee bidding.

3. THE AUCTION

Conditions of Business The auction is governed by the Conditions of Business for Sellers and Buyers and the Authenticity Guarantee. These apply to all aspects of the relationship between Luxeford and actual and prospective bidders and buyers. Anyone considering bidding in the auction should read them carefully. They may be amended by way of notices posted in the saleroom or by way of announcement made by the auctioneer.

Consecutive and Responsive Bidding The auctioneer may open the bidding on any lot by placing a bid on behalf of the seller. The auctioneer may further bid on behalf of the seller, up to the amount of the reserve, by placing consecutive or responsive bids for a lot. Please refer to Condition 6 of the Conditions of Business for Buyers printed in this catalogue.

4. AFTER THE AUCTION

Payment Payment is due in HK Dollars immediately 7 days after the sale and may be made by the following methods: Cash, Banker's Draft, Cheque, Wire Transfer and Credit Card (MasterCard, China Union Pay & Visa). It is against Luxeford general policy to accept single or multiple related payments in the form of cash or cash equivalents in excess of HK\$80,000. It is Luxeford policy to request any new clients or buyers preferring to make a cash payment to provide proof of identity (by providing some form of government issued identification containing a photograph, such as a passport, identity card or driver's license) and confirmation of permanent address. Thank you for your co-operation.

Cheques and drafts should be made payable to Luxeford Hong Kong Limited. Although personal and company cheques drawn in HK dollars on Hong Kong banks are accepted, you are advised that property will not be released until such cheques have cleared.

Bank transfers should be made to:

The Hongkong & Shanghai Banking Corp. Ltd

1 Queen's Road, Central, Hong Kong

Account name: Luxeford Hong Kong Limited

HKD Account No.: 848-202982-001

Bank Code: 004

Swift Code: HSBCHKHHHKH

Please include your name, Luxeford account number and invoice number with your instructions to your bank. All payment by transfer received by Luxeford must be the exact amount as shown on the invoice or any payment instructions issued by Luxeford. Clients are responsible for all bank charges relating to bank transfers. If you wish to pay for any purchase with your MasterCard, China Union Pay or Visa, you must present the card in person to Luxeford Hong Kong. All charges are subject to acceptance by Luxeford and by MasterCard, Union Pay or Visa, as the case may be. In the case a charge is not approved, you will nevertheless be liable to Luxeford for all sums incurred by you. Credit card purchases may not exceed HK\$1,000,000. Please note that Luxeford reserves the right to decline payments received from anyone other than the buyer of record and that clearance of such payments will be required. Additional 3% surcharge applies for all credit card payments, please contact our Accounts Department if you have any questions concerning clearance.

Collection and Storage All items from this sale not collected from Luxeford on the last day of the sale by 6:00pm will be sent back to Luxeford where they will incur storage charge one month after the date of the auction at the following rate:

Storage charge: HK\$800 per lot per month.

To arrange shipping or collection, please contact:

Sale Administrator / Shipping Administrator

As printed in front of this catalogue

Lots will be released to you or your authorized representative when full and final payment has been received by Luxeford, appropriate photographic identification has been made, and a release note has been provided by Luxeford (open Monday to Friday 9:00am - 6:00pm). Please refer to Condition 7 of the Condition of Business for Buyers printed in this catalogue.

Loss or Damage Buyers are reminded that Luxeford accepts liability for loss or damage to lots for a maximum period of thirty (30) calendar days after the date of the auction. Please refer to Condition 7 of the Conditions of Business for Buyers printed in this catalogue.

Shipping Luxeford Shipping Department can advise buyers on exporting and shipping property. Our office is open between the hours of 9:00am and 6:00pm and you can contact the Shipping Department. Purchases will be dispatched as soon as possible upon clearance from the Accounts department and receipt of your written dispatch instructions and of any export license or certificates that may be required. Dispatch will be arranged at the buyer's expense. Luxeford may receive a fee for its own account from the agent arranging the dispatch. Estimates and information on all methods can be provided upon request and enquiries should be marked for the attention of Luxeford Shipping Department and faxed to +852 2899 2730 our shipper will include a quote for transit insurance. All shipments should be unpacked and checked on delivery and any discrepancies notified to the transit insurer or shipper immediately.

Export The export of any lot from Hong Kong or import into any other country may be subject to one or more export or import licenses being granted. It is the buyer's responsibility to obtain any relevant export or import license. The denial of any license required or delay in obtaining such license cannot justify the cancellation of the sale or any delay in making payment of the total amount due. Luxeford, upon request and for an administrative fee, may apply for a license to export your lot(s) outside Hong Kong. Luxeford recommends that you retain all import and export papers, including licenses, as in certain countries you may be required to produce them to governmental authorities.

Endangered Species Items made of or incorporating plant or animal material, such as coral, crocodile, ivory, whalebone, tortoiseshell, etc., irrespective of age or value, may require a license or certificate prior to exportation and require additional licenses or certificates upon importation to any country outside Hong Kong. Please note that the ability to obtain an export license or certificate does not ensure the ability to obtain an import license or certificate in another country, and vice versa. For example, it is illegal to import elephant ivory under 100 years old into the United States. Luxeford suggests that buyers check with their own government regarding wildlife import requirements prior to placing a bid. It is the buyer's responsibility to obtain any export or import licenses and/or certificates as well as any other required documentation (please refer to Condition 10 of the Conditions of Business for Buyers printed in this catalogue).

5. ADDITIONAL SERVICES

Pre-sale Auction Estimates Luxeford will be pleased to give preliminary pre-sale auction estimates for your property. This service is free of charge and is available from Luxeford experts in Hong Kong on week days between 9.30am and 4.30pm. We advise you to make an appointment with the relevant expert department. Upon request, we may also travel to your home to provide preliminary pre-sale auction estimates.

Valuations The Valuation department provides written inventories and valuations for many purposes including insurance, probate and succession division, asset management and tax planning. Valuations can be tailored to suit most needs. Fees are highly competitive. For further information please contact the relevant Expert department on +852 2899 2128, Fax +852 2899 2730

CONDITIONS OF BUSINESS

The nature of the relationship between Luxeford, Sellers and Bidders and the terms on which Luxeford (as auctioneer) and Sellers contract with Bidders are set out below. Bidders' attention is specifically drawn to Conditions 3 and 4 below, which require them to investigate lots prior to bidding and which contain specific limitations and exclusions of the legal liability of Luxeford and Sellers. The limitations and exclusions relating to Luxeford are consistent with its role as auctioneer of large quantities of goods of a wide variety and Bidders should pay particular attention to these Conditions.

1. INTRODUCTION

(a) Luxeford and Sellers' contractual relationship with prospective Buyers is governed by:

- (i) these Conditions of Business;
- (ii) the Conditions of Business for Sellers displayed in the saleroom and which are available upon request from Luxeford Hong Kong salerooms or by telephoning +852 2899 2128;
- (iii) Luxeford Authenticity Guarantee as printed in the sale catalogue;
- (iv) any additional notices and terms printed in the sale catalogue, including the Guide for Prospective Buyers; and

(b) As auctioneer, Luxeford acts as agent for the Seller. A sale contract is made directly between the Seller and the Buyer. However, Luxeford may own a lot (and in such circumstances acts in a principal capacity as Seller) and/or may have a legal, beneficial or financial interest in a lot as a secured creditor or otherwise.

2. COMMON TERMS

In these Conditions of Business:

Bidder is any person considering, making or attempting to make a bid, by whatever means, and includes Buyers;

Buyer is the person who makes the highest bid or offer accepted by the auctioneer, and includes such person's principal when bidding as agent;

Buyer's Expenses are any costs or expenses due to Luxeford from the Buyer;

Buyer's Premium is the commission payable by the Buyer on the Hammer Price at the rates set out in the Guide for Prospective Buyers;

Counterfeit is as defined in Luxeford Authenticity Guarantee;

Hammer Price is the highest bid accepted by the auctioneer by the fall of the hammer, (in the case of wine, as apportioned pro-rata by reference to the number of separately identified items in that lot), or in the case of a post-auction sale, the agreed sale price;

Purchase Price is the Hammer Price and applicable Buyer's Premium;

Reserve is the (confidential) minimum Hammer Price at which the Seller has agreed to sell a lot;

Seller is the person offering a lot for sale (including their agent (other than Luxeford), executors or personal representatives);

Luxeford means Luxeford Hong Kong Limited, which has its registered office at Room 1810, 18F, Hutchison House, 10 Harcourt Road, Hong Kong.

Luxeford Company means Luxeford in Hong Kong and any of its subsidiaries (in each case 'subsidiary' having the meaning of Section 2 of the Companies Ordinance Cap.32).

3. DUTIES OF BIDDERS AND OF LUXEFORD IN RESPECT OF ITEMS FOR SALE

(a) Luxeford knowledge in relation to each lot is partially dependent on information provided to it by the Seller, and Luxeford is not able to and does not carry out exhaustive due diligence on each lot. Bidders acknowledge this fact and accept responsibility for carrying out inspections and investigations to satisfy themselves as to the lots in which they may be interested.

(b) Each lot offered for sale at Luxeford is available for inspection by Bidders prior to the sale. Luxeford accepts bids on lots solely on the basis that

Bidders (and independent experts on their behalf, to the extent appropriate given the nature and value of the lot and the Bidder's own expertise) have fully inspected the lot prior to bidding and have satisfied themselves as to both the condition of the lot and the accuracy of its description.

(c) Bidders acknowledge that many lots are of an age and type which means that they are not in perfect condition. All lots are offered for sale in the condition they are in at the time of the auction (whether or not Bidders are in attendance at the auction). Condition reports may be available to assist when inspecting lots. Catalogue descriptions and condition reports may on occasions make reference to particular imperfections of a lot, but Bidders should note that lots may have other faults not expressly referred to in this catalogue or condition report. Illustrations are for identification purposes only and will not convey full information as to the actual condition of lots.

(d) Information provided to Bidders in respect of any lot, including any estimate, whether written or oral and including information in any catalogue, condition or other report, commentary or valuation, is not a representation of fact but rather is a statement of opinion genuinely held by Luxeford. Any estimate may not be relied on as a prediction of the selling price or value of the lot and may be revised from time to time in Luxeford absolute discretion.

(e) No representations or warranties are made by Luxeford or the Seller as to whether any lot is subject to copyright or whether the Buyer acquires copyright in any lot.

(f) Subject to the matters referred to at 3(a) to 3(e) above and to the specific exclusions contained at Condition 4 below, Luxeford shall exercise such reasonable care when making express statements in catalogue descriptions or condition reports as is consistent with its role as auctioneer of lots in the sale to which these Conditions relate, and in the light of

(i) the information provided to it by the Seller;

(ii) scholarship and technical knowledge; and

(iii) the generally accepted opinions of relevant experts, in each case at the time any such express statement is made.

4. EXCLUSIONS AND LIMITATIONS OF LIABILITY TO BUYERS

(a) Luxeford shall refund the Purchase Price to the Buyer in circumstances where it deems that the lot is a Counterfeit and each of the conditions of the Authenticity Guarantee has been satisfied.

(b) In the light of the matters in Condition 3 above and subject to Conditions 4(a) and 4(e), neither any Luxeford Company nor the Seller:

(i) is liable for any errors or omissions in information provided to Bidders by Luxeford (or any Luxeford Company), whether orally or in writing, whether negligent or otherwise, except as set out in Condition 3(f) above;

(ii) gives any guarantee or warranty to Bidders and any implied warranties and conditions are excluded (save in so far as such obligations cannot be excluded by law) other than the express warranties given by the Seller to the Buyer in Condition 2 of the Sellers' Conditions of Business;

(iii) accepts responsibility to any Bidders in respect of acts or omissions (whether negligent or otherwise) by Luxeford in connection with the conduct of auctions or for any matter relating to the sale of any lot.

(c) Unless Luxeford owns a lot offered for sale, it is not responsible for any breach of these conditions by the Seller.

(d) Without prejudice to Condition 4(b), any claim against Luxeford or the Seller by a Bidder is limited to the Purchase Price with regard to that lot. Neither Luxeford nor the Seller shall under any circumstances be liable for any consequential losses.

(e) None of this Condition 4 shall exclude or limit Luxeford liability in respect of any fraudulent misrepresentation made by Luxeford or the Seller, or in respect of death or personal injury caused by the negligent acts or omissions of Luxeford or the Seller.

5. BIDDING AT AUCTION

(a) Luxeford has absolute discretion to refuse admission to the auction. Bidders must complete a Paddle Registration Form and supply such information and references as required by Luxeford. Bidders act as principal unless they have Luxeford prior written consent to bid as agent for another party. Bidders are personally liable for their bid and are jointly and severally liable with their principal if bidding as agent.

(b) Luxeford advises Bidders to attend the auction but will seek to carry out absentee written bids which are in Hong Kong dollars and, in Luxeford opinion, clear and received sufficiently in advance of the sale of the lot, endeavouring to ensure that the first received of identical written bids has priority.

(c) Where available, written, and telephone bids are offered as an additional service for no extra charge, at the Bidder's risk and shall be undertaken with reasonable care subject to Luxeford other commitments at the time of the auction; Luxeford therefore cannot accept liability for failure to place such bids save where such failure is unreasonable. Telephone bids may be recorded.

6. CONDUCT OF THE AUCTION

(a) Unless otherwise specified, all lots are offered subject to a Reserve, which shall be no higher than the low presale estimate at the time of the auction.

(b) The auctioneer has absolute discretion at any time to refuse or accept any bid, withdraw any lot, re-offer a lot for sale (including after the fall of the hammer), and take such other action as he reasonably thinks fit.

(c) The auctioneer will commence and advance the bidding at levels and in increments he considers appropriate and is entitled to place a bid or series of bids on behalf of the Seller up to the Reserve on the lot, without indicating he is doing so and whether or not other bids are placed.

(d) Subject to Condition 6(b), the contract between the Buyer and the Seller is concluded on the striking of the auctioneer's hammer, whereupon the Buyer becomes liable to pay the Purchase Price.

(e) Any post-auction sale of lots offered at auction shall incorporate these Conditions as if sold in the auction.

7. PAYMENT AND COLLECTION

(a) Unless otherwise agreed, payment of the Purchase Price for a lot and any Buyer's Expenses are due in Hong Kong dollars immediately 7 days on conclusion of the auction (the "Due Date") notwithstanding any requirements for export, import or other permits for such lot.

(b) Title in a purchased lot will not pass until Luxeford has received the Purchase Price and Buyer's Expenses for that lot in cleared funds. Luxeford is not obliged to release a lot to the Buyer until title in the lot has passed and appropriate identification has been provided, and any earlier release does not affect the passing of title or the Buyer's unconditional obligation to pay the Purchase Price and Buyer's Expenses.

(c) The Buyer is obliged to arrange collection of purchased lots no later than thirty (30) calendar days after the date of the auction. Purchased lots are at the Buyer's risk (and therefore their sole responsibility for insurance) from the earliest of

i) collection or

ii) the thirty-first calendar day after the auction. Until risk passes, Luxeford will compensate the Buyer for any loss or damage to the lot up to a maximum of the Purchase Price paid. Buyers should note that Luxeford assumption of liability for loss or damage is subject to the exclusions set out in Condition 6 of the Conditions of Business for Sellers.

8. REMEDIES FOR NON-PAYMENT

Without prejudice to any rights the Seller may have, if the Buyer without prior agreement fails to make payment in full for the lot within 7 days of the auction, or in accordance with any payment schedule agreed with Luxeford,

Luxeford may in its sole discretion (having informed the Seller) exercise one or more of the following remedies:

(a) store the lot at its premises or elsewhere at the Buyer's sole risk and expense;

(b) terminate the contract of the sale of the lot, retaining the right to damages for the Buyer's breach of contract;

(c) set off any amounts owed to the Buyer by a Luxeford Company against any amounts owed to Luxeford by the Buyer in respect of the lot and/or any shortfall in the Purchase Price and Buyer's Expenses in the event of a resale under Condition 8(h) below (on a pro-rata basis where more than one lot is purchased by the Buyer at the auction and is then resold), and/or any claim by Luxeford against the Buyer for damages for the Buyer's breach of contract (including but not limited to the Buyer's Premium in the event of a termination of the sale contract);

(d) apply as Luxeford sees fit any payments, including deposits, made by or on behalf of the Buyer in respect of this transaction or otherwise, towards

(i) any costs, Buyer's Expenses or debts owed by the Buyer to any Luxeford Company, and/or (ii) any shortfall in the Purchase Price and Buyer's Expenses in the event of a resale under Condition 8(h) below (on a pro-rata basis where more than one lot is purchased by the Buyer at the auction and is then resold), and/or (iii) any claim by Luxeford against the Buyer for damages for the Buyer's breach of contract (including but not limited to the Buyer's Premium in the event of a termination of the sale contract). For the avoidance of doubt, if more than one lot is purchased by the Buyer at the auction and the Buyer makes a partial payment but fails to pay in full the Purchase Price of all lots purchased by him within five days of the auction or in accordance with any payment schedule agreed with Luxeford, Luxeford is entitled, at its absolute discretion, to reject any instruction or request that the whole or a part of such partial payment be applied towards the Purchase Price of, and/or the shortfall and/or Luxeford claim for damages in respect of, any particular lot(s) purchased by the Buyer;

(e) reject future bids from the Buyer or render such bids subject to payment of a deposit, such deposit to be applied at Luxeford discretion in the event of subsequent non-payment or late payment;

(f) charge interest at a rate not exceeding 2% per month from the Due Date to the date the Purchase Price and relevant Buyer's Expenses are received in cleared funds;

(g) exercise a lien over any of the Buyer's property which is in the possession of a Luxeford Company. Luxeford shall inform the Buyer of the exercise of any such lien and within 14 days of such notice may arrange the sale of such property and apply the proceeds to the amount owed to Luxeford, and/or any shortfall in the Purchase Price and Buyer's Expenses in the event of a resale under Condition 8(h) below (on a pro-rata basis where more than one lot is purchased by the Buyer at the auction and is then resold), and/or any claim by Luxeford against the Buyer for damages for the Buyer's breach of contract (including but not limited to the Buyer's Premium in the event of a termination of the sale contract);

(h) resell the lot by auction or private sale, with estimates and reserves at Luxeford discretion. In the event such resale is for less than the Purchase Price and Buyer's Expenses for that lot, the Buyer will remain liable for the shortfall together with all costs incurred in such resale;

(i) commence legal proceedings to recover the Purchase Price and Buyer's Expenses for that lot, or to claim damages for the Buyer's breach of contract, together with interest and the costs of such proceedings on a full indemnity basis; or

(j) release the name and address of the Buyer to the Seller to enable the Seller to commence legal proceedings to recover the amounts due or claim damages for the Buyer's breach of contract and legal costs. Luxeford will

take reasonable steps to notify the Buyer prior to releasing such details to the Seller.

9. FAILURE TO COLLECT PURCHASES

(a) If the Buyer pays the Purchase Price and Buyer's Expenses but fails to collect a purchased lot within thirty calendar days of the auction, the lot will be stored at the Buyer's expense (and risk) at Luxeford or with a third party.

(b) If a purchased lot is paid for but not collected within six months of the auction, the Buyer authorizes Luxeford, having given notice to the Buyer, to arrange a resale of the item by auction or private sale, with estimates and reserves at Luxeford discretion. The proceeds of such sale, less all costs incurred by Luxeford, will be forfeited unless collected by the Buyer within two years of the original auction.

10. EXPORT AND PERMITS

It is the Buyer's sole responsibility to identify and obtain any necessary export, import, firearm, endangered species or other permit for the lot and to complete any required export or import manifest, list or documentation. Any symbols or notices in the sale catalogue reflect Luxeford reasonable opinion at the time of cataloguing and offer Bidders general guidance only. Without prejudice to Conditions 3 and 4 above, Luxeford and the Seller make no representations or warranties as to whether any lot is or is not subject to export or import restrictions or any embargoes.

The denial of any permit or license shall not justify cancellation or rescission of the sale contract or any delay in payment. We shall not be responsible for any liability arising from any failure to complete or submit the required export or import manifest, list or documentation.

11. GENERAL

(a) All images and other materials produced for the auction are the copyright of Luxeford, for use at Luxeford discretion.

(b) Notices to Luxeford should be in writing and addressed to the department in charge of the sale, quoting the reference number specified at the beginning of the sale catalogue. Notices to Luxeford clients shall be addressed to the last address formally notified by them to Luxeford.

(c) Should any provision of these Conditions of Business be held unenforceable for any reason, the remaining provisions shall remain in full force and effect.

(d) These Conditions of Business are not assignable by any Buyer without Luxeford prior written consent, but are binding on Buyers' successors, assigns and representatives. No act, omission or delay by Luxeford shall be deemed a waiver or release of any of its rights.

(e) The materials listed in Condition 1(a) above set out the entire agreement and understanding between the parties with respect to the subject matter hereof. It is agreed that, save in respect of liability for fraudulent misrepresentation, no party has entered into any contract pursuant to these terms in reliance on any representation, warranty or undertaking which is not expressly referred to in such materials.

12. DATA PROTECTION

In connection with the management and operation of our business and the marketing and supply of Luxeford Companies' services, or as required by law, we may ask clients to provide personal information about themselves or obtain information about clients from third parties (e.g. credit information). If clients provide Luxeford with information that is defined by law as "sensitive", they agree that Luxeford Companies may use it for the above purposes. Luxeford Companies will not use or process sensitive information for any other purpose without the client's express consent. If you would like further information on Luxeford policies on personal data, or to make corrections to your information, please contact us on +852 2899 2128.

If you would prefer not to receive details of future events please tick here. In order to fulfill the services clients have requested, Luxeford may disclose

information to third parties (e.g. shippers). Some countries do not offer equivalent legal protection of personal information to that offered within Hong Kong. It is Luxeford policy to require that any such third parties respect the privacy and confidentiality of our clients' information and provide the same level of protection for clients' information as provided within Hong Kong, whether or not they are located in a country that offers equivalent legal protection of personal information. By agreeing to these Conditions of Business, clients agree to such disclosure. Clients will please note that for security purposes, Luxeford premises are subject to video recording. Telephone calls e.g. telephone voicemail messages may also be recorded.

13. LAW AND JURISDICTION

Governing Law These Conditions of Business and all aspects of all matters, transactions or disputes to which they relate or apply shall be governed by and interpreted in accordance with Hong Kong law.

Jurisdiction For the benefit of Luxeford, all Bidders and Sellers agree that the Hong Kong Courts are to have exclusive jurisdiction to settle all disputes arising in connection with all aspects of all matters or transactions to which these Conditions of Business relate or apply. All parties agree that Luxeford shall retain the right to bring proceedings in any court other than the Hong Kong Courts.

Service of Process All Bidders and Sellers irrevocably consent to service of process or any other documents in connection with proceedings in any court by facsimile transmission, personal service, delivery by mail or in any other manner permitted by Hong Kong law, the law of the place of service or the law of the jurisdiction where proceedings are instituted, at the last address of the Buyer or Seller known to Luxeford or any other usual address.

General Authenticity Guarantee:

If Luxeford sells an item which subsequently is shown to be a "counterfeit", subject to the terms below Luxeford will set aside the sale and refund to the Buyer the total amount paid by the Buyer to Luxeford for the item, in the currency of the original sale. For these purposes, "counterfeit" means a lot that in Luxeford reasonable opinion is an imitation created to deceive as to authorship, origin, date, age, period, culture or source, where the correct description of such matters is not reflected by the description in this catalogue (taking into account any Glossary of Terms). No lot shall be considered a counterfeit by reason only of any damage and/or restoration and/or modification work of any kind (including repainting or over-painting). Please note that this Guarantee does not apply if either:-

- (i) the catalogue description was in accordance with the generally accepted opinions of scholar(s) and expert(s) at the date of the sale, or the catalogue description indicated that there was a conflict of such opinions; or
- (ii) the only method of establishing at the date of the sale that the item was a counterfeit would have been by means of processes not then generally available or accepted, unreasonably expensive or impractical to use; or likely to have caused damage to the lot or likely (in Luxeford reasonable opinion) to have caused loss of value to the lot; or
- (iii) there has been no material loss in value of the lot from its value had it been in accordance with its description.

This Guarantee is provided for a period of five (5) years after the date of the relevant auction, is solely for the benefit of the Buyer and may not be transferred to any third party. To be able to claim under this Guarantee, the Buyer must:-

- (i) notify Luxeford in writing within three (3) months of receiving any information that causes the Buyer to question the authenticity or attribution of the item, specifying the lot number, date of the auction at which it was purchased and the reasons why it is thought to be counterfeit; and
- (ii) return the item to Luxeford in the same condition as at the date of sale to the Buyer and be able to transfer good title in the item, free from any third

party claims arising after the date of the sale.

Luxeford has discretion to waive any of the above requirements. Luxeford may require the Buyer to obtain at the Buyer's cost the reports of two independent and recognized experts in the field, mutually acceptable to Luxeford and the Buyer. Luxeford shall not be bound by any reports produced by the Buyer, and reserves the right to seek additional expert advice at its own expense. In the event Luxeford decides to rescind the sale under this Guarantee, it may refund to the Buyer the reasonable costs of up to two mutually approved independent expert reports.

GUIDE FOR ABSENTEE BIDDERS ABSENTEE BIDS

If you are unable to attend an auction in person, and wish to place bids, you may give Luxeford Bid Department instructions to bid on your behalf. We will then try to purchase the lot or lots of your choice for the lowest price possible, and never for more than the top amount you indicate. This service is free and confidential. Please note: Luxeford offers this service as a convenience to clients who are unable to attend the sale, and although we will make every effort, Luxeford will not be responsible for error or failure to execute bids. Absentee bids, when placed by telephone, are accepted only at the caller's risk and must be confirmed by letter, or fax. Fax number for bids only: +852 2899 2730.

USING THE ABSENTEE BIDS

Please use the absentee bid form provided and be sure to record accurately the lot numbers and descriptions and the top hammer price you are willing to pay for each lot. "Buy" or unlimited bids will not be accepted. Alternative bids can be placed by using the word "OR" between lot numbers. Bids must be placed in the same order as the lot numbers appear in this catalogue. Each absentee bid form should contain bids for one sale only; the sale number and

code name should appear at the top of the form. Please place your bids as early as possible. In the event of identical bids, the earliest received will take precedence. Where appropriate your bids will be rounded down to the nearest amount consistent with the Auctioneer's bidding increments.

SUCCESSFUL BIDS

Successful bidders will receive an invoice detailing their purchases and giving instructions for payment and clearance of goods. Unsuccessful absentee bidders will be advised.

DATA PROTECTION

In connection with the management and operation of our business and the marketing and supply of Luxeford Companies' services, or as required by law, we may ask clients to provide personal information about themselves or obtain information about clients from third parties (e.g. credit information). Luxeford Companies will not use or process sensitive information for any other purpose without the client's express consent. In order to fulfill the services clients have requested, Luxeford may disclose information to third parties (e.g. shippers). Some countries do not offer equivalent legal protection of personal information to that offered within Hong Kong. It is Luxeford policy to require that any such third parties respect the privacy and confidentiality of our clients' information and provide the same level of protection for clients' information as provided within Hong Kong, whether or not they are located in a country that offers equivalent legal protection of personal information. By signing this Absentee Bid Form you agree to such disclosure.

重要通知

請注意所有拍賣品皆受制於目錄後給買家業務規則及保證書，以及可於利得豐辦事處索取給賣家業務規則。如有要求的話利得豐樂意提供任何物品之詳細報告。無論如何，請準買家注意所有物品皆以出示的狀況出售及注意給買家業務規則交易條款3。

有關勞力士手錶進口至美國的重要通知由於美國法例限制進口勞力士手錶，故利得豐無法安排付運勞力士手錶至美國。買家或其指定代理可於銷售國家取得有關物品。

*有關源自緬甸的寶石

源自緬甸的翡翠及紅寶石，以及含有該等寶石而少於100 年的珠寶產品可能不能進口至美國。附有的拍賣品含有來源地不明的紅寶石或翡翠而可能受有關限制所規限。

至於含有源自緬甸的任何其他類別寶石（例如藍寶石）的物品，倘若寶石乃於緬甸境外鑲嵌或鑲鑄在珠寶產品上，而該鑲嵌並非臨時性質，則有關產品可能可進口至美。源自緬甸的任何類別碎石可能不可進口至美國。買家即使因該等或其他限制而無法將任何物品進口至美國或任何其他國家，亦不得因此而取消或撤銷該買賣或延遲付款。如閣下不確定物品是否受該等進口限制或任何其他進出口限制所規限，務請查詢專家部門。目錄所載藝術家之名字不可被視為無條件地歸屬於所提及之藝術家，亦無作出、或意圖作出對任何日期或藝術家無條件的屬性。現今中國字畫之研究並不容許對作者或作品完成日期之無條件聲明。因此，此目錄內的所有物品皆不受制於任何真實性之擔保及所有物品均根據交易條款以「實在情況」出售。任何擔保條款皆不適用於此拍賣。利得豐僱員給予買家有關選購之協助將不損以上條文之效用。買家應索取對選購之獨立專業意見。不論上文如何，若買家於物品出售后5 年內以書面通知利得豐該出售物品為偽造物及在該通知發出3 個月內，買家將物品以出售時之狀況歸還利得豐辦公室及證明至利得豐滿意為止該出售品為偽造時，利得豐有權並會撤銷該交易並將已收的購入價退回。「偽造物」在本文指蓄意欺騙之目的而創造之作品。請參閱交易條款3。

所有量度及重量皆為約數

狀況報告

利得豐目錄只會於多類型作品(如印刷品、書本及酒) 的描述中提及狀況事宜。至於其他所有拍賣品，除列明重整或替換部分外，均無其他狀況聲明。如欲索取某拍賣品的狀況報告，請與專家聯絡。

狀況報告乃利得豐向客戶提供的項服務。準買家應注意每項拍賣品均以現狀出售，拍賣品的描述並不可作保證。

在目錄中有一些重量是經由量度而約計出，此數據只可作指引並不可當作為準確的重量。

珠寶

此目錄所使用之詞彙均按下列所述之定義。請注意，此目錄內一切有關來源或出處的陳述，均根據「業務規定」及「有限保證」之條款。

拍賣品標題中的珠寶商名稱

1. By Cartier

若製造商之名稱出現於拍賣品標題，則表示根據利得豐專家的意見，此件拍賣品為該珠寶商所製造。

拍賣品描述下方所提及的珠寶商名稱

2. Signed Cartier

根據利得豐專家的意見，拍賣品上的簽字是正式和真確的。

3. With maker's mark for Cartier

根據利得豐專家的意見，拍賣品上的生產商標是真確的。

4. By Cartier

雖然拍賣品上沒有簽字，但根據利得豐專家的意見，當屬該珠寶商之產品。

5. Mounted by Cartier

根據利得豐專家的意見，該拍賣品是經由珠寶商採用其客戶所提供之寶石鑲嵌而成。

時期

1.	Antique	100年以上
2.	Art Nouveau	1895 - 1910
3.	Belle Époque	1895 - 1914
4.	Art Deco	1915 - 1935
5.	Retro	1940年代

準買家請注意每項拍賣品的時期描述只供參考並不可作保證。

給準買家之指引

於拍賣會上購買 下文旨在給予閣下有關如何在拍賣會上購買之實用資料。於圖錄前部份所列之利得豐職員將樂意協助閣下。然而，閣下務須詳閱下列資料，並須注意利得豐乃為賣方行事；閣下尤其應省閱載於圖錄之業務規則第3 條及第4 條。準買家應參閱www.luxeford.com 有關圖錄的拍賣品之最新資料。

展品之出處 在某些情況下，若展品出處之資料擁有學術價值或是為人熟悉且能協助鑑別該展品，「利得豐」會在圖錄內刊印有關資料。但基於不同理由，賣方或上手物主之身份或不會被揭露，如因應賣方要求將其身份保密或因展品年代遠以致上手物主之身份不詳等。

買家支付之酬金 買家應支付本公司酬金。拍賣品「成交價」為4,000,000 港元及以下，酬金以「成交價」之20%計算；超過4,000,000 港元之部份，則以12%計算。

1. 拍賣前

訂閱圖錄 閣下如欲訂閱圖錄，請致電+852 2899 2128。

拍賣前估價 拍賣前估價用意在於為準買家提供指引。本公司認為，介乎拍賣前高位與低位估價間之任何競投價均有成功機會。然而，所有拍賣品之價格可能高於或低於拍賣前估價。由於估價可予修改，因此閣下應在臨近拍賣時諮詢本公司。拍賣圖錄所載之估價並不包括買家支付之酬金。本公司要求競投客戶完成預先登記程序及交付利得豐港幣50,000 元或其他更大金額的訂金及任何財務狀況證明，擔保或/及其他由利得豐可全權酌情決定要求的抵押作為參加利得豐競投的保障。若客戶未能成功競投，本公司將於拍賣會完成后14天內將訂金(不計任何利息)退回客戶，本公司將不會付責任何利息、滙率、銀行或其他任何收費。

符號表示

以下為圖錄所載符號之說明：

^ 高額拍賣品

高額拍賣品即拍賣底價為港幣8,000,000元或以上的拍賣品。利得豐可要求競投高額拍賣品(在目錄內標有^符號或網上目錄內標有^符號)的準競投人完成預先登記程序及為每件高額拍賣品交付利得豐港幣1,000,000 元或其他更大金額的訂金及任何財務狀況證明，擔保或/及其他由利得豐可全權酌情決定要求的抵押作為參加利得豐競投的保障。若在同一目錄中所有拍賣品均為高額拍賣品，則會就此作出特別通知而不會使用此符號。

無底價

除以紅色標題作註明外，所有在圖錄之拍賣品均有底價。底價是由利得豐和賣家共同設定之成交價位，且絕對機密。拍賣品不會以低於該價售出。底價通常以低位估價之一定比例來設定，且拍賣品不會以低於該價位之售價成交。圖錄中之拍賣品如不設底價。若在同一圖錄中之所有拍賣品均並非以底價出售，則會就此作出特別提示。

拍賣品之狀況 準買家應於拍賣前之展覽會上視察拍賣品。純為方便買家，利得豐亦會提供拍賣品狀況報告。如圖錄中未說明拍賣品之狀況，不表示該拍賣品沒有缺陷或瑕疵。請參閱印於圖錄之買家業務規則第3條。

電器及機械貨品 所有電器及機械貨品只按其裝飾價值出售，不應假設其可運作。電器在作任何用途前必須經合格電器技師檢驗和批核。

2. 拍賣之競投

在拍賣會中競投 競投可以由個人親臨拍賣會上舉板進行，亦可在拍賣前以書面形式參加或通過電話競投服務進行競投。拍賣過程需時各有不同，但平均為每小時50至120件拍賣品。每次出價通常較前一次出價高約10%。請參閱印於圖錄之買家業務規則第5及6條。

親身競投 親身競投之人士須在拍賣會開始前登記及領取號碼板，並須出示身份證明件。如閣下希望登記競投高估價拍賣品，請參考上述段落。如閣下成功購得拍賣品，請確定拍賣官看到閣下之號碼板及叫出閣下之號碼。如對叫價或買家有任何疑問，請立即向拍賣官示意。所有售出之拍賣品發票抬頭人均會為登記號碼板之人士及其地址，而不得轉讓至他人及其他地址。請勿隨意放置閣下之號碼板；如有遺失，立即通知拍賣主任。拍賣完結時，請將號碼板交回登記席。

書面競投 如閣下未能出席拍賣會，本公司樂意代表閣下進行書面競投。圖錄後部分附有競投表格。此服務乃免費而且保密。拍賣品將會以相對於其他競投價、底價及利得豐委託標之最相宜價格得。倘競投價相同，則最先競投者有優先權。請每一次均列明「最高限價」一即閣下如親身出席拍賣會將會作出之成交價。「購買」和無限價競投標將不獲接納。請參閱圖錄所載之買家業務規則第5條。

電話競投者必須於拍賣前以函件或傳真確認。競投傳真專線號碼為：+852 2899 2730。為確保獲得滿意之服務，利得豐建議客戶填寫**保障競投**金額，並請確保本公司在拍賣前最少24小時收到閣下確認競投之指示。

僱員競投 利得豐之僱員只可在不知底價及全面遵守利得豐監管僱員競投之內部規例之情況下於利得豐拍賣會上競投。

3. 拍賣

業務規則 拍賣會受賣方及買家業務規則及真實性保證所規限。該等業務規則及保證適用於利得豐與實際或準競投者及準買家之間之各方面的關係。任何考慮於拍賣會競投之人士，務須詳閱該等業務規則及保證。該等業務規則及保證可經在拍賣會場張貼通告或由拍賣官作出公佈之方式進行修改。

接連投標及競投 拍賣官可代表賣家為任何拍賣品叫第一口價以開始競投。拍賣官更可代表賣家以接連投標或競投之方式，就拍賣品作出競投直至達到底價。請參閱載於圖錄之買家業務規則第6條。

4. 拍賣後

付款 拍賣後須即時以下列方法以港元付款：現金、銀行匯票、支票、電匯、信用卡（MasterCard, China Union Pay & Visa）。利得豐之一般政策是不會以現金或現金等值形式接納逾80,000港元之一項或多項相關付款。利得豐之政策是要求選擇以現金付款之任何新客戶或買家提供身份證明（通過出示帶有照片並由政府發出之證明，如護照、身份證或駕駛執照）並確認固定地址。多謝合作。支票及匯票請以利得豐香港有限公司為抬頭人。雖然以香港銀行港元開出之個人及公司支票均獲接納，惟敬請留意，本公司須待支票兌現後方會將閣下所購得之物品交付。

銀行轉賬須存入以下戶口：

香港上海滙豐銀行有限公司

香港, 中環, 皇后大道中1號

賬戶名稱: Luxeford Hong Kong Limited

港元賬戶號碼: 848-202982-001

銀行編號: 004

Swift Code: HSBCHKHHHKH

閣下向銀行發出指示時請附上閣下之名稱、利得豐之賬戶號碼及發票號碼。請注意閣下需付擔所有滙款及所有相關之銀行費用。

若以信用卡（MasterCard, China Union Pay & Visa）結賬，請親身持咭到本公司付款。本公司及信用卡公司保留是否接納該等付款之權利。如該等付款不被接納或撤回，閣下仍須承擔付款責任。信用卡付款之上限為1,000,000港元，本公司對所有信用卡付款收取3%的附加費。請注意除記錄上的買家之外，利得豐有權拒絕接納任何其他人士之付款，而此等付款須先經過帳。如閣下就有關付款過帳有任何問題，請聯絡本公司之會計部。

收取及儲存貨品 是次拍賣，未獲領取的拍賣品將會於該季拍賣中最後一天下午六時後送回利得豐，而由拍賣後一個月起，閣下須支付儲存費，儲存費以下列計算：**儲存費：每件每月港幣800元**。如欲安排付運或收取貨品，請聯絡：**行政助理 / 運輸助理**列印於圖錄之前部份。利得豐收到全數結清之貨款、附有相片之身份證明文件，及利得豐提供之領貨單，會將拍賣品交付予閣下或閣下所授權之代表。（辦公時間為星期一至五上午九時至下午六時）請預先致電以節省等候時間。請參閱載於圖錄之買家業務規則第7條。

損失或損壞 買家應注意，利得豐對拍賣品損失或損壞之責任期限最多為及至拍賣後三十(30)天。請參閱載於圖錄之買家業務規則第7條。

付運 利得豐裝運部可就拍賣品之出口及付運向買家提供意見。辦事處之辦公時間為上午九時至下午六時，閣下可聯絡裝運部。已購物品將於會計部收到結清貨款後及取得閣下之書面付運指示及任何出口許可證或可能需要之證書後儘快付運。付運所需費用概由買家支付。利得豐可從安排付運之代理人收取費用。如有要求，利得豐可提供報價及所有運送方式之資料。如有垂詢，請聯絡利得豐裝運部，並傳真至（852）2899 2730。閣下之承運人將對運送保險作出報價。所有付運貨品交貨之時應打開包裝檢查，如有任何不符之處，請立即通知運送保險商或承運人。

出口 任何拍賣品都可能需要一或多個許可證方可自香港出口或由其他國家進口。買家須負責取得任何有關之進出口許可證。即使未能取得任何許可證或延遲取得該許可證，均不能構成取消成交或任何延遲支付到期應付總額之理由。利得豐可應要求申領牌照，將閣下之拍賣品出口至香港境外，惟會就此收取行政費用。利得豐建議閣下保留所有進出口文件（包括許可證），在某些國家閣下可能須向政府當局出示此類文件。

瀕危物種 由植物或動物材料（如珊瑚、鱷魚、象牙、鯨骨、玳瑁等）製成或含有植物或動物材料之物品，不論其年份或價值，均可能須申領許可證或證書方可出口至香港境外，且由香港境外國家進口時可能須申領其他許可證或證書。務請注意，能取得出口許可證或證書並不能確保可在另一國家取得出口許可證或證書，反之亦然。例如，將歷史不足100年之象牙進口至美國即屬非法。利得豐建議買家向相關政府查核有關野生動植物進口之規定後再參與競投。買家須負責取得任何出口或進口許可證及／或證書，以及任何其他所需文件（請參閱載於圖錄之買家業務規則第10條）。

5. 其他服務

拍賣前估價 利得豐樂意為閣下之物品提供拍賣前初步估價，此項免費服務由香港利得豐之專家提供，服務時間為週一至五上午九時三十分至下午四時三十分。本公司建議閣下與有關之專家部門作預約。如有所要求，本公司更會到府上為閣下之物品提供拍賣前初步估價。

估值 估值部門就保險、遺囑認證及承繼權劃分、資產管理及稅務方案需要提供物品之書面清單及估值。估值費用相宜，可因應不同要求而作出，並能切合大部份需要。如欲索取更多資料，請與有關之專家部門聯絡，電話號碼 +852 2899 2128，傳真號碼為：+852 2899 2730。

利得豐之香港業務規則

買家之業務規則

利得豐、賣家及競投人之關係性質及利得豐（作為拍賣官）及賣家與競投人所訂立合約之條款於下文載列。競投人務請細閱下文規則第3 及4 條，該兩條要求競投人在投標前檢查拍賣品，並闡述了利得豐及賣家之法律責任之具體限制及豁免。有關利得豐所持有之限制及豁免符合其作為大量不同種類貨品拍賣官之身份，競投人應特別注意該等規則。

1. 序言

(a) 利得豐及賣家與準買家之合約關係受下

列各項規管：

(i) 本業務規則；

(ii) 賣家在銷售處展示之業務規則（可於利得豐之香港銷售處或致電 +852 2899 2128 索取）；

(iii) 銷售目錄所載之利得豐保證書；及

(iv) 銷售目錄所載之任何附加通知及條款，包括「給準買家指引」；及在各情況下按任何銷售通知或拍賣官於拍賣時所公佈所修訂。

(b) 利得豐作為拍賣官，以賣家之代理身份行事。賣家及買家直接訂立銷售合約。然而，利得豐可能擁有拍賣品（及在該情況下以委託人之身份作為賣家行事）及／或可能以抵押債權人或其他身份擁有拍賣品之法律、實益或財務利益。

2. 一般條款

於本業務規則：

「競投人」指以任何方式考慮、作出或嘗試競投之任何人士，包括買家在內；

「買家」指拍賣官所接納最高競投價或要約之人士，包括以代理人身份競投之人士之委託人；「買家之費用」指買家應向利得豐支付之任何成本或費用；「買家支付之酬金」指根據準買家指引所載費率買家按成交價應付之佣金；

「廢品」指利得豐保證書所定之涵義；

「成交價」指拍賣官以擊槌接納之最高競投價，（倘為葡萄酒，則參考該批拍賣品內可個別識別之物品數目按合適比例），或倘為拍賣後銷售，則為協定出售價；

「底價」指賣家同意出售拍賣品之最低成交價（保密）；

「賣家」指提供拍賣品出售之人士（包括其代理（不計利得豐在內）、遺囑執行人或遺產代理人）；

「利得豐」指 Luxeford Hong Kong Limited，其註冊辦事處位於香港夏慤道10號1810室；

「利得豐公司」指於香港的利得豐；及其任何附屬公司（定義見公司條例第32 章第2 節）。

3. 競投人及利得豐有關出售物品之責任

(a) 利得豐對各拍賣品之認識部份依賴賣家向其提供之資料，利得豐無法及不會就各拍賣品進行全面盡職審查。競投人知悉此事，並承擔檢查及檢驗之責任，以使彼等滿意彼等可能感興趣之拍賣品。

(b) 利得豐提呈出售之各拍賣品於出售前可供競投人檢查。在競投人（鑑於有關拍賣品之性質及價值及競投人之專業知識而言屬合適者，以及代表彼等之獨立專家）已當作在投標前全面檢驗拍賣品，並滿意拍賣品之狀況及其描述之準確性，利得豐方會接受競投人對拍賣品之投標。

(c) 競投人確認眾多拍賣品年代久遠及種類特殊，意味拍賣品並非完好無缺。所有拍賣品均以拍賣時之狀態出售（無論競投人是否出席拍賣）。狀況報告或可於檢查拍賣品時提供。目錄描述及狀況報告在若干情況下可用作拍賣品某些瑕疵之參考，然而，競投人應注意，拍賣品可能存在其他在目錄或狀況報告內並無明確指出之瑕疵。解說只供鑑定用

途，將不會當作為拍賣品真實狀況之全部資料。

(d) 提供予競投人有關任何拍賣品之資料包括任何預測資料（無論為書面或口述）及包括任何目錄所載之資料、規則或其他報告、評論或估值，該等資料並非事實之陳述，而是利得豐所持有之確實意見之聲明，故不應依賴任何預測作為拍賣品售價或價值之預測，且該等資料可由利得豐不時全權酌情決定修改。

(e) 利得豐或賣家概無就任何拍賣品是否受任何版權所限或買家是否已購買任何拍賣品之版權發出任何聲明或保證。

(f) 受上文規則第3(a)至3(c)條所載事項及下文規則第4 條所載特定豁免所規限，利得豐在目錄描述或狀況報告作出之明示聲明，應以該等規則有關之出售中有關拍賣品之拍賣官身份相符之合理審慎態度作出；以及基於

(i) 賣家向其提供之資料；(ii) 學術及技術知識；及(iii) 相關專家普遍接納之意見作出之明示聲明，在各情況下應以合理審慎態度作出明示。

4. 對買家之責任豁免及限制

(a) 倘利得豐視拍賣品為廢品並符合保證書內之各條件，將退回買入價予買家。

(b) 就上文規則第3 條之事項而言及受規則第4(a)及4(c)條所規限，利得豐或賣家均毋須：

(i) 對利得豐（或任何利得豐公司）向競投人以口述或書面提供之資料之任何錯誤或遺漏負責，無論是由於疏忽或因其他原因引致，惟上文規則第3(f)條所載者則除外；

(ii) 向競投人作出任何擔保或保證，於賣家之業務規則第2 條中賣家向買家作出之明示保證以外之任何暗示保證及規則則不包括在內（惟法律規定不可免除之該等責任除外）；

(iii) 就利得豐有關拍賣或有關出售任何拍賣品之任何事宜之行動或遺漏（無論是由於疏忽或其他原因引致）向任何競投人負責。

(c) 除非利得豐擁有出售之拍賣品，否則毋須就賣家違反該等規則而負責

(d) 在不影響規則第4(b)條之情況下，競投人向利得豐或賣家提出之任何索賠以該拍賣品之買入價為限。利得豐或賣家在任何情況下均毋須承擔任何相因而產生的損失。

(e) 規則第4 條概無免除或限制利得豐有關利得豐或賣家作出之任何具欺詐成份之失實聲明，或有關利得豐或賣家之疏忽行為或遺漏而導致之人身傷亡之責任。

5. 拍賣會上競投出價

(a) 利得豐可全權酌情決定拒絕參與拍賣。競投人必須填妥競投登記表格，並提供利得豐所需資料及參考。除獲利得豐書面同意以另一方之代表身份出價，否則競投人必須以主事人身份行動。競投人親自負責出價，倘為代理，則視作共同及分別為其主事人負責。

(b) 利得豐建議競投人出席拍賣會，但將尋求進行缺席者以港元作出之書面出價競投，而利得豐認為，有關款項在出售拍賣品前已預先付清，以確保首先接收之書面競投享有優先權。

(c) 如有提供，可免費提供書面、電話競投之附加服務，惟風險由競投人承擔，而該等服務會在利得豐於拍賣時其他承諾之規限下，以合理審慎態度提供；因此，除非不合理地未能作出該競投，否則利得豐毋須就未能作出該競投承擔責任。電話競投可能會被紀錄。

6. 拍賣之行動

(a) 除另有訂明外，否則所有拍賣品均以底價出售，該價格不得高於拍賣時估計之預售低價。

(b) 拍賣官可隨時絕對酌情決定拒絕或接受任何競投、撤回任何拍賣品、重新出售拍賣品(包括在擊槌後)，以及採取其合理地認為是合適之

其他行動。

(c) 拍賣官會在彼認為合適之水平及增幅下開始及進行競投，並有權代表賣家作出競投或一連串競投，惟以底價為限，而毋須表示彼正進行該等行動及是否已作出其他競投。

(d) 受規則第6(b)條所限，買家及賣家之合約於拍賣官擊槌時訂立，據此買家須支買入價。

(e) 於拍賣會後出售任何在拍賣會上發售之拍賣品時應包括該等規則，猶如已在拍賣會出售一樣。

7. 付款及領取

(a) 除非另有協定，否則不論拍賣品之出口、進口或其他許可證之任何規定為何，均必須於拍賣會結束（「到期日」）後七天內以港元支付拍賣品之買入價及任何買家之費用。

(b) 所購拍賣品之擁有權將於利得豐悉數收取買入價及買家之費用後方可轉移。利得豐概無責任將拍賣品交給買家直至拍賣品之擁有權已轉移，且已獲提供適當確認而提早交付不會影響擁有權之轉移或買家支付買入價及買家之費用之無條件責任。

(c) 買家有責任安排在拍賣會後不少於三十天內內領取已購買之拍賣品。已買之拍賣品由(i)領取；或(ii)拍賣會後第三十一天（以較早日期為準）起之風險由買家承擔（因此，由彼等自行負責保）。直到風險轉移，利得豐將就拍賣品之任何損失或損毀向買家支付賠償，惟以所付之買入價為最高限額。買家應注意，利得豐對損失或損毀責任之承擔須受賣家之業務規則第6條所載之豁免情況所限。

8. 欠繳款之補償方法

在不影響賣家可能擁有之任何權利之情況下，倘買家在未預先協定之情況下未能在拍賣會後七天內或未能按照與利得豐協定之任何付款安排就拍賣品支付全數款項，利得豐可全權決定（在已知會賣家之情況下）行使以下一項或多項補救方法：

(a) 將拍賣品貯存在其處所或其他地方，風險及費用完全由買家承擔；

(b) 終止拍賣品之買賣合約，並就買家違約保留追究損害賠償之權利；

(c) 以利得豐公司結欠買家之任何金額抵銷買家就拍賣品結欠利得豐之任何金額，及／或抵銷拍賣品根據以下規則第8(h)條重售時買入價及買家之費用之任何差額（倘多於一項拍賣品由買家於拍賣會中買入並其後被重售，則按比例計算），及／或抵銷利得豐就買家違約對買家提出之任何損害賠償申索（包括但不限於在終止買賣合約之情況下買家支付之酬金）；

(d) 按利得豐認為合適將買家或買家透過代表就本交易或在其他情況下支付之任何款項(包括訂金)用以支付(i)買家結欠任何利得豐公司之任何成本、買家之費用或債務，及／或(ii)拍賣品根據以下規則第8(h)條重售時買入價及買家之費用之任何差額（倘多於一項拍賣品由買家於拍賣會中買入並其後被重售，則按比例計算），及／或(iii)利得豐就買家違約對買家提出之任何損害賠償申索（包括但不限於在終止買賣合約之情況下買家支付之酬金）。為避免疑問，倘買家於拍賣會中買入多於一項拍賣品並已支付部分款項，惟未能在拍賣會後五天內或未能按照與利得豐協定之任何付款安排就其買入之所有拍賣品悉數支付買入價，利得豐有權絕對酌情決定拒絕有關將上述部分付款之全部或部分用以支付買家買入任何特定拍賣品之買入價，及／或差價及／或利得豐所提出之損害賠償申索之任何指示或請求；

(e) 拒絕買家未來作出之競投或使其就未來之競投須支付訂金，該訂金在買家隨後拒絕付款或延期付款時，利得豐有權自行處理；

(f) 收取由到期日至悉數收取買入價及有關買家之費用當日期間按不超過每月2%之利率計算之利息；

(g) 對買家由利得豐公司管有之任何物品行使留置權。利得豐於行使任

何此等留置權時應知會買家，並在發出該通知之十四天內可安排出售該物品，以及將所得款項用以支付結欠利得豐之金額，及或拍賣品根據以下規則第8(h)條重售時買入價及買家之費用之任何差額（倘多於一項拍賣品由買家於拍賣會中買入並其後被重售，則按比例計算），及／或利得豐就買家違約對買家提出之任何損害賠償申索（包括但不限於在終止買賣合約之情況下買家支付之酬金）；

(h) 透過拍賣或私人出售重售拍賣品，並由利得豐酌情決定預測價格及底價。倘該重售之價格低於該拍賣品之買入價及買家之費用，買家將仍須承擔該差額，連同該重售產生之所有費用；

(i) 展開法律訴訟，以收回該拍賣品之買入價及買家之費用，或就買家違約申索損害賠償，連同利息及完全彌償基準上該訴訟之費用；或

(j) 向賣家透露買家之名稱及地址，使賣家可展開法律訴訟，以收回欠款，或就買家違約申索損害賠償，及申索法律費用。利得豐在向賣家透露該等資料前，將採取合理步驟通知買家。

9. 未領取購置品

(a) 倘買家支付買入價及買家之費用，但未於拍賣會後三十天內領取已購買之拍賣品，拍賣品將收藏於利得豐或其他第三方，費用（及風險）由買家承擔。

(b) 倘已支付所購拍賣品之費用，但未於拍賣會後六個月內領取該拍賣品，則買家授權利得豐（在通知買家後）安排以拍賣或私人出售重售該物品，而預測價格及底價將由利得豐酌情決定。除非買家在該拍賣會後兩年內收取該出售之所得款項扣除利得豐產生之所有費用，否則該筆款項將被沒收。

10. 出口及許可證

買家須自行負責識別及領取拍賣品之任何必要之進出口、軍火槍械、瀕臨絕種生物或其他方面之許可證，以及完成任何必要進出口提單、清單或文件。銷售目錄中任何符號或提示反映利得豐於編制目錄時所持之合理意見，並僅為競投人提供一般指引而已。在不影響上文規則第3及4條之情況下，利得豐及賣家概無就任何拍賣品是否受進出口限制或任何禁運作出聲明或保證。不獲發任何許可證或執照並非取消或撤銷銷售合約或任何延遲付款之充分理由。吾等概不會就任何無法完成或遞交所需進出口提單、清單或文件而產生之任何責任負責。

11. 一般資料

(a) 拍賣會之全部影像及其他物料均屬利得豐版權所有，僅由利得豐酌情使用。

(b) 給予利得豐之通知應以書面發出，註明出售之負責部門及銷售圖錄開端指定之參考號碼。給予利得豐客戶之通知應以彼等正式通知利得豐之最新地址為收件地址。

(c) 倘因任何理由無法執行該等業務規則之任何條文，則餘下條文應仍然具有十足效力及作用。

(d) 未經利得豐之事先書面同意前，任何買家不得轉讓該等業務規則，但對買家之繼承人、承付人及遺產執行人具有約束力。利得豐之行動、遺漏或延遲不應視為豁免或解除其任何權利。

(e) 上文規則第1(a)條所載之資料列明了有關本文主題之整份協議及各方之間就此方面之諒解。各方已協定，除有關具欺詐成分之失實聲明之責任以外，概無訂約方根據該等條款依賴並無明確指明該等資料之任何聲明、保證或承諾而訂立任何合約。

12. 資料保障

基於管理、經營業務、市場推廣以及利得豐公司提供之服務或按法律規定之用途，利得豐可能向客戶要求提供其個人資料或向第三方索取有關資料，如信貸資料等。如客戶所提供予利得豐的資料在法律定義下為“敏感性資料”，客戶同意利得豐可能把該等資料用作以上用途。

利得豐在未獲得客戶明確同意前將不會將該等敏感資料作其他用途。客戶如欲查詢更多有關利得豐對個人資料之規定或更改個人資料，請致電 +852 2899 2128 與我們聯絡。客戶如不希望收到以電郵或郵寄方式發出之節目或活動預告，請在本格加「」號。

為履行客戶所要求之服務，利得豐有可能向第三方，如船務公司披露資料。部份國家未能提供與香港相同之個人資料法律保障。根據利得豐的公司政策，將要求該第三方尊重客戶之私隱，將客戶的資料保密並提供與香港相同程度之個人資料保障，不論他們所處國家能否提供對個人資料之相同法律保障。客戶同意該等業務規則，即同意有關披露。客戶應注意基於保安理由，利得豐範圍內可能進行錄像拍攝。電話對話如電話競投及電話留言亦有可能被錄音。

13. 法例及司法權

監管法例該等業務規則及其有關或適用之所有事宜、交易或紛爭之各方面須受香港法例規管並按其詮釋。

司法權就利得豐之利益而言，所有競投人及賣家同意香港法院擁有專有司法權，調解所有因與該等業務規則有關或適用之所有事宜或交易之各方面而產生之紛爭。各方均同意利得豐將保留權利在香港法院以外之任何法院提出訴訟。

送達法律程序文件所有競投人及賣家不可撤回地同意透過傳真、面送方式、郵寄或香港法例、送達地點之法例或提出訴訟之司法權區之法例允許之其他方式，將有關任何法院訴訟之法律程序文件或任何其他文件送發至買家或賣家知會利得豐之最新地址或任何其他常用地址。

保證書

本公司對閣下提供之一般保證：

倘利得豐所出售之物品其後被發現為「膺品」，根據下文之條款，利得豐將取消該銷售，並將買家就該物品支付予利得豐之總金額，以原銷售之貨幣退還予買家。

就此而言，根據利得豐合理之意見，「膺品」指仿製之拍賣品，欺騙作

品出處、原產地、日期、產出年數、年期、文化或來源等各方面，而上述各項之正確描述並無收錄於目錄內容（考慮任何專有詞彙）。拍賣品之任何損毀及／或任何類型之復元品及／或修改品（包括重新塗漆或在其上塗漆），不應視為膺品。謹請注意，倘發生以下任何一種情況，本保證將不適用：—

(i) 目錄內容乃根據學者及專家於銷售日期獲普遍接納之意見，或該目錄內容顯示該等意見存在衝突；或

(ii) 於銷售日期，證明該物品乃贗品之唯一方法，是有關工序並非當時普遍可用或認可、價格極高或用途不切實際；或可能已對拍賣品造成損壞或可能（根據利得豐合理之意見）已令拍賣品喪失價值之方法；或

(iii) 倘根據拍賣品之描述，該拍賣品並無重大喪失任何價值。

本保證所規定之年期為有關拍賣日期後五(5)年，純粹提供給買家之獨享利益，且不可轉移至任何第三方。為能依據本保證申索，買家必須：—

(i) 在收到任何導致買家質疑物品之真偽或屬性之資料後三(3)個月內以書面通知利得豐，註明拍賣品編號、購買該拍賣品之拍賣日期及被認為是贗品之理由；及

(ii) 將狀況與銷售予買家當日相同，並能轉移其妥善所有權且自銷售日期後並無出現任何第三方申索之物品退還予利得豐。

利得豐可酌情決定豁免上述任何規定。利得豐可要求買家索取兩名為利得豐及買家雙方接納之獨立及行內認可專家之報告，費用由買家承擔。利得豐毋須受買家出示之任何報告所規限，並保留權利尋求額外之專家意見，費用由利得豐自行承擔。倘利得豐決定根據本保證取消銷售，利得豐或會將最多為兩份經雙方審批之獨立專家報告所需之合理費用退還予買家。

（本規則之中文譯本僅供參考之用，中文譯本如與英文原本有任何抵觸，將以英文原本為準。）

Payment Instructions

For details of payments please refer to the Terms and Conditions printed in this catalogue and also listed on our website.

Payment is due in HK Dollars immediately 7 days after the sale and may be made by the following methods: Cash, Banker's Draft, Cheque, Wire Transfer and Credit Card (MasterCard, China Union Pay & Visa).

Cheques and banker's drafts should be made payable to Luxeford Hong Kong Limited. We only accept personal and company cheques drawn in HK dollars on Hong Kong banks.

Bank transfers should be made to:

The Hongkong & Shanghai Banking Corp. Ltd
1 Queen's Road, Central, Hong Kong
Account name: Luxeford Hong Kong Limited
HKD Account No.: 848-202982-001
Bank Code: 004
Swift Code: HSBCHKHCHKH

Please include your name, Luxeford account number and invoice number with your instructions to your bank. All payment by transfer received by Luxeford must be the exact amount as shown on the invoice or any payment instructions issued by Luxeford. Clients are responsible for all bank charges relating to bank transfers.

Credit Card If you wish to pay for any purchase with your MasterCard, China Union Pay or Visa, you must present the card in person to Luxeford Hong Kong. Credit card purchases may not exceed HK\$1,000,000. Please note that Luxeford reserves the right to decline payments received from anyone other than the buyer of record and that clearance of such payments will be required. Additional 3% surcharge applies for all credit card payments.

Please contact our Accounts Department if you have any questions concerning payment.

SALE NUMBER: _____

BIDDING INCREMENTS

Bidding generally opens below the low estimate and advances in increments of up to 10%, subject to the auctioneer's discretion. Absentee bids that do not conform to the increments set below may be lowered to the next bidding interval.

HK\$1,000 – 2,000	by HK\$100s
HK\$2,000 – 3,000	by HK\$200s
HK\$3,000 – 5,000	by HK\$200, 500, 800
HK\$5,000 – 10,000	by HK\$500s
HK\$10,000 – 20,000	by HK\$1,000s
HK\$20,000 – 30,000	by HK\$2,000s
HK\$30,000 – 50,000	by HK\$2,000, 5,000, 8,000
HK\$50,000 – 100,000	by HK\$5,000s
HK\$100,000 – 200,000	by HK\$10,000s
HK\$200,000 – 300,000	by HK\$20,000s
HK\$300,000 – 500,000	by HK\$20,000, 50,000, 80,000
HK\$500,000 – 1,000,000	by HK\$ 50,000
Above HK\$1,000,000	at auctioneer's discretion

The auctioneer may vary the increments during the course of the auction at his or her own discretion. With respect to lots that are offered without reserve, unless there are already competing bids, the auctioneer, in his or her discretion, will generally open the bidding at 50% of the low pre-sale estimate for the lot. In the absence of a bid at that level, the auctioneer will and then continue up from that amount.

Absentee bids will, in the absence of a higher bid, be executed at approximately 50% of the low pre-sale estimate or at the amount of the bid if it is less than 50% of the low pre-sale estimate.

The auctioneer will usually only accept bids for Top Lots if a deposit has been arranged prior to the day of sale and the Top Lot pre-registration form shall be sent to the Bid Department.

If you are not successful in any bid and do not owe Luxeford or its group of companies any debt, the deposit will be refunded to you. Please make sure that you provide your bank details in the Top Lot pre-registration form.

1. I request Luxeford to bid on the stated lots up to the maximum bid I have indicated for each lot.
2. I understand that if my bid is successful the amount payable will be the sum of the hammer price and the buyer's premium (together with any taxes chargeable on the hammer price and buyer's premium). The buyer's premium will be added to the hammer price and is payable by the buyer as part of the total purchase price. The buyer's premium is 20% of the first HK\$4,000,000 of the hammer price of each lot, plus 12% of any amount in excess of HK\$4,000,000.
3. I confirm I have read the Important Notice, Guide for Prospective Buyers, Condition of Business sections, and The Personal Information printed in the sale catalogue which covers the Lot(s) I register to bid in this form, as well as the no third party payment notice and agreed to be bound by its terms.
4. I understand that if Luxeford receive absentee bids / after sale absentee bids on a lot for identical amounts and at the auction these are the highest bids on the lot, Luxeford will sell the lot to the bidder whose written bid it received and accepted first.
5. Absentee bids submitted on "no reserve" lots will, in the low estimate or at the amount of the bid if it is less than 50% of the low estimate.

I understand that Luxeford written bid service is a free service provided for clients and that, while Luxeford will be as careful as it reasonably can be, Luxeford will not be liable for any problems with this service or loss or damage arising from circumstances beyond Luxeford reasonable control.

ABSENTEE / TELEPHONE / SAFETY BID FORM (Please circle)

All bids must be received at least 24 hours before the sale begins. Luxeford will confirm all bids received by fax or email. If you have not received our confirmation, please resubmit your bid(s) to the Bids Department. Fax: +852 2899 2730 / email: bids@luxeford.com

I request Luxeford, without legal obligations of any kind on its part, to bid the following Lots up to the price given below. I understand that if my bid is successful the purchase price payable will be the sum of the hammer price and a premium at the rate listed in the Condition of Sale. All bids shall be treated as offers made on the Conditions of Sale printed in the catalogue. I also understand that Luxeford provides the service of executing bids on behalf of clients for the convenience of clients and that Luxeford will not be held responsible for failing to execute bids. If identical written bids are received for the same lot, the written bid received first by Luxeford will take precedence.

PLEASE PRINT CLEARLY IN BLOCK LETTERS

[illegible]

A.	Bidder's Details	
	Client No.	
	Client Name	
	Contact Number	
	Mobile Number	
	Fax Number	
	Email Address	
	Invoicing Name	
	Invoicing Address	
	Please tick if you prefer not to receive information about our upcoming sales by email.	

B.	Identity Documents and Financial References
-----------	--

If you have not previously bid or consigned with Luxeford, please attach copies of the following documents. Individual: government-issued photo identification (such as a national identity card or passport), proof of current address (utility bill or bank statement). Corporate clients: a certificate of incorporation and Business Registration. Other business structures such as trusts, offshore companies or partnerships: please contact Luxeford for advice on the information you should supply. If you are registering to bid on behalf of someone who has not previously bid or consigned with Luxeford, please attach identification documents for yourself as well as the person/entity on whose behalf you are bidding, together with a signed letter of authorization from the person/entity. New clients, clients who have not made a purchase from Luxeford within the last two years, and those wishing to spend more than on previous occasions will be asked to supply a bank reference. If you are asked to provide a deposit, you will need to submit the evidence of payment to Luxeford and your absentee bid form will only be considered to have been received when we receive the evidence of payment.

C.	Declarations
----	---------------------

- I confirm I have read the Important Notice, Guide for Prospective Buyers, Condition of Business sections, and The Personal Information printed in the sale catalogue, as well as the no third party payment notice and agreed to be bound by its terms.
- The auctioneer will usually only accept bids for Top Lots if a deposit has been arranged prior to the day of sale and the Top Lot pre-registration form has been completed. The Top Lot pre-registration form shall be sent to the Bid Department of Luxeford 24 hours before the sale. I understand that if I have not completed the Top Lot pre-registration before sale I will not be permitted to bid for Top Lots. This applies to Saleroom, Absentee, Telephone, and Safety Bids.
- If you are not successful in any bid and do not owe Luxeford or Luxeford group of companies any debt, the deposit will be refunded to you. Please make sure that you provide your bank details to us.

* I have read and understood this written bid form and the Important Notice, Guide for Prospective Buyers, Condition of Business sections, and the Personal Information printed in the sale catalogue

Client Signature _____ Date _____

SALE NUMBER: _____

競投價遞增幅度

競投一般由低於最低估價開始, 通常每次喊價之遞增幅度最高為10%, 拍賣官亦可於拍賣時自行決定更改每次增加之額度。書面競投價若與下列之遞增幅度不一致, 將被調低至下一個喊價金額。

競投價	每次喊價之遞增金額
港元1,000 – 2,000	港元100
港元2,000 – 3,000	港元200
港元3,000 – 5,000	港元200, 500, 800
港元5,000 – 10,000	港元500
港元10,000 – 20,000	港元1,000
港元20,000 – 30,000	港元2,000
港元30,000 – 50,000	港元2,000, 5,000, 8,000
港元50,000 – 100,000	港元5,000
港元100,000 – 200,000	港元10,000
港元200,000 – 300,000	港元20,000
港元300,000 – 500,000	港元20,000, 50,000, 80,000
港元500,000 – 1,000,000	港元50,000
港元1,000,000或以上	拍賣官自行決定

茲請求利得豐在無須負上任何法律責任下就下列拍賣品於下列競投價範圍內投標。就不設底價的拍賣品, 除非已有競投, 否則拍賣官有權自行斟酌決定起拍價, 通常會以拍賣品的售前低估價的50%開始拍賣。若在此價格下並無投標, 拍賣官會自行斟酌將價格下降繼續拍賣, 直至有客戶開始競投, 然後再由該投標價向上繼續拍賣。在沒有更高叫價的情況下, 不在場投標會以售前低估價大約50%成交, 但是若該投標價低於售前低估價的50%, 則以該投標價交易。

拍賣官一般僅接受已於拍賣日前已繳付保證金並已完成高額拍賣品預先登記人士之高額拍賣品競投。請將已填妥之高額拍賣品登記表格投遞或傳真至利得豐投標部。

若閣下未能成功競投任何拍賣品, 對利得豐或利得豐公司集團亦無任何欠款, 保證金將以退還給閣下。請確保閣下已提供相關的銀行資料詳情。

1. 茲請求利得豐就本表格所列的拍賣品進行競投, 直至本表格所列的最高出價。
2. 本人知悉如競投成功, 本人應付之購買款項為成交價及買方酬金 (以及所有基於成交價和買方酬金而產生的稅費)。買方支付之酬金費率按每件拍賣品成交價首港幣4,00,000元及以下, 酬金以成交價之20%計算; 加逾超過港幣4,000,000元以上之部份, 則以12%計算。
3. 本人確認已細閱讀本目錄中所列適用於我通過此表格登記競投拍賣品之重要通知, 業務規則, 給準買家之指引及個人信息條款, 並同意接受該業務規定的管限。
4. 本人理解如利得豐收到多個競投價相等的書面競投 / 拍賣後書面競投, 而在拍賣時此等競投價乃該拍賣品之最高出價, 則該拍賣品售給最先送達其書面競投書給本公司之競投人。
5. 如果您以書面競投一件“沒有底價”的拍賣品, 而且沒有其他更高叫價, 我們會為您以低端估價的50%進行競投; 如果您的投標價低於低端估價的50%, 則以您的投標價進行競投。

買本人亦明白, 利得豐的書面競投服務為一項向客戶提供的免費服務, 利得豐會合理謹慎進行, 利得豐不會就任何在利得豐控制的範圍以外產生的損失或賠償負責。

書面競投 / 電話競投 / 電話定限競投 (請圈上選擇)

所有競投表格須於拍賣前二十四小時遞交至利得豐。利得豐將以傳真或電郵確認快到閣下之競投表格。若閣下於一個工作天內還未有收到確認回覆, 請重新遞交表格。

傳真: +852 2899 2730 / 電郵: bids@luxeford.com

本人知悉如投標成功, 本人應付之購買價款為最後之競投價加上以下列酬金率算得之酬金, 酬金依每件拍賣品最後競投價乘以酬金費率得之。所有投標均根據本目錄後所載之業規定而作出。本人亦明白, 利得豐乃為方便顧客而提供代為投標的服務, 利得豐不因怠於投標而負任何責任。倘利得豐就同一項拍賣品收到相同競價之委託, 則最先收到者優先辦理。

請用正楷填寫清楚

拍賣品編號	拍賣品說明	競投價(港幣) (酬金不計在內)

A.	投標者資料	
客戶編號		
客戶姓名		
聯絡電話		
手提電話		
傳真號碼		
電郵地址		
付款者姓名		
付款者地址		
	如閣下選擇不以電郵方式接收本公司將舉行的拍賣資料, 請於方格內劃上“√”號	

B. 身份及財務証明

如閣下並未曾於利得豐託售或競投拍賣品, 請提供以下文件之副本: 個人帳戶: 1. 政府發出附有相片的身分證明文件(如居民身份証及護照) 2. 現時住址證明 (如公用事業帳單或銀行月結單)。公司帳戶: 1. 公司註冊證書 2. 商業登記證書。如閣下登記代表未曾於利得豐託售或競投拍賣品, 請附上閣下本人之身份證明文件, 及閣下所代表競投人士/單位的身分證明文件, 連同該人士/單位所簽發之授權書。新客戶, 或於過去兩年未有在利得豐投得拍賣品, 或本次欲出價金額高於過往之客戶, 須提供銀行信用證明及/或近期的銀行月結單, 亦或須繳付本公司所指定的有關保證金。如閣下被要求提供保證金, 閣下需將保證金之收據遞交利得豐。閣下的競投表格會右我方收到保證金之收據方可作實。

C. 聲明

- 本人已細閱本目錄中所列重要通告, 給準買家之指引, 業務規則, 個人信息及不接受第三方付款通告, 並同意遵守所有規定。
- 拍賣官一般僅接受已於拍賣日前已繳付保證金並已完成高額拍賣品預先登記人士之高額拍賣品競投。請將已填妥之高額拍賣品登記表格投遞或傳真至利得豐投標部。本人知悉若本人未於拍賣前完成高額拍賣品預先登記, 本人將不會被獲准競投高額拍賣品。此規定適用於所有投標包括拍賣現場, 書面, 電話, 及電話定限競投。
- 若閣下未能成功競投任何拍賣品, 對利得豐或利得豐公司集團亦無任何欠款, 保證金將以退還給閣下。請確保閣下已提供相關的銀行資料詳情。

*本人確認已細閱目錄中並理解本書面競投表格, 之重要通知, 業務規則及給準買家之指引

客戶簽名 _____ 日期 _____





LUXEFORD
premiere auction experience

Suite 3015, Convention Plaza Apartartments, 1 Harbour Road, Wan Chai, Hong Kong
T +852 2899 2128 M +852 6883 9621