

NEW - Ghosted Goods Auction 6/11/2026

LOT #

1 Mystery Box #3 - Valued Over \$100!
 Another Mystery Box brimming with relics that whisper stories older than your favorite history book. Inside this trove lies a hand-picked assortment of antique treasures, each one carrying the charm of forgotten eras. Inside you will find some unclaimed treasures. All we can say is...open at your own risk and enjoy at your own delight. We can guarantee that the total value of this mystery box is over \$100.



What we cannot guarantee is that you won't have questions about your life choices after opening it. Be spontaneous!
 Past Treasures Included: Vintage Camera, Antique Binoculars, Antique Opera Glasses, Antique Handbag, Electrician Knives, Vintage Straight Razors, Antique Scrapbook, Antique Dolls, Glass Paper Weight, Figurines, American Flag, Watch Fob, Beatles Memorabilia and Vintage Postcards! 50.00 - 5,000.00

92 Art Nouveau Seth Thomas Figural Clock "La Pensee"

This stunning Art Nouveau figural clock, titled "La Pensée" (The Thought), captures the quintessential elegance of the early 20th-century aesthetic. The piece features a graceful spelter figure of a woman in repose, leaning thoughtfully against the clock housing, finished in a rich, multi-toned bronze and verdigris patina. The timepiece itself is a high-quality Seth Thomas movement—a legendary American manufacturer based in Thomaston, Connecticut—featuring a clean white dial with classic Roman numerals and a beaded brass bezel. This style of "cabinet" or mantle clock was highly popular during the Belle Époque for its fusion of functional timekeeping and fine sculpture. Physically, the clock shows a charming aged patina with minor surface wear, small scuffs to the base, and light oxidation consistent with its 100-year history. The clock is currently non-operational and is missing the rear winding key and adjustment knobs. H 11.25", W 5", D 4". Please see photos for



LOT #

condition, 200.00 - 2,000.00

93 Antique Gilt Cast Metal Jewelry Box Clock

This is a charming example of late 19th to early 20th-century decorative functional art, likely of American origin given the "Made in U.S.A." marking visible on the lower dial. The piece features an ornate, rococo-style cast metal frame with a gold-tone gilt finish, showcasing intricate floral motifs, scrolled architectural supports, and a distinctive "pinecone" or "berry" cluster design on the hinged jewelry casket base. The clock is suspended within a decorative lyre-shaped arch, a popular aesthetic choice for Victorian and Edwardian dresser sets. While the metalwork remains structurally sound with a warm aged patina, the piece shows significant signs of age; the clock is currently non-operational, and the interior silk lining is shattered and exceptionally fragile. The dial displays heavy foxing and discoloration. H 11", W 8.25", D 4". Please see photos for condition.
 200.00 - 2,000.00



94 Art Nouveau Cherub Gilt Mantel Clock

This is an evocative example of turn-of-the-century Art Nouveau design, featuring a central winged cherub or "putti" supporting a circular dial within a frame of flowing, organic scrollwork. The piece is cast in metal—likely cast iron or white metal based on the oxidation patterns—and finished with a classic gilt or gold-tone overlay. The reverse of the frame is clearly stamped with the patent date "PAT OCT 2 1906". While the manufacturer is not explicitly signed on the dial, similar 1906-patented cherub frames from this era were frequently produced by notable American firms like the Western Clock Manufacturing Co. (later Westclox) or featured German movements. The dial itself exhibits stylized Arabic numerals and an ornate filigree center common to the aesthetic of the early 1900s. The piece shows significant age-related wear, including oxidation to the metal



NEW - Ghosted Goods Auction 6/11/2026

LOT #

casing, loss of the gilt finish on high points and the reverse, and minor yellowing of the dial face. The movement is functional when wound, though its accuracy is untested and the rear winding key and knobs show surface rust. Dimensions: 11" H x 7.75" W x 3.5" D. Please see photos for condition. 200.00 - 2,000.00

96 Art Nouveau Gilt Bronze Maiden Clock

An elegant example of the Art Nouveau movement, this mantel clock features a graceful maiden figure cast in bronze, surrounded by flowing organic lines and clover motifs characteristic of the late 19th or early 20th century. The piece retains traces of its original gilding, providing a rich contrast to the honest, aged bronze finish. While the sculptural case is remarkably complete, the timepiece is functionally a project piece; as the current dial is a non-original paper replacement measuring 2 5/8 inches in diameter. The internal movement is likely present, but the adjustment knobs are missing and it requires a full professional service to operate. Aside from the mechanical needs and the missing face, the bronze shows expected surface wear and fading to the gilt commensurate with age, but it presents beautifully as a decorative object. H 12.75", W 8", D 6". Please see photos for condition.



200.00 - 2,000.00

99 Bailey Banks & Biddle & Junghans Clocks

This lot features a sophisticated pair of horological specimens: a French-made Bailey Banks & Biddle Co. brass carriage clock and a mid-century Junghans "Repetition" alarm clock. The carriage clock is a true standout, boasting a heavy brass-and-glass case with a mercury-compensated pendulum—a classic Victorian-era design for maintaining accuracy—and a movement stamped "France". Its porcelain dial remains crisp with elegant numerals and the prestigious Philadelphia retailer's mark. The movement chimes on the hour and half-hour.



Accompanying it is a robust German Junghans alarm clock with a distinctive gunmetal-finish case and a luminous black dial. Both pieces show gentle signs of age; the brass carriage clock exhibits minor surface oxidation and tarnishing consistent with its era, while the Junghans clock shows

LOT #

light wear to the finish on the outer bezel and rear casing. Both are described as operational. Larger clock: H 12", W 7.25", D 5.25"; Smaller clock: H 5.25", W 4.5", D 3". 500.00 - 10,000.00

100 Scarce Waltham 8 Day Travel Clock w Clamshell

Hard to come by Waltham 8 Day travel clock featuring eye catching gold tone accents on decorative blue on white dial. Very good overall condition still featured inside original clamshell folding display; winds but does not work. Perfect addition to your collection, great gift idea. Please use photos to judge condition and bid accordingly. 200.00 - 1,000.00

**101 1894 Elgin National Watch Co Railroad Pocket Watch**

Handsome 1894 Elgin National Watch Company ornately etched railroad pocket watch. Featuring an 18 jewel BW Raymond movement with sophisticated white Roman numeral dial showcased inside ornately etched Keystone watch case boasting an eye catching railroad scene with a 20 year warranted GF J Boss dust cover both #2352676. Collection additionally includes photo postcard addressed to H.R. Bookman who is listed as the trains fireman to an address in Pennsylvania along with the photo postcards glass original negative of the same railroad crew standing in front of the same locomotive etched on to the pocket watches case. The postcard photo purportedly features the watches owner AND the trains Engineman H.R. Baskman, as noted on the postcard. The Trifecta. Watch works and was tested for a short period of time, was well cared for and in excellent overall condition, postcard in good overall condition with age and wear and glass negative in very good overall condition. Ready to keep you "On Time" for another 130 years; a true conversation piece. Perfect addition to your collection, please use photos to judge condition and bid accordingly.



800.00 - 10,000.00

NEW - Ghosted Goods Auction 6/11/2026

LOT #

136 14K Gold Natural Emerald Earrings Pair

Ladies 14k White Gold Natural Emerald drop earrings pair featuring friction post backing with a combined weight of 4.82 grams. Each set with 1, transparent, green, carved & drilled bead Natural Emerald Beryl (6.5 carat 11.5 x 8.5-9.0 x 5.0-6.0 mm); Vivid Slightly Bluish Green primary color & 1 transparent, green, carved leaf Natural Emerald, Beryl (1.75 carat 7.8 x 5.0 x 3.5-4.0 mm); Vivid Slightly Bluish Green primary color & 1 transparent white, emerald cut & round brilliant cut VVS2-VS1 Natural Diamond (0.45 carat 4.1 x 2.3 & 1.6-2.0) E-G color including Carte Blu Evaluation. Striking design; Great Gift Idea. Perfect addition to your lineup!! Please use photos to judge condition and bid accordingly. 7,500.00 - 100,000.00

**141 Pear Cut Natural Emerald Solitaire 14k WG Pendant**

Striking Pear Cut Natural Emerald Solitaire Pendant showcased inside well constructed 14k white gold claw setting 1.2 total grams. Emerald is natural and approximately 1 Carat +/- (6.0 mm x 8.0 mm). Attractive color perfectly accented with white gold setting. Great Gift Idea. Perfect addition to your lineup!! Please use photos to judge condition and bid accordingly. 500.00 - 10,000.00

**157 Guaranteed & Warranted Wrist & Pocket Watches**

Collection showcases (3) Warranted wrist watches & Warranted 20 year Creston gold filled pocket watch case along with (6) assorted gold tone pocket watch cases along with some parts. Perfect addition to your collection, please use photos to judge condition and bid accordingly. 100.00 - 10,000.00

**181 1940 14K Rolex Brevet 6564 Explorer Timepiece**

Men's 1940 14K yellow gold Brevet #6564 Explorer Rolex wristwatch serial number #214256. Round case houses self winding oyster perpetual movement & features a handsome white dial perfectly accented with gold raised slash indicators and attractive blue second hand. Paired flawlessly with a vintage 14K yellow gold



LOT #

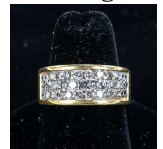
Rolex bracelet (loose links indicative of age and use) with fold-over deployment clasp. Works and keeps time; shows some minor cosmetic imperfections indicative of age and use including light surface scratches noticeable under close examination. No box or extra links to include, approximately 7"- 7 1/4". LOTS GOLD !!!! A must have for ANY MAN !!! Perfect addition to your lineup!!! Do you owe your Dad BIG TIME... this would certainly bring a smile ear to ear. Father's day is right around the corner and he's good with the socks and ties. Get the MAN what HE WANTS!!! Give that MAN the memory he DESERVES !!! Fantastic Gift Idea... A True Collectors Watch!!! Please use photos to judge condition and bid accordingly. 15,000.00 - 1,000,000.00

182 14k Ladies 1.15 Carat Old European Diamond Ring

Attractive ladies vintage 14k Diamond solitaire ring. Showcasing a fabulous 1.15 carat (6.70 x 6.62 x 4.15 mm) round solitaire VS1 J/K Old European diamond. Common heavy with large open cutlet, 1g natural at girdle, pinpoints. Exquisitely cut; presents EXTREMELY WELL with A LOT of dazzling RAINBOW COLOR sparkle featured inside an elegant 14k yellow gold setting. This European Cut Diamond showcases EVERY Color of the Spectrum !! A REAL EYE Opener !!! Perfect Gift Idea for that special lady in your life !!! Please use photos to judge condition and bid accordingly. 6,000.00 - 100,000.00

**183 Ladies 18k Yellow Gold Pave Diamond Wedding Band**

Ladies 18k yellow gold pave diamond wedding band. Approximately 1.15 +/- carats of radiant SI showcased inside a well constructed heavy 18k yellow gold 9mm setting with a total weight of 11.9 lovely grams. Diamonds are featured inside three row aka 3-D rectangular design. Size 6 with a pair of sizing beads professionally attached. Presents extremely well large heavy presence of yellow gold perfectly accented with dazzling SI pave diamonds with minor signs of age and wear. Perfect addition to your lineup!!! Great Gift Idea for that Special Someone !!! Zero disappointments this guaranteed to bring a smile!!! Please use photos to judge condition and bid accordingly. 5,000.00 - 10,000.00



NEW - Ghosted Goods Auction 6/11/2026

LOT #

184 14k White Gold Masonic Blue Lodge Signet Ring

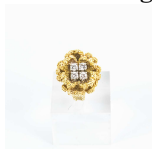
Handsome Art Deco 14k white gold Masonic signet; specifically Blue Lodge or Craft Lodge with the iconic square and compasses symbol "G" showcases on rectangular synthetic ruby. Perfectly accented with hand etched patterns featured on its sides; sized 10.5 with a total weight of 6 lovely grams. Great Gift Idea. Perfect addition to your collection, please use photos to judge condition and bid accordingly. 600.00 - 10,000.00

**185a Ladies 14k Opal Accented Hidden Geneva Watch**

Vintage ladies 14k Opal Accented hidden wristwatch. A Real Eye Catcher !!! Striking case is embellished with (9) attractive Opals, which really "POP" out on handsome well constructed 14k yellow gold setting. Case lifts up to feature an Geneva Incabloc face with gold dots & sashes hour markers. Working (tested for short period of time) 17 Jewel movement showcased inside intricate mesh bracelet with a total weight of 28.4 lovely grams. Presents Perfectly and in excellent overall condition!!! Clasp features safety chain and is stamped 14k; the backside of the watch case is stamped 14k and acid tested for purity. Great Gift Idea with ZERO DISAPPOINTMENTS !!! Guaranteed ear to ear smile !!! Please use photos to judge condition and bid accordingly. 3,500.00 - 100,000.00

**185b Ladies Vintage 14k Diamond Accented Flower Ring**

Vintage Ladies diamond cluster 3-D flower motif cocktail ring. Well constructed heavily textured 14k yellow gold setting is perfectly paired with (4) centralized .10 ct SI round brilliant diamonds. Chunky GOLD setting with a total weight of 12.2 heavenly grams; size 4. Presents Perfectly and in excellent overall condition!!! Acid tested to ensure purity. Great Gift Idea with ZERO DISAPPOINTMENTS !!! Guaranteed ear to ear smile !!! Please use photos to judge condition and bid accordingly. 1,500.00 - 100,000.00



LOT #

187 1960s Men's Rolex Champaign Dial Datejust

1960s Mens Rolex Datejust perfectly accented on a two tone bracelet showcasing a handsome Champaign dial. Presents very well with minor signs of age and wear; some surface scratches on lens and clasp. Works and keeps time, tested for a short period of time. Comfortable fit with a loose worn bracelet; approximately 7.5". Fantastic Gift Idea !!! Must Have for any collection. Perfect addition to your lineup!!! Please use photo to judge condition and bid accordingly. 7,000.00 - 100,000.00

**188 Goliath Open Face Pocket Watch w Argentan Case**

Goliath open face Pocket Watch with Argentan case. Very good overall condition with minor signs of age and wear; Porcelain dial shows some cosmetic imperfections. Presents well, works, tested for a short period time. Perfect addition to your collection. Please us photos to judge condition and bid accordingly. 600.00 - 10,000.00

**189b 1940s 18k Gold Angelus Chronadato Chronograph**

1940s Angelus Chronadato Chronograph Swiss made timepiece featuring an 18k gold case. Presents extremely well and in very good overall condition, featured on black alligator band. Works, tested for a short period of time. Perfect addition to your collection, please use photos to judge condition and bid accordingly. 7,000.00 - 100,000.00

**189c 1980s Ladies Diamond & Emerald MOP Rolex Datejust**

1980s Ladies Rolex Datejust perfectly paired with an attractive Mother of Pearl dial with diamond and emerald highlighted bezel on a two tone bracelet. Presents extremely well with minor signs of age and wear, works tested for a short period of time. Box is included. Perfect addition to your lineup!!! Fantastic Gift Idea!! Please use photos to judge condition and bid accordingly. 7,000.00 - 100,000.00



NEW - Ghosted Goods Auction 6/11/2026

LOT #

302 TONED 1878 8TF Morgan Silver Dollar VAM 9 AU \$1

1878 8TF eight tail feathers Morgan Silver Dollar RAW AU +/- Coin; VAM 9?

Lustrous Silver Dollar perfectly accented with elegant golden toned reverse !! A Real STUNNER with LOTS OF LUSTER and Eye Appeal !! Handsome silver collector coin & Possible submission candidate.

Fantastic addition to your collection, great gift idea. Please use photos to judge condition and bid accordingly. 1,200.00 - 12,000.00

**321 1908-S Indian Head 1C Cent Penny RAW VF-35 1c**

1908-S Indian Head Penny, Raw VF-35

coin? Tough to come by collector copper cent! Fantastic set filler!!! Perfect addition to your collection, great gift idea. Please use photos to judge condition and bid accordingly. 200.00 - 2,000.00

**322 +++ 1875 Indian Head RAW XF 1C Cent Penny 1c +++**

1875 Indian Head Penny, Raw XF coin?

Tough to come by collector copper cent! Fantastic set filler!!! Perfect addition to your collection, great gift idea. Please use photos to judge condition and bid accordingly. 200.00 - 2,000.00

**323 1872 Indian Head SEMI KEY DATE Penny 1C**

1872 Indian Head Penny, Fine with Liberty Feathers RAW Coin? Tough to come by SEMI KEY DATE collector copper penny!

Fantastic set filler!!! Perfect addition to your collection, great gift idea. Please use photos to judge condition and bid accordingly. 300.00 - 3,000.00

**325 1889-CC CARSON CITY Morgan Silver Dollar KEY DATE**

1889-CC CARSON CITY Morgan Silver Dollar, Raw estimated VG10. Hard to come by KEY DATE, Perfect set filler. Solid Investment. Perfect addition to your collection, great gift idea. Please use photos to judge condition and bid accordingly.

1,500.00 - 15,000.00



LOT #

326 Toned 1866 Indian Head RED Cent UNC MS ++

Toned 1866 Indian Head Cent, (RED MS-63 ?) Hard to come by collector cent with LOTS of eye appeal. Handsome RED Cent perfectly accented with attractive toning. Perfect addition to your collection, great gift idea. Please use photos to judge condition and bid accordingly. 1,000.00 - 10,000.00

**327 1856 California GOLD Token NGC MS 62 Wreath #4e**

1856 Dated California Gold Indian Gold Token, NGC slabbed and graded MS 62 Wreath #4e ROUND, 11.7 mm. Slabbed collector GOLD coin; solid investment. Perfect addition to your collection, great gift idea. Please use photos to judge condition and bid accordingly. 500.00 - 5,000.00

**374 Foreign Banknote Currency Paper Money Assortment**

Foreign paper money currency banknote collection features 1923 Dominion of Canada 25 Cent Fractional, 1954 Canada \$1, 1937 Canada \$1, (3) Jamaica \$2, 1979 Jamaica \$10, (2) 1976 50 & (4) 1976 20 Peso Mexico, 1971 Mexico 5 Peso, 1974 & 1977 Ecuador 10 Sucres, 1974 Columbia 5 Pesos, 1973 & 1977 Mexico 10 Pesos, 1981 Mexico 100 & 500 Pesos, 1989 Mexico 2000 Peso, 1964 Royaume Vingt Francs, 1947 1000 Mille Lire, Luxembourg 20 Francs, 1960s Italy 1000 Lire Mille, 1936 Denmark 10 Kroner, 1966 50 Kroner, 1961 5 Kroner, 1967 France 10 Francs, 1975 Columbia 20 Pesos, 1967 Luxembourg Dix Francs, (2) 1990 1000 Lire, 1945 20 Francs, 1966 Italy 500 Lire, 1967 France 5 Francs, 1966 Netherlands 5 Gulden, 1951 Bulgaria 50 Leva, Scotland 1 Pound, Bank of England 1 Pound & 10 Schillings, Switzerland 10 Franc 1975 Columbia 20 Pesos, 1950s Banco De La Republica 100 & 50 & 10 Peso, Brazil Central Banco 100, (2) Korea 1000 Won, Italy 5000 Lire ALONG WITH (187) assorted Canada nickels, Assorted Canceled Stamps & Ambition Dime Saver and large collection of World Coins and tokens. Lots of Fun, perfect addition to your collection, please use photos to judge condition and bid accordingly. 100.00 - 1,000.00



NEW - Ghosted Goods Auction 6/11/2026

LOT #

516 Eclectic Coin & Currency Collection Ikes Wheats ++

Eclectic coin collection features (2) 1971 "Blue" Ikes Silver Dollars with envelopes, (73) Assorted Eisenhower IKE "Silver" Dollars, 1972 US Uncirculated mint set in cello no envelope, 1856 Braided Hair Large Cent, Little Steel Penny 3 pack, (2)1940, (2) 1941, 1946, 1948, 1949, (2)1954,1959, 1961, 1964, 1976, (2) 2005 Jefferson Nickels & 1936, 1938. 1939, 1941, 1942, (2)1944,1945, 1946-D, 1948-S, 1949-S, 1950-S, 1951-D, (2)1952-D, 1953-D Wheat Cents, (3) Assorted Medal Tokens IL Sesquicentennial, Chicago Fire & Apollo; USAF Return To England Medal, Hungary 5 Filler, Churchill Dollar, (5)1963 US Note Red Seal \$2 Bills & 1935 & (2)1957 \$1 Silver Certificate Bills. Lots of fun !! Perfect addition to your collection, please use photos to judge condition an bid accordingly. 200.00 - 10,000.00

**516a US Coin & Currency Collection 40% Silver Ikes +**

Collection features (10) Assorted 1957 US \$1 Dollar Silver Certificates; some crisp, 1935-H \$1 Dollar Silver Certificate Bill & Crisp 1976 \$2 Bill ALONG WITH 1968 & 1969 40% Silver US Proof Sets with ogp, 1968 & 1969 P&D 40% Silver US uncirculated sets with envelopes, 1976-S Eisenhower Kennedy & Washington Silver coins in cellophane, 1972 Blue IKE Eisenhower Dollar with envelope, 1971 & 1985 US Mint Sets in cellophane no envelopes, 2008-S Jackson Dollar NGC PF 69 Ultra Cameo, 1999 Statehood Quarter set in cellophane, US Liberty Clad Half Dollar with ogp, Assorted 1960s Jefferson nickels & Lincoln Cents. 200.00 - 10,000.00

**1105 Vintage Tostwich Sandwich Making Cabinet**

The toasted sandwich machine was invented about 1920 by Charles V. Champion of Catlin, Illinois. These cabinets were sold to drug stores and soda fountains to expand their offerings. It is a tall oak cabinet with glass sides holding a small electric grill and warming plate. A hanging glass shelf holds bread. On the operators side of the cabinet are 2 porcelain turn switches that controls the lights and the grill. One switch is broken. There are 4 four drawers for



LOT #

storage, a pull out wood cutting board, and storage below having 2 sliding doors which are missing. There was likely a glass panel for the back which was held in place by 4 latches, 2 missing. The inside of the cabinet has 3 porcelain lamp sockets with a light fixture and 2 metal vent caps on the cabinet top. All the electric is untested. The cabinet wheels are replacements. Overall measures 57" tall, 36" wide, 19.5" deep 1,000.00 - 100,000.00

1109 Vintage Popcorn Wagon, Cart

A vintage hand push popcorn venders cart made of metal and glass. Has gas burner for cooking popcorn. Front display glass panel has crack. Item has older amateur finish and metal panel has a few dings, dent, etc. Please see photos. Item also includes hundreds of N.O.S. popcorn bags. Cart in fair condition.



Sign: 18" w x 6" h

Cart: 37" l x 24" w x 50" h 200.00 - 10,000.00

1112 2 Ceramic Soda Fountain Syrup Jars & Pumps

2 ceramic soda fountain syrup jars made by Hall, 2 and pumps that fit into s soda fountain refrigerated rail like on the old Bastion Blessing units. Black exteriors with white interiors. One has a normal style pump, the other has a heavy duty adjustable pump. Both in VG condition. The heavy duty pump is missing the small glass flavor disc. Each measure 10.75" tall, 4.675" wide at the lip, 7.675" deep at the lip. Dimensions not including the pumps. 100.00 - 10,000.00

**1113 Caterpillar Farm Tractors DSP Advertising Sign**

Caterpillar Farm Tractors metal double sided porcelain flange advertising sign. Presents well with eye catching bold coloring along with some age and wear related cosmetic imperfections including some chips, paint loss & oxidation. "REG U.S. PAT OFF. Perfect addition to your collection; 10"t x 16.5"l. Please use photos to judge condition and bid accordingly. 300.00 - 10,000.00



NEW - Ghosted Goods Auction 6/11/2026

LOT #

1114 Mueller Bulk Milk Cooler Single-Sided Tin Sign

Mueller Bulk Milk Cooler Single-Sided Tin Sign, vintage advertising sign, given to farmers and dairymen to hang on their mile houses, showing they are using premium bulk cooling tanks produced by the Paul Mueller Co out of Springfield, MO, shows significant rust along edges and mounting holes, typical typography of agricultural dealers signs, see photos.

20" x 15" 100.00 - 1,000.00

**1117 Vintage Popcorn Machine Counter Base**

This charming piece is a quintessential example of early 20th-century commercial cinema or confectionery equipment, designed as a countertop base for a popcorn machine. Featuring a classic oak-finish wooden cabinet with glass side panels and an iconic "POP CORN" marquee, this unit brings an authentic nostalgic flair to any collection. The cabinet is accompanied by a removable aluminum ventilation adapter, which served as a modular component for managing heat and steam during high-volume use. While the cabinet shows its age through significant wear, such as surface scratches, dust, finish fading, and some minor wood degradation consistent with its utilitarian history, it remains structurally sound and retains the classic aesthetic sought after by collectors of vintage Americana. The metal components exhibit expected oxidation and patina consistent with age. H 20", W 17.5", D 17.5" (with removable vent, total H 26"). Please see photos for condition. Note: Pickup/Transport required. Contacts available post auction.

300.00 - 10,000.00

**1320 Unusual Hanging Stained Glass Chandelier**

This one is a little different. Has a larger crown, unusual side brackets and hangers. Different light socket locations for brighter light. Stained glass is in a grape motif. Overall in good with slight damage to one hanging bracket.

22" W x 14" H 500.00 - 10,000.00



LOT #

1333 Framed Print Of a Young Girl Eating Cherries

A 1905 print of a pretty young girl eating cherries titled "Cherry Ripe" framed under glass. Print is in fair condition with some paper loss to the edges and is undersized for the frame that it is in. Print measures 14.75" wide, 19.5" tall. Frame measures 23" wide, 27" tall. 100.00 - 10,000.00

**1335 Political Button Collection on Framed Board**

Large collection of political, labor, advertising, and statement pinbacks, pocket mirrors, and ribbons mounted on a framed piece of velvet cloth. There are over 125 pieces including political from Garfield, TR Roosevelt, Cleveland, Harding, Hoover, FDR, Eisenhower, Nixon, and Kennedy. Advertising includes Cerasota Flour, Victor Talking Machines, and others. WW I War Loan and Red Cross buttons, comic strip character buttons, labor, and fraternal organization badges. Frame measures 31" wide, 27" tall. A very interesting collection. 1,000.00 - 100,000.00

**1395 Antique Landscape Oil Painting in Frame**

This evocative, late 19th or early 20th-century landscape oil on canvas captures a serene, atmospheric mountain scene, rendered in a classic Romantic style with soft, diffused lighting and dramatic, snow-capped peaks. The composition features a lush foreground with deep greens and autumnal reds transitioning into a tranquil valley, held within an ornate, gilded gesso-on-wood frame that complements the traditional aesthetic. While no artist signature is immediately visible, the execution is consistent with period landscape work. The painting exhibits signs of age commensurate with its vintage, including some craquelure and minor surface wear; the frame remains structurally stable though it would benefit from professional restoration to address finish losses and consolidation of the gesso. H 28", W 42", D 3" Please see photos for condition. 120.00 - 10,000.00



NEW - Ghosted Goods Auction 6/11/2026

LOT #

1400 Sex & The City Cast Autographed Framed Photo

Sex and The City Cast Autographed 8" x 10" professionally framed & matted photo (13"t x 16"l). Presents perfectly showcased inside simplistic black frame highlighted with bold purple Sharpie signatures of Sara Jessica Parker, Kim Cattrall, Cynthia Nixon & Kristin Davis. Great Gift Idea!! Perfect addition to your collection, please use photos to judge condition and bid accordingly. 200.00 - 10,000.00

**1401 Tom Cruise Leonardo Decaprio Lee Majors Autos More**

Collection showcases a Tom Cruise Autographed 8" x 10" framed & matted photograph showcased inside simplistic 16"t x 14" black frame with COA, Leonardo De Caprio Autographed Titanic 8" x 10" photo, Richard Anderson Autographed "The Six Million Dollar Man Script", Lee Majors Autographed Bio-Back 8" x 10" photo & Woody Herman Autographed Orchestra program. Lots of Collectable Fun !! Great Gift Ideas !!! Please use photos to judge condition and bid accordingly. 200.00 - 10,000.00

**1402 Shania Twain Whitney Houston Celine Dion Autograph**

Collection showcases autographed Shania Twain 8" x 10" professionally framed and matted; 15.5"t x 13.5"l with COA, Whitney Houston autographed 8" x 10" photo with COA, Celine Dion autographed 8" x 10" photo & Kristi Yamaguchi framed and matted 8" x 10" photo with centralized autographed inside 18"t x 14" simplistic black frame. Perfect additions to your collection, Great Gift ideas !! Please use photos to judge condition and bid accordingly. 200.00 - 10,000.00

**1403 Peggy Lipton Autographed 1971 Warner Bros Contract**

Peggy Lipton SIGNED 1971 International Famous Agency Artist Manager contract for Warner Bros "The Delphi Bureau" TV series. Presents very well and in very good overall condition with minimal signs or age or wear. Perfect addition to your collection, please use photos to judge condition and bid accordingly. 200.00 - 10,000.00



LOT #

1404 2 Signed Sally Rand Photographs

2 Signed Sally Rand Photographs, invitations from Helen Mangam to meet Miss Sally Rand at Mangam's Chateau on Ogden Avenue in Lyons, Illinois, both in good condition, 7" x 4 1/2", see photos for autograph. 100.00 - 200.00

**1405 Ray Liotta AUTOGRAPHED Turbulence Movie Poster**

Fan Favorite Ray Liotta AUTOGRAPHED "Turbulence" Can You Survive The Ride?; 19"t x 13.5"l movie poster. Strong Silver felt tipped signature along posters edge. Perfect addition to your home or office. Please use photos to judge condition and bid accordingly. 100.00 - 10,000.00

**1406 Gerald & Betty Ford Signed White House Xmas Card**

Handsome Gerald R. Ford & Betty Ford framed collage showcasing an Autographed White House Christmas Card with Double Authentication from AAU (Authentic Autographs Unlimited) LOA as well as Prestigious Autographs LOA. Additionally featuring photos, Presidential Seal & Official Christmas Card nameplate. Professionally framed and matted 25.5"t x 25.5"l. Very good to Good overall condition with age and wear related cosmetic imperfections including scratches on the frame. Exactly As Pictured. Perfect addition to your home or office; Very Presidential!! Please use photos to judge condition and bid accordingly. 200.00 - 10,000.00

**1407 Gerald & Betty Ford Signed White House Xmas Card**

Handsome Gerald R. Ford & Betty Ford framed collage showcasing an Autographed White House Christmas Card with AAU (Authentic Autographs Unlimited) COA. Additionally featuring photos, Presidential Seal & Official Christmas Card nameplate. Professionally framed and matted 27.5"t x 26.5"l. Very good to Good overall condition with age and wear related cosmetic imperfections including scratches on the frame. Exactly As Pictured. Perfect



NEW - Ghosted Goods Auction 6/11/2026

LOT #

addition to your home or office; Very Presidential!! Please use photos to judge condition and bid accordingly. 200.00 - 10,000.00

1408 Arnold Schwarzenegger Signed Batman & Robin Poster

Arnold Schwarzenegger autographed Batman & Robin movie poster showcased in clean 42"t x 28.5" simplistic black frame. Featuring a strong silver felt tipped centralized signature. Perfect addition to your home or office. Exactly as pictured; please use photos to judge condition and bid accordingly. 100.00 - 10,000.00

**1409 The Back Street Boys AUTOGRAPHED Framed Photo**

The Back Street Boys Autographed 8" x 10" photograph; features all 5 signatures & professionally framed and matted 14"t x 16"l. Good overall condition with age and wear related cosmetic imperfections including scratches on the frame. Exactly As Pictured. Perfect addition to your collection, please use photos to judge condition and bid accordingly. 100.00 - 10,000.00

**1410 Fast & Furious & Titanic Autographed Framed Photos**

The Fast and the Furious Autographed photograph; features all 4 signatures (Vin Diesel, Paul Walker, Michelle Rodriguez, Jordana Brewster) & professionally framed and matted 17.5"t x 14.5"l. Along with Leonardo DiCaprio & Kate Winslet autographed Titanic photo; with Stans Sports Coa - professionally framed and matted 16"t x 14"l. Very Good to Good overall condition with age and wear related cosmetic imperfections including scratches on the frame. Exactly As Pictured. Perfect addition to your collection, please use photos to judge condition and bid accordingly. 100.00 - 10,000.00

**LOT #****1411 Rosalind Russell Signed Framed Canceled Check & P51**

Rosalind Russell autographed canceled check showcased with a Rosalind Russell "My Sister Eileen" All Clear Chesterfield Cigarette advertisement from Nov. 1942 Good Housekeeping magazine. Professionally framed and matted 23"t x 15"l. ALONG WITH Framed P51-Mustang professionally framed and matted print; 15.5"t x 19.5"l. Very Good to Good overall condition with age and wear related cosmetic imperfections including scratches on the frame. Exactly As Pictured. Perfect addition to your collection, please use photos to judge condition and bid accordingly. 150.00 - 10,000.00

**2017a Vintage Locomotive Railroad Bell**

Vintage Locomotive Railroad Bell, large cast metal brass bell, mounted within a metal frame on a wood base, shows oxidation and dust, see photos. This one is a little different, it is oblong not round. Nice railroadiana collectible! Overall good condition.

Stand: 19" D x 16" H

13" D x 10" W x 9 1/2" H

Bell: 14" x 13"

67lbs

Note: Pick Up or 3rd Party Transport only.

500.00 - 5,000.00

**2025 Pair of Vintage Dairy/Farm Advertising Crocks**

Pair of Vintage Dairy/Farm Advertising Crocks, stoneware butter crock from the Humboldt Dairy Products Co in Chicago, IL, small chips to edges of base, 9.25" x 6.25", a smaller stoneware butter crock, Pure Farm Products Co, Chicago, IL, 5.75" x 3.25", good condition, see photos. 200.00 - 2,000.00



NEW - Ghosted Goods Auction 6/11/2026

LOT #

2025a Red Wing 2-Gallon Salt Glazed Crock

Red Wing 2-Gallon Salt Glazed Crock featuring a cobalt blue "bee sting" with a number "2", brown glaze drips on side, no cracks or chips, good condition, see photos. 9 1/2" x 9 1/2" 200.00 - 2,000.00

**2025b Billings, Clapp & Co Chemists Stoneware Jug**

Billings, Clapp & Co Chemists Stoneware Jug, a prominent chemical manufacturing firm, Boston, MA, produced a wide array of pharmaceutical and industrial chemicals, aged-related condition, very minor chips to top and bottom rims, no cracks, very good condition, see photos. 11 1/2" tall 200.00 - 2,000.00

**2034 Emerson Oscillating Electric Desk Fan**

Emerson Oscillating Electric Desk Fan, model type 79648-AX, St. Louis, MO, late 1940s-early 50s features a black shiny finish, four matte black blades and a distinctive blue "Emerson Electric" badge, cast iron base and wire cage, has three settings, cloth-covered cord in good shape, turns on and works well, good condition, see photos. 18" x 20" 1,000.00 - 10,000.00

**2037b Antique Western Electric Wood Wall Phone**

This classic Western Electric "fiddleback" style hand-crank magneto wall phone represents a fascinating bridge between eras. Originally a turn-of-the-century oak set, it was later professionally retrofitted for mid-century use, featuring an internal Bell System rotary dial mechanism and a modern coiled handset cord. The unit retains its iconic twin nickel-plated bells and the signature "long pole" transmitter on the front. Inside, the original magneto remains alongside the later 1960s-70s era wiring and dial, complete with a Milwaukee "414" area code number card. The oak casing shows typical age-related wear, light scuffing, and dust; note that the bolt for the long pole swivel is missing and needs to be replaced. H 24", W 14", D 12". Please see photos for condition. Note: Pickup/ Transport required. Contacts available post auction. 300.00 - 10,000.00



LOT #

2039 Lavazza Caffe Espresso Advertising Light

Lavazza Caffe Espresso Advertising Light features branded lettering on blue background, designed to be hung by chains, Lavazza was founded in 1895, nice piece of coffee advertising history, light works, good condition, see photos. 21 1/2" x 10" 200.00 - 2,000.00

**2040 Framed Burlap Coffee Bean Bags Double Sided**

Framed Burlap Coffee Bean Bags Double Sided, branded "La Flor Del Cafe", originating from Guatemala, jute burlap originally used for transporting coffee beans, good condition, see photos. 27" x 35"



Note: Shipping will be higher due to the large frame size. 200.00 - 2,000.00

2040c Framed Burlap Coffee Bean Bags Double Sided

Framed Burlap Coffee Bean Bags Double Sided, branded "Product of Columbia", jute burlap originally used for transporting coffee beans, good condition, see photos. 28 1/2" x 35"



Note: Shipping will be higher due to the large frame size. 200.00 - 2,000.00

2041 Landers Frary & Clark Antique Coffee Grinder

Landers Fray & Clark Antique Coffee Grinder, No. 20 "Crown" coffee mill featuring a cast iron body and two 8.5" diameter wheels, manufactured in New Britain, Connecticut, base includes a wood drawer for catching grounds, some surface wear, good condition, see photos. 12 1/2" x 400.00 - 4,000.00

**2042 Antique Enterprise Mfg Co Cast Iron Coffee Grinder**

Antique Enterprise Mfg Co Cast Iron Coffee Grinder, Philadelphia, double-wheel cast iron features two flywheels and a brass hopper on a cast iron base, includes wooden drawer for ground coffee, used to manually grind beans in general stores, brass finish, stamped with patent dates "Oct 20 70" on hopper, "Oct 20 73" on base, good condition, see photos for completeness.



NEW - Ghosted Goods Auction 6/11/2026

LOT #

16 1/2" x 22" x 16 1/2"

57lbs

Note: Pickup/ Transport required. Contacts available post auction. 200.00 - 2,000.00

2044a (20) Vintage "Yesteryears" Westwood Coffee Mugs

(20) Vintage "Yesteryears" Westwood Coffee Mugs, featuring nostalgic coffee brand advertising, most of them from the Westwood Yesteryear Collection, all in good condition, see photos.

A charming collectible for coffee lovers and the perfect accent for any coffee station!

400.00 - 4,000.00

**2050a (4) Otto Bernz & Clayton Lambert Blowtorches**

4 Antique Blowtorches includes a vintage brass blowtorch with a brass tank for fuel, a pressure pump handle and a burner nozzle, manufactured by Otto Bernz Co, Newark, NJ, good condition, two Clayton Lambert Mfg Co, Detroit, MI, blowtorches in rough condition, and a Clayton Lambert blowtorch in good condition, approx 11.5" tall, see photos. 200.00 - 2,000.00

**2052 (14) Salt/Pepper Shakers, Pepper Mill, Spice Tins**

(14) Vintage Spice Tins, Salt & Pepper Grinder includes Barringer & Brown's Mustard, Golden Rule Allspice, Rawleigh's Cloves, Ben-Hur Allspice, Cinnamon, Sage, Marjoram, Coleman's Mustard, Clabber Girl Baking Powder, silver plated salt and pepper shakers, beaded design on the silver sleeves over a glass inserts, and a vintage Peugeot & Freres pepper mill, silver plated top with wood body, 4" tall, see photos. 200.00 - 2,000.00

**2052b (8) Vintage Flour Paper Sacks**

(8) Vintage Flour Paper Sacks including Eveready Buckwheat Pancake Mix, Geneva, IL, four Year Round Pancake Mix, Geneva, IL, Voight's Mother's Delight Crescent Flour and Voigt's Crescent Wheat Hearts, Grand Rapids, MI and two Geneva Belle Flour, Geneva, IL, all show age-related wear, some stains, rips and tears, see photos.

18 1/2" x 11", largest bag 100.00 - 1,000.00

**LOT #****2060a Radio Control Model 50" Sailboat & Transmitter**

Radio Control Model 50" Sailboat & Transmitter, unknown manufacture, vintage wooden construction, rigging and sails look present, but mast not secured to deck, deck cover missing to protect servo motors, two sailor figures stand on aft deck, bag with unknown plastic covers, transmitter is Futaba FP-T4L. 72.910 mhz, tip of antenna missing, all untested, see photos. A good project for an aspiring sailor!
Hull: 50" long x 10.75" wide x 78" from top of mast to base of keel (as it sits on display stand).

Note: Pickup/ Transport required. Contacts available post auction. 100.00 - 1,000.00

**2060b 46" Foss Maritime Model Tugboat**

Detailed 46" Foss Maritime model tugboat in good overall condition with some age and wear related cosmetic imperfections including discoloration and some broken accessory pieces. Perfect addition to your mancave!! Please use photos to judge condition and bid accordingly. 400.00 - 10,000.00

**2063 Mark Roberts 25" Welcome Santa & Mrs. Mistletoe**

Welcome Santa & Mrs Mistletoe Christmas display pieces by artist Mark Roberts. Toy maker No. 104 of 200 with COA. Very good overall condition, perfect addition to your collection. Please use photos to judge condition and bid accordingly. 500.00 - 5,000.00

**2064 Vintage Ice Saw**

Vintage Ice Saw, used for harvesting large blocks of ice, features a long, large-toothed metal blade designed to cut through thick ice, wooden handle, significant patina and surface rust, blade is 60" long, 77" overall, see photos.

Great decorative item for farmhouse or cabin!

Note: Pickup/ Transport required. Contacts available post auction. 100.00 - 1,000.00



NEW - Ghosted Goods Auction 6/11/2026

LOT #

2066 Vintage Flexible Flyer Wooden Steel Sled

Vintage Flexible Flyer Wooden Steel Sled designed for belly-flop riding, Flexible Flyer by SL Allen & Co, 46" x 21", shows age, nice decorative item for farmhouse or cabin, see photos. 100.00 - 1,000.00

**2067 Vintage Heal-Aseptic Kalasign Store Display Sign**

Vintage Heal-Aseptic Kalasign Store Display Sign features illustrations of medicine bottles and lists various uses such as for cuts, burns, scratches, and insect bites, made of heavy cardboard with graphics advertising it as "First in First Aid", comes with an unused product box, Middle West Laboratories in Bloomington, IL, small crack on right side bottle, top corner is missing part of the graphic, has stand on back for countertop display, see photos.



15 1/2" x 10" 100.00 - 1,000.00

2067a Vintage Sunbonnet Occident Flour

Vintage Sunbonnet Occident Flour, repurposed flour sack features the prominent red and yellow logo of the Russell-Miller Milling Company, established in 1882 in Valley City, ND, during the Great Depression families often repurposed cotton flour and feed sacks into clothing, quilts and accessories due to extreme poverty, shows age-related wear, stains and tear in the brim, see photos. 10" folded in half 100.00 - 1,000.00

**2067c (14) Vintage Household Products Packages**

(14) Vintage Household Products Packages includes Grey-Rock Brake Test Card with cord, Fels-Naptha Soap box, Fun-to-Wash Washing Powder box featuring "Mammy", Little Gem Flower Seeds package and display box, no seeds, box is torn, Blommer's Cream of Creams carton with eight sealed wooden spoons, Edgar's Household Powdered Mixture box, Paradise Root Beer Extract box, Hy-Zest Vanilla Extract box with product, and four boxes of Search Light Diamon Matches with product, all boxes show wear, tears, rips and stains, see photos.



12" x 8 1/2" (largest box) 100.00 - 1,000.00

LOT #

2079 Altoids Chewing Gum Vending Machine

Altoids Chewing Gum Vending Machine, features a clear cylinder globe to display product and a red branded base, operates with a coin mechanism set for \$0.25, floor standing, mostly plastic construction, standard "W" shaped key to open candy chamber, no key provided, however, back panel to the chamber and coin box was broken off and removed, fairly lightweight to transport, see photos.



51 1/2" x 14 1/2" x 16" 100.00 - 1,000.00

2089 Lot of 16: Assorted Vintage Coin Op & Advertising

1) Coin Op push slide plate mechanism for 5 cents, 10 cents, 25 cents. 4 1/2" W x 6 1/2" D

2) Two unused 10 cent gambling punch board, complete and in good condition. Black one is blank for advertising. 11 1/2" W x 12 1/2" H

3) 13 glass advertising glass plates. All in good condition. Includes glass and plexiglass bubble gum machine fronts. It includes 1 from Adams, 1 is blank, and 1 has a decal for 25 cents. The rest are for Chickle Treats and have Kiwanis decals. The plain plexiglass piece has a crack, see photos. Approx sizes 6" x 6" 100.00 - 1,000.00

**2096 Coin Op Coca Cola Vendo 59 "Spin Top" Machine**

A vendo model B59 C5 that looks fairly complete and original. Embossed on all sides. Has top coin mechanism, front cap catcher, top lift up door with handle, inside product carousel and the machine is on casters. There is no key and electric cord is damaged. The machine case is solid with some surface rust, scuffs, scratches, paint missing in areas throughout. There are some light dings and small dents. All four sides are nicely embossed. The cooling unit looks complete, but not tested. Overall fair condition. 31 1/2" wide x 45" high x 28" deep. NOTE: Pickup/transport required. Contacts available post auction. 1,000.00 - 10,000.00



NEW - Ghosted Goods Auction 6/11/2026

LOT #

2098 Holcomb & Hoke Popcorn Parts Machine

PRICE LOWERED! For parts or restoration. Vintage Holcomb & Hoke popcorn machine in a floor model wood and glass cabinet. There was a peanut roaster attached to the side but it is present. It is missing the lid for the seed bin on top and the oil dispenser assembly but otherwise seems to be mostly there. The cabinet and glass is all good. Overall measures 75" tall, 38" wide, 26" deep.



Note: Pickup/ Transport required. Contacts available post auction. 2,000.00 - 20,000.00

2099 Holcomb & Hoke Popcorn Machine Prototype 1912

PRICE LOWERED! Early Holcomb and Hoke machine - not complete, missing a few parts, untested.



Note: Pickup/ Transport required. Contacts available post auction. 1,000.00 - 10,000.00

2131 Bud Light Bar Pool Table Light

Bud Light Bar Pool Table Light, a 3D sign designed to hang overhead in a bar or "man cave", metal frame with applied "Bud Light" letters, small section of 'swirl' is cracked, textured blue plastic background, frame is rusted on ends, lights up, made need a new fluorescent bulb, 41" x 11", see photos. 200.00 - 2,000.00

**2142b Telefunken Opus Radio w/Bluetooth**

Collectible 1950s Telefunken Opus 7 vintage West German tube radio WITH BLUETOOTH. Tabletop radio showcases polished wood enclosure & ivory colored piano key inspired push bottom controls. FM AM Short & Long Wave. Very good overall condition with minor cosmetic imperfections associated with age and use. Highly sought after unit because of classic design and sound performance, multi speaker set up with electrostatic tweeters designed for superior sound quality. Must have for anyone in "the know" and Great Gift Idea. Please use photos to judge condition and bid accordingly. 600.00 - 10,000.00



LOT #

2151 Vintage Four-Wheel Horse Jog Cart

Vintage Four-Wheel Horse Jog Cart
Due to the size/weight/fragility of this item, it will require a pick up or customer-arranged 3rd-party shipping. We will connect you with reputable transport companies after the auction.



This is a robust and classic example of a vintage four-wheel jog cart or training cart, which serves as a predecessor and training counterpart to the modern two-wheel racing sulky. Unlike the pure racing sulky (or "bike"), these four-wheeled road or jog carts were designed for greater stability, durability, and comfort for the driver during long training or road work, rather than for race speed. The style suggests it dates from the early-to-mid 20th century. The construction utilizes a sturdy wooden body (with exposed weathered grain on the side panels) and a single-person seat, mounted atop a metal frame. It is outfitted with four wire-spoke wheels fitted with rubber tires, closely resembling early motorcycle or heavy bicycle wheels for their blend of lightness and durability. The long, tapered wooden shafts/yoke are characteristic for single-horse use. Pieces like this are highly sought after by collectors for their historical significance in the evolution of harness racing equipment and are ideal for barn or estate display. The cart is in well-used, rustic condition, exhibiting a charming, authentic patina. There is significant paint loss and flaking on both the wood body and the metal frame. The wooden elements show heavy weathering, cracking, and exposed grain. The metal frame and yoke have surface rust/patina throughout. The wheels appear structurally sound, but the rubber tires are visibly aged, cracked, worn and flat. H 36", W 48", D 122" (includes shafts). See photos.

400.00 - 4,000.00

2161 1970s Huffy Monoshock Children's BMX Bicycle

1970s Huffy adjustable "Monoshock" childrens BMX bicycle. Good overall condition, appears to be all original. Shows moderate age and wear including discoloration, scratches & oxidation. Qualifies as an excellent restoration candidate. Perfect addition to your collection, please use photos to judge condition and bid accordingly. 400.00 - 4,000.00



NEW - Ghosted Goods Auction 6/11/2026

LOT #**2163 Schwinn S-20 Full Suspension MTB**

This vintage Schwinn S-20 mountain bike is a notable example of late 1990s "Sweet Spot" suspension design, a technology that provided a unique feel for trail riding during that era. Constructed from an aluminum alloy custom blend frame, the bike is equipped with high-quality period components, including a RockShox front suspension fork and a Shimano Deore LX rear derailleur. The overall aesthetic is quintessential late-90s mountain biking, featuring the distinctive red finish and rugged geometry intended for off-road performance. The bicycle shows signs of age-appropriate wear, including minor paint chips, surface scratches on the frame, and some oxidation on mechanical components consistent with its vintage status. The tires and brake components show signs of normal usage. H 39", W 24", L 66". Please see photos for condition. Note: Pickup/Transport required. Contacts available post auction.



100.00 - 1,000.00

2166 Motobecane Inter Club Racing Bicycle

Vintage Motobécane Inter-Club Road Bike
This is a quintessential example of a French steel-frame road bicycle, specifically the "Inter-Club" model manufactured by Motobécane of Arras, France. Known for their balanced geometry and reliability, these mid-range bikes were a staple of the cycling boom, featuring lugs, a classic derailleur drivetrain, and a lightweight feel that enthusiasts still appreciate today. The frame is finished in a glossy black with distinctive red, white, and blue detailing, paired with alloy components including Weinmann brakes and SunTour derailleurs. The bike appears to be in very good, well-maintained vintage condition, exhibiting minimal signs of age-related wear, such as light surface scratches or minor patina on the metal components, consistent with careful storage and occasional use. H 39", W 69", D 18". Please see photos for condition. Note: Pickup/Transport required. Contacts available post auction.



200.00 - 10,000.00

LOT #**2167 Vintage "Damifino" Road Bicycle**

This is a quintessential example of a classic, hand-built steel-frame road bicycle, marked "Damifino" on the seat tube. A true enthusiast's machine, it is outfitted with a high-quality component mix, including Campagnolo headset and hub details, Suntour bar-end shifters, and Superbe brake calipers, reflecting a deliberate, performance-oriented build typical of serious cycling enthusiasts from the late 20th century. The frame features a striking blue finish, complemented by a leather-style saddle and vintage-style handlebar tape. It is equipped with Omega Strada Hardox rims and Panaracer Roll-y Pol-y tires, along with Christophe toe clips and pedals. The overall condition shows expected signs of use and age, including light surface rust on some metal components, minor paint chips, and general wear to the tape and saddle consistent with a well-ridden, vintage road bike. H 39", W 22", D 69". Please see photos for condition. Note: Pickup/Transport required. Contacts available post auction.



200.00 - 10,000.00

2168 Vintage Fuji Royale 12-Speed Road Bike

This Fuji Royale 12 speed Road Bicycle is a wonderful example of the quality steel-framed road bikes manufactured in Japan during the late 1970s or early 1980s. Constructed from Fuji's signature 441 Chrome Molybdenum steel tubing, this model was designed to offer a balance of durability and responsive handling, making it a classic choice for cycling aficionados. It is outfitted with period-correct components, including the reliable Fuji-VX derailleur system and Dia-Compe brakes, reflecting a high standard of craftsmanship for its era. Regarding its condition, the frame displays some cosmetic wear consistent with age, including minor surface imperfections and paint wear, yet it maintains its structural integrity; the drivetrain and brakes appear complete, though the mechanics have not been road-tested. H 39", W 18", D 67". Please see photos for condition. Note: Pickup/Transport required. Contacts available post auction.



200.00 - 10,000.00

NEW - Ghosted Goods Auction 6/11/2026

LOT #

2169 Vintage Jeunet Road Racing Bike

This classic vintage road bicycle, produced by the French manufacturer Jeunet in the historic cycling hub of Dole, France, embodies the aesthetic and functional charm of mid-to-late 20th-century European cycling. Featuring a signature orange finish with Olympic ring decals and the iconic lion-and-sun headbadge, this piece showcases period-correct components, including Simplex derailleurs, a steel lugged frame, and drop handlebars with textured black tape. The overall structural integrity appears sound, though the bicycle exhibits age-appropriate wear consistent with its vintage status, including surface oxidation on chrome components, minor paint chips and abrasions in the finish, and aged cables requiring maintenance.

Notably, the tires are currently not holding air and the bicycle remains untested. H 39", W 18", D 68". Please see photos for condition. Note: Pickup/ Transport required. Contacts available post auction. 200.00 - 10,000.00

**2170 Vintage Colnago Road Racing Bicycle**

This is a classic Italian-made racing machine, a true centerpiece for any vintage cycling enthusiast. The frame, bearing the iconic Colnago name, is expertly equipped with high-end Campagnolo components, representing the gold standard of that era's road racing technology. Key features include the Cinelli handlebars and stem setup, a classic "Turbo" saddle, and a full Campagnolo drivetrain and braking system. The bicycle appears to be a steel-frame road bike, likely manufactured in Italy during the height of the steel-frame era. Condition is consistent with age and use; the frame shows some cosmetic wear, including surface scratches and chips in the white finish. The components exhibit light oxidation typical of vintage steel parts, and the tires are currently not holding air and are untested. H 37", W 19", D 65". See photos for condition. Note: Pickup/ Transport required. Contacts available post auction. 200.00 - 10,000.00



LOT #

2171 Vintage Yellow Road Racing Bike

This eye-catching vintage road bike, finished in a striking yellow, is a classic example of Japanese cycling craftsmanship from the late 1970s or early 1980s. It features a robust steel frame paired with quality components of its era, including a SunTour Cyclone rear derailleur—highly regarded by enthusiasts for its precise, lightweight shifting—and a SR Apex crankset. The cockpit is outfitted with Sakae Custom "Road Champion" handlebars and Cane Creek brake levers, suggesting a well-loved machine that has been maintained and upgraded over the years with functional, period-appropriate parts. The bike is topped with a well-worn leather saddle, adding a touch of classic character. Overall, the bicycle appears to be in good vintage condition, with the paint showing typical signs of age-appropriate wear and light surface imperfections, consistent with its years of service; the drivetrain and components remain intact. While the current tires are holding air, they are untested for long-term use and should be inspected before any serious road testing. H 38", W 18", D 66". Please see photos for condition. Note: Pickup/ Transport required. Contacts available post auction. 200.00 - 10,000.00

**2172 Vintage Olmo Professionisti Racing Bike**

This classic Italian racing bicycle is a stunning example of mid-1980s craftsmanship from the renowned Olmo brand, based in Celle Ligure, Italy. Featuring a Columbus steel frame, the "Team 85" model embodies the elegant, utilitarian aesthetic of the era, complete with downtube shifters and a traditional geometry that collectors adore. The frame is finished in a clean, off-white hue with iconic Olmo branding and star decals on the fork crown, reflecting the period's focus on high-performance steel cycles. Objectively, the bicycle shows expected signs of age, including some surface wear to the components and frame, and the tires are currently not holding air and remain untested; the mechanical components would benefit from a thorough servicing. H 38", W 17", D 63". Please see photos for condition. Note: Pickup/ Transport required. Contacts available post auction. 200.00 - 10,000.00



NEW - Ghosted Goods Auction 6/11/2026

LOT #

2173 Vintage Bottecchia Road Bike

This is a classic Italian racing bicycle from the storied Bottecchia marque, representing a beautiful piece of mid-to-late 20th-century cycling heritage. The frame is adorned with decals celebrating "Campione del Mondo" (World Champion) status from 1966, alongside a decal indicating Italian championship wins from 1964 through 1967, reflecting the brand's immense pedigree in the professional peloton. It features a steel frame, Weinmann Vainqueur 999 center-pull brakes, and appears to be paired with a Campagnolo wheelset featuring Vento rims. The bike is equipped with a vintage-style pump mounted to the frame and an Origin8 quill stem. The overall condition shows signs of age and use consistent with a vintage bicycle, including various scratches, paint chips, surface wear, and patina on the components. The bike is currently pictured with one wheel removed. H 39", W 66", D 18".



This is a classic Italian racing bicycle from the storied Bottecchia marque, representing a beautiful piece of cycling heritage. The frame is adorned with decals celebrating "Campione del Mondo" (World Champion) status from 1966, a common tribute on these frames commemorating the victory by Felice Gimondi. It features a steel frame, Weinmann Vainqueur 999 center-pull brakes, and is fitted with an Origin8 Pro Fit saddle. The bike is equipped with a vintage-style pump mounted to the frame and retains both of its wheels. Please note a Vento wheelset is being offered as a separate lot in this auction. The overall condition shows signs of age and use consistent with a vintage bicycle, including various scratches, paint chips, surface wear, and patina on the components. H 39", W 66", D 18". Please see photos for condition. Note: Pickup/ Transport required. Contacts available post auction.

200.00 - 10,000.00

LOT #

2174 Vintage White Colnago Road Bike

This is a classic Italian-made Colnago road bicycle, a highly sought-after name in cycling history hailing from Cambiago, Italy. The frameset exhibits the quintessential lugged steel construction, complemented by a polished fork crown and high-quality Campagnolo components throughout, including the brakes, derailleurs, and headset. The aesthetic is period-correct, featuring a clean white finish with black Colnago branding and the iconic "Ace of Clubs" emblems on the head tube and seat tube. The bike is equipped with a WTB ProGel saddle and period-style downtube shifters, maintaining the vintage racing integrity of the era. The bicycle is in good vintage condition, though it displays some expected signs of age and use, such as minor paint wear. The tires are currently deflated and have not been tested for roadworthiness. H 35", W 65", D 18". Please see photos for condition. Note: Pickup/ Transport required. Contacts available post auction.



200.00 - 10,000.00

2175 Vintage Benotto Road Racing Bike

For collectors chasing the classic steel lines of Italian racing machines, seeing a Benotto in this condition is a genuine treat. Founded in 1931 by Giacinto Benotto in Turin, Italy, this brand represents a golden era of professional cycling, boasting 11 world championship titles. This particular example features the iconic metallic gold paint finish that made these frames instantly recognizable in the peloton, complemented by classic 3TTT handlebars and high-quality Campagnolo componentry, which was the gold standard for serious riders of the period. The bicycle is in good vintage condition, showing expected wear consistent with its age, including some minor surface blemishes, paint chips, and light oxidation typical of a well-preserved, authentic steel frame from this era. H 37", W 69", D 17". Please see photos for condition. Note: Pickup/ Transport required. Contacts available post auction.



200.00 - 10,000.00

NEW - Ghosted Goods Auction 6/11/2026

LOT #

2176 Vintage Francesco Moser Road Racing Bike

This classic Italian road machine is a stunning example of the craftsmanship associated with Francesco Moser, the legendary professional cyclist whose brand became synonymous with high-performance racing geometry in the late 20th century. Constructed with Columbus steel tubing, the frame features iconic lug work and the vibrant blue finish typical of this era, paired with a reliable Campagnolo drivetrain and 3ttt components. It is a true enthusiast's find, showcasing the blend of Italian art and mechanical precision that dominated the peloton for years. The bike shows typical signs of age, including surface scratches, some paint chips consistent with use, and light oxidation on various components, while the tires remain inflated but are untested and should be inspected before riding. H 39", W 65", D 17". Please see photos for condition. Note: Pickup/Transport required. Contacts available post auction.



200.00 - 10,000.00

2178 Vintage Tank-Style Cruiser Bicycle

This classic cruiser exudes the quintessential mid-century American aesthetic, characterized by its iconic "tank" frame design often associated with makers like Schwinn or Murray during the post-war era. The bike features a striking two-tone black and white paint scheme, a robust steel frame, and a comfortable sprung saddle, capturing the nostalgic spirit of balloon-tire bicycles. While the manufacturer remains unmarked, its design cues are unmistakable for enthusiasts of vintage Americana. Condition-wise, the bicycle shows expected signs of age, including potential paint wear and oxidation consistent with a survivor-grade piece. The tires are currently deflated and require air to verify their integrity, and the included headlamp—a functional-looking later addition—is currently untested and may require a new battery. H 36", W 25", D 68". Please see photos for condition. Note: Pickup/Transport required. Contacts available post auction.



100.00 - 1,000.00

LOT #

2179 Vintage Green Cruiser Bicycle

This is a classic mid-century American-style cruiser bicycle, featuring the iconic cantilever frame design that defined the post-war era of cycling. Built for comfort and style, these "balloon tire" cruisers were ubiquitous on suburban streets during the 1950s and 1960s, typically manufactured by companies like Schwinn, Murray, or Huffman. The bike sports a distinctive light green paint scheme, a springer-style fork, and a comfortable saddle, all hallmarks of the heavy-duty, utilitarian design of the time. The bicycle is in weathered, original condition; the frame shows significant paint loss, surface oxidation, and patina consistent with its age. The components, including the handlebars, pedals, and chain guard, show wear and surface rust. Note that the chain guard is currently loose and missing the rear mounting bolt, which attaches to the rear axle frame. The tires are currently unable to hold air and the mechanical functionality of the coaster brake is untested. H 38", W 20", D 66". Please see photos for condition. Note: Pickup/Transport required. Contacts available post auction.



80.00 - 1,000.00

2180 Vintage Girls' Custom Cruiser Bike

This distinctive vintage bicycle, built on a classic step-through girls' frame, exemplifies the mid-century American cruiser aesthetic. Likely a modified or custom-built piece from the mid-to-late 20th century, it features a robust steel frame, high-rise cruiser handlebars with blue grips, and a unique, extended flat-rear fender/rack combo that gives it a utilitarian yet custom silhouette. A striking feature of this build is the matching set of blue tires and corresponding blue valve stems, which provide a bold, stylized contrast to the weathered frame. The bike is equipped with a classic spring-loaded saddle. While the manufacturer is not explicitly branded, the construction reflects standard US-made bicycle geometry of that period. Condition is heavily weathered; the frame exhibits significant surface rust and oxidation throughout, and the chrome fenders show signs of aging, pitting, and material fatigue. Please note that the tires are untested and their ability to hold air is unknown. Despite the aesthetic wear, the frame appears



NEW - Ghosted Goods Auction 6/11/2026

LOT #

structurally sound for restoration or display purposes. H 42", W 26", D 68". Note: Pickup/ Transport required. Contacts available post auction.

50.00 - 1,000.00

2181 Vintage Cruiser Bicycle

This classic cruiser is a fantastic candidate for a restoration project, capturing the quintessential aesthetic of mid-century Americana. Featuring a robust, double-bar frame design and equipped with a substantial rear cargo rack and a protective chain guard, this machine is built with the heavy-duty steel construction characteristic of early-to-mid 20th-century bicycles.

While the manufacturer remains unidentified, the silhouette and utilitarian components suggest a classic American-made cruiser, possibly from the era when these bikes were staples for neighborhood commuting and utility. Condition is consistent with age and long-term storage; the frame shows significant surface oxidation and patina throughout, and the tires are currently deflated and will require replacement. The bicycle is being sold in untested, "as-is" condition. H 37", W 26", D 69". Please see photos for condition. Note: Pickup/ Transport required. Contacts available post auction.

100.00 - 1,000.00

**LOT #****2208 Nautical Maritime 1-Sheave Block and Pulley**

Nautical Maritime Block and Pulley, a sturdy wood block casing, cast iron or steel sheave and a large metal hook, used for heavy-duty lifting on ships or in shipyards, 24" x 7", heavy, weighs 40lbs! See photos. Highly sought after nautical-themed decor!

400.00 - 4,000.00

**2211 Maritime Beacon & Glass Float Display**

This maritime grouping features two mid-century Australian BGE "Life-Light" emergency buoy beacons and a large 10-inch hand-blown green glass fishing float, all mounted on a custom-fabricated black metal display stand. The stand is designed with a tiered, industrial aesthetic, featuring three vertical supports on a rectangular base to elevate the beacons and cradle the glass float in its original knotted hemp netting. The BGE lights, marked Patent No. 116271, retain their heavy cylindrical bodies and ribbed glass fresnel lenses, showing authentic surface oxidation and paint wear from sea service. The metal stand shows minor surface scuffs and paint chips consistent with supporting heavy industrial objects. The overall set remains in robust, display-ready condition with all glass components appearing intact. H 36", W 14", D 10" 300.00 - 3,000.00

**2205 (3) Nautical USN Bumper, Barn Pulley, Fish Decor**

(3) Nautical USN Bumper, Pulley, Fish Sculpture includes a vintage Civil War-era US Navy leather "pudding" bumper or fender, used to protect small boats from impact against ships or docks, cork-filled for buoyancy, embossed design with USN in center on both sides, 5.5", hand-carved and painted wooden fish sculpture with hinged tail, folk art or rustic coastal decor, 12.5" long, and a pulley block and tackle, used on farms for lifting hay into lofts, distressed wood and iron hardware, 6", see photos. 100.00 - 1,000.00

**2212 Western Block Co Ship Wheel & Tackle**

This is a premier maritime collection featuring a large 43" diameter wooden ship's steering wheel with eight spokes and turned handles extending to a 57" total width. The provenance is anchored by a wooden tackle block bearing a cast-metal "Anvil Brand" medallion from the Western Block Company of Lockport, New York. This comprehensive lot includes a 34" modern 4x4 timber mounting post with a heavy steel threaded axle for upright display, a wooden caulking mallet, and a secondary turned handle. The rigging is substantial, consisting of 3/4" diameter natural fiber rope in three distinct sections: a primary 50' length attached to the tackle, a 7' length with looped ends, and a 52" section featuring an integrated metal eye loop hardware piece. The wooden elements



NEW - Ghosted Goods Auction 6/11/2026

LOT

exhibit a beautiful, warm patina with minor surface scuffs and age-appropriate drying cracks, while the metal components show light, stable oxidation. H 57", W 57", D 12"
Note: Pickup/Transport required. Contacts available post auction. 1,000.00 - 10,000.00

2213 WWII 1944 Lionel Corp. Type MBF Naval Binnacle

This is a museum-quality 1944 Type MBF Compensating Binnacle, manufactured by the Lionel Corporation, New York (Serial No. 14051). While the world knows Lionel for toy trains, during WWII, they were a primary contractor for the U.S. Navy Bureau of Ships. This specific unit likely saw service on a mid-sized auxiliary vessel, such as a Victory ship, LST (Landing Ship Tank), or Destroyer Escort, which were heavily commissioned in 1944. The binnacle features its original liquid-filled compass, a protective polished brass hood with a sliding door, and the iconic "Kelvin's Balls" (quadrantal correctors) mounted on adjustable armatures. The mahogany-finished wood pedestal is exceptionally preserved, and the clear engraving on the compass bezel confirms its wartime manufacture. The unit has been retrofitted with internal lighting for display purposes; however, the wiring should be inspected by a professional before use. The item is in excellent vintage condition with an attractive aged patina on the brass and only minor surface wear to the wooden base. H 54", W 32", D 17". Please see photos. 5,000.00 - 50,000.00

**2214 Chadburns Liverpool Brass Winch Telegraph**

This is a rare and specialized maritime instrument from the world-renowned Chadburns (Liverpool) Ltd. While most telegraphs are for propulsion, this is a winch or windlass telegraph, identifiable by its unique command dial featuring "1 STROKE," "2 STROKES," "HAUL," and "VEER." These commands were used to communicate precise, incremental movements to deck crews during anchoring or cargo handling. The unit features a double-faced polished brass head on a classic flared pedestal. The serial number 50574 is expertly fired into the enamel dial—a hallmark of authentic early-to-mid 20th-century production. Internal inspection shows the column is hollow and the original mechanical linkage chains are missing. One enamel dial face is in good condition, while



LOT

the reverse side is significantly damaged with a large black blemish or loss of material obscuring several commands. The brass shows authentic surface wear, scratches, and oxidation consistent with its seafaring history. H 44", W 11", D 11"
Please see photos.

Note: Pickup/Transport required. Contacts available post auction. 3,000.00 - 30,000.00

2221 Union Switch & Signal RR Vane Line Relay Control

Vintage Union Switch & Signal railroad vane line relay train track control. Missing bottom lid with un-cracked glass. Please use photos to judge condition and bid accordingly. 80.00 - 800.00

**2223 Dietz Union Kerosene Driving Lamp**

Dietz Union Kerosene Driving Lamp used on carriages or early automobiles, produced around the 1890s to early 1900s, metal body with a good, glass lens, dent in the back, includes a burner for kerosene fuel and a handle for carrying, see photos. 200.00 - 2,000.00

**2224 Dietz Black/Brass Kerosene Driving Lamp**

Dietz Black/Brass Driving Lamp, early 1900s, kerosene driving lamp designed for carriages and early automobiles, black enameled metal body with brass trim around lens, minor dents and dings, 9.5", good condition, see photos. 200.00 - 2,000.00

**2225 Dietz Boston/Maine Railroad Lantern**

Dietz Boston/Maine Railroad Lantern, Vesta model, clear glass globe, brim embossed with "Boston & Maine", used for signaling rather than just lighting, good condition, see photos. 200.00 - 2,000.00



NEW - Ghosted Goods Auction 6/11/2026

LOT #**2226 Dietz Monarch Kerosene Lantern**

Dietz Monarch Kerosene Lantern, metal body with a "Dietz Fitzall" clear glass globe, embossed with "Dietz Monarch", produced by the RE Dietz Co, Syracuse, NY, 13", good condition, see photos.

200.00 - 2,000.00

**2232 Boston & Albany RR Co Cancelled Bond Certificate**

Boston & Albany RR Co Cancelled Bond Certificate, specifically a "First Mortgage Bond" dated 1898, \$1000 cancelled bond certificate carries no value, nice historical collectible or artwork, cancelled with red stamp and put in plastic for preservation, 14.5" x 15", good condition, see photos.

100.00 - 1,000.00

**2235 Winchester Cartridge Series Pocketknife**

Winchester Collector Products includes a Winchester Cartridge Series Reverse Gunstock Stag model pocketknife, part of a limited edition series, model number 35081-S featuring three blades, main blade etched with "Winchester", 3.5" long when closed 200.00 - 2,000.00

**2236 (5) Winchester Collector Products**

Winchester Collector Products includes a brass Winchester numbered token, likely used as a company scrip or a colliery check tag in the mining industry, a vintage-style Winchester Repeating Arms pocket watch fob, advertising souvenir, a vintage green marble celluloid fountain pen and pencil set featuring the words "Winchester" on the clip, tip of pencil does not stay secure, marked "Merrill D Rinker" on both, and a Winchester Retail Print List from 1954, see photos. 200.00 - 2,000.00

**LOT #****2238 (3) Winchester Collector Products**

(3) Winchester Collector Products includes a 17.5" carbon steel butcher's knife, curved blade, stamped "Winchester", a vintage honing steel, sharpening steel, ribbed wooden handle stamped "Winchester", 17", and a vintage round-nose slicer or butcher knife, stamped "Winchester, 8.5", see photos. 200.00 - 2,000.00

**2241 Vintage Arnold Steam Sterilizer**

Vintage Arnold Steam Sterilizer, produced by Wilmot Castle & Co, originally patented as a grain steamer, but was widely used for sterilizing medical, dental and laboratory instruments, features a cylindrical cover embossed with "The Arnold Steam Sterilizer Pat. May 9, 1882", consists of a large tin cover that fits over an inner chamber, all sitting within a water-filled basin, a critical tool for preventing the spread of diseases like typhoid and tuberculosis through contaminated milk, good condition, see photos.

From the Dale Beeks Collection 200.00 - 2,000.00

**2243 Antique Patent-Elastique Saddler's Sewing Machine**

Antique Patent-Elastique Saddler's Sewing Machine, made by Emile James of New York circa 1900, Politype No. 4 is a rarer German-made machine specifically designed for professional cobblers and leather makers for sewing shoes and saddles, features a universal feed allowing it to sew in any direction without rotating the workpiece, functions through a foot treadle or a hand crank, specially adapted for steam power to handle boot repairs and heavy leather work, no breaks or repairs to the castings, retains most of its original paint, works well both by hand crank and treadle operation, overall very good condition, see photos. Highly sought-after by leather artisans and decorative industrial collectors.



Serial No.207119.

44" tall, 33" wide, 17" deep.

Note: Pickup/transport required. Contacts available post auction. 1,000.00 - 10,000.00

NEW - Ghosted Goods Auction 6/11/2026

LOT #

2248 Vintage MacPherson Pin-Up Calendars 1950,1951,1953

This trio of "MacPherson Sketchbook" calendars—for 1950, 1951, and 1953—serves as a collection of post-war promotional advertising produced for the Military Grill in Kenmore, New York. These calendars feature the work of Earl MacPherson (1910–1993), an Oklahoma-born illustrator who rose to prominence during the golden age of pin-up art. After studying at the Chouinard School of Art in Los Angeles and painting portraits in Honolulu, MacPherson developed his signature "Artist's Sketch Pad" style—a format featuring a central pin-up figure surrounded by smaller sketches showing the preparatory process. While his career was famously interrupted in 1951 by a bout with polio, during which his assistant Jerry Thompson continued the series, these items remain iconic examples of his lighthearted, "girl-next-door" aesthetic and collaborative commercial advertising. The items exhibit typical signs of long-term storage, including paper foxing, minor edge wear, and various surface blemishes consistent with their age. The 1953 cover includes remnants of a blue rubber band that has adhered to the surface. H 12.5", W 9.5", D 0.25" Please see photos for condition.

500.00 - 10,000.00



LOT #

300.00 - 10,000.00

2249a 1948 Esquire & 1949 Varga Calendars

This collection features two iconic examples of mid-century American calendar art, both complete and in very good overall condition. Included is a 1948 Esquire "Glamour Gallery" wall calendar featuring the quintessential "Varga Girl" aesthetic, complete with an insightful "Essay on Jiggling," alongside a 1949 Varga calendar. The "Essay on Jiggling," featured in the 1948 Esquire calendar, is a fascinating artifact of mid-century cultural commentary. Written by George A. McNamara, the essay is a tongue-in-cheek sociological observation of the "post-war American female" and the phenomenon of movement, grace, and vitality as viewed through the prism of the era's pin-up culture. These pieces are quintessential examples of the pin-up art movement that dominated the era, showcasing the work of legendary artists associated with Esquire magazine in Chicago. The paper stock remains bright with minimal foxing and only minor handling marks consistent with age; notably, the original hanging holes appear undisturbed, suggesting these were likely never displayed or only used for a very short duration. H 12.25", W 8.5", D 0.25" Please see photos for condition.

300.00 - 10,000.00

**2249 1947 George Petty & 1948 Esquire Glamour Calendar**

These two quintessential pieces of mid-century Americana feature the iconic artistry of George Petty and Joe De Mers, showcasing the celebrated "Esquire Girl" aesthetic that defined the era. The 1948 Esquire "Glamour Gallery" calendar includes the "Essay on Jiggling" by George J. McNamara, which frames the "jiggle" as a complex, almost scientific cultural phenomenon. In contrast, the 1947 Petty pin-up calendar focuses exclusively on the visual impact of the artwork, notably omitting the thematic verse or witty prose found on many other contemporary calendar pages. Condition-wise, both calendars remain structurally sound and free of significant tears or creases; however, they exhibit expected signs of age, including instances of foxing and minor blemishes consistent with long-term vintage storage. 1948 Calendar: H 12", W 8.25", D 0.25". 1947 Calendar: H 12.25", W 9", D 0.25". Please see photos for condition.

**2250 Vintage Esquire Girl Pin-Up Calendar 1946, 1947**

These iconic "Esquire Girl" pin-up calendars from 1946 and 1947 represent the golden era of American mid-century illustration, famously showcasing the alluring artwork of the legendary Alberto Vargas. These calendars are highly collectible artifacts of post-war pop culture, featuring the distinctive, soft-focus airbrushed style that defined the Esquire aesthetic during this period. The 1946 calendar, published by Esquire, Inc. in Chicago, continues the charming tradition of including monthly verses or poems accompanying each illustration, a delightful feature that was subsequently phased out in the 1947 edition, which transitioned to a landscape layout. Both calendars are complete; however, they exhibit expected age-related wear, including some handling creases, surface blemishes, and minor discoloration on the pages and covers. Notably, the hanging holes remain in good



NEW - Ghosted Goods Auction 6/11/2026

LOT #

condition, suggesting they were likely not utilized for long-term wall display. The year "1946" is written in pen on the back of the 1946 calendar. 1946 Calendar: H 12.25", W 8.5", D 0.25"; 1947 Calendar: H 8.75", W 12", D 0.25". Please see photos for condition. 300.00 - 10,000.00

2250a Vintage Esquire Varga Pin-Up Calendars 1943, 1945

These two vintage Esquire Varga calendars serve as poignant bookends to the American war effort during the 1940s. The 1943 edition, released as the country was fully mobilizing, and the 1945 edition, capturing the final months of conflict, represent the intersection of homefront morale and the iconic "Varga Girl" artistry.

The monthly poems within these calendars provide a distinct historical lens, frequently referencing wartime service, civilian contributions, and the personal anxieties of the era. Many of the illustrated women are depicted wearing the uniforms of various military service branches or sporting military medals, emphasizing the deep connection between the domestic homefront and the global theater of war.

Both pieces are exceptionally well-preserved, suggesting they were carefully kept as keepsakes rather than used as functional wall calendars. The wire-o plastic spiral bindings are complete, and the hanging holes show no signs of structural stress or usage. Objectively, both are in very good condition with only minor, expected corner bumps. Please note that the 1945 calendar correctly identifies itself, whereas the 1943 edition features an incorrect, handwritten "1954" annotation on the reverse. H 12.25", W 12", D 0.5" Please see photos for condition.

300.00 - 10,000.00



LOT #

2283 Big Foot Gentleman's Club Sign

This is the sign from the notorious Bigfoot Gentlemen's Club in Rockford Illinois which closed in 2024. You can Google it and get all the dirt. This is a vacu-form plexiglass sign with applied vinyl graphics, measures 12' x 5' 2" x 4"



Note: Pickup/ Transport required. Contacts available post auction. 400.00 - 4,000.00

2294 Lot of 3: Vintage Handbags

The large blue bag is marked Guild, the other 2 bags appear to be unmarked. Some slight cleaning required on the light blue piece, more dust than staining. Wear to the leather on the smallest bag. The largest bag (gold/bronze color) has a couple stitches missing on the interior change purse.

200.00 - 300.00

**2295 Luxurious Vintage Red Fox Fur Coat & Ear Muffs**

Luxurious Vintage Red Fox Fur satin lined jacket from York Furrier Elmhurst IL. Very good to good overall condition small "tear" on seam connecting to liner (needs to sewn shut) near right under arm and along sleeve. Presents extremely well and is constructed of premium red fox pelts exemplifying voluminous fluffy warm tan to golden to silvery grey tones gradient. Some age and wear; 36" length, 18" shoulder to shoulder, 16" armpit to sleeve with "BSL" monogram with floral design on the internal lining. Accented perfectly with matching fur ear muffs, the BEST way to combat those winter months !!! Perfect addition to your collection, please use photos to judge condition and bid accordingly. 600.00 - 6,000.00

**2269 Barton's Shoe Paste Advertising Sign**

Barton's Shoe Paste Advertising Sign, manufactured by the Barton MFG Co, St. Louis, MO, 1930s/40s, 10-cent shoe paste ad highlights that it cleans, oils and shines, gained significant fame as their products were used by service men during WWI and WWII, single-sided cardboard sign with age-related rips and tears along edges, some creases and cracks, see photos.

19" x 28" 100.00 - 1,000.00

**2296 (2) Art Deco Dress Stands**

Pair of matching Art Deco coat or dress racks used in a clothing or department store. Made of formed iron square stock and a cast base. Height adjusts from 54" to 77" tall. Gold tone finish is worn. 500.00 - 10,000.00



NEW - Ghosted Goods Auction 6/11/2026

LOT #

2297 Full-Body "Egghead" Mannequin on Stand

Full-Body "Egghead" Mannequin on Stand, typically used for retail clothing displays, sleek, glossy white, plastic or fiberglass, featureless, minimalist form with a standard upright pose mounted on a metal base, has distinctive small blue sailboat decal on left shoulder, approximately 76" tall, see photos.



NO SHIPPING! - PICKUP OR THIRD PARTY TRANSPORT ONLY 100.00 - 1,000.00

2300 Reed & Barton #3135 Silver Plated 5.5" Creamer

Vintage Reed & Barton #3135 Victorian themed hammered silver plate 5.5" creamer. Presents well with minimal signs of age and wear. Please use photos to judge condition and bid accordingly. 80.00 - 10,000.00

**2301 (10) Piece Silver Plate Holloware Collection**

Collection of (10) assorted silver plate holloware from makers such as Gorham, Oneida, Webster Wilcox, Gallia and more; tallest pot is 9.5' tall. Perfect additions to your collection, please use photos to judge condition and bid accordingly. 80.00 - 10,000.00

**2305 Pair of Ornatly Etched Silver Plated Serving Tray**

Pair of ornately etched silver plated handled serving trays; 31.5" is footed & 25.5" shows Community Georgian stamping. Perfect addition to your collection, please use photos to judge condition and bid accordingly. 100.00 - 1,000.00

**2310 German Reservist Beer Stein - Dragoon 14**

This exceptional porcelain reservist stein commemorates the service of a "Kurmärkischer Reiter" (Markish Rider) in the 2nd Escadron of the Kurmärkisches Dragoner-Regiment Nr. 14, stationed in Colmar between 1902 and 1905. The vessel features vibrant, multi-colored transfers depicting scenes of cavalry life and a sentimental farewell, flanked by a comprehensive roster of "Reservisten"



LOT #

names. The ornate pewter lid is a highlight, topped with a majestic eagle finial and a lion-form thumb lift, typical of the high-quality craftsmanship found in Imperial German military memorabilia. While the porcelain body remains visually striking with no loss to the decorative surface, there is a small hairline crack visible on the interior that does not appear to penetrate to the exterior. H 11.5", W 5.5", D 4.25". Please see photos for condition. 300.00 - 3,000.00

2353 Lighted Curio Cabinet

Contemporary but well made tall curio cabinet / showcase. Solid mahogany case has fluted columns on the front corners, a cornice top, beveled glass front, mirror back, glass entry doors on both sides, recessed lighting, and 4 heavy 5/16" plate glass shelves with a ground channel for displaying plates. In VG condition. Overall measures 80.5" tall, 42" wide, 16.75" deep. Actual showcase interior 36" wide 12" deep. No shipping on this item. Customer pickup or 3rd party transport required. Contacts available post auction. 500.00 - 10,000.00

**2357 Antique Ansonia Gingerbread Clock Pair**

This striking pair of "Gingerbread" or kitchen clocks represents the pinnacle of late 19th-century American domestic horology, likely produced by the renowned Ansonia Clock Co. of New York. The darker clock features a heavily pressed wood case with intricate floral and geometric motifs, while the lighter oak-toned clock displays classic Victorian grape and leaf carvings. Both retain their original reverse-painted decorated glass tablets, which remain in remarkable condition without cracks or detrimental damage. Internally, the lighter clock features a fascinating "A" trademarked pendulum with a speed adjustment gauge and an alarm bell mechanism. Physically, the darker clock is missing its minute hand and requires its dial to be reset to the original position. Both units show expected surface wear, minor wood scuffs, and some finish loss to the rear panels, and while the alarm on one still rings, both movements are currently non-operational and require a professional servicing to return to their former glory. Darker Clock: H 23.75", W 14.75", D 5". Lighter Clock: H 24.5", W



LOT #

15", D 5". Please see photos for condition.
 Note: Pickup/ Transport required. Contacts
 available post auction.
 200.00 - 10,000.00

2360 Holtzer-Cabot Industrial Wall Clock

Holtzer-Cabot Brass Industrial Wall Clock, likely dating from early 20th Century, commonly used in schools, factories and public buildings, Holtzer-Cabot Electric Company, Boston, MA, features a sturdy metal case with a glass face, brass-colored frame, cream-colored dial and bold numerals, repurposed with a modern electric movement, cord in good shape, but the hands are loose, untested, otherwise, good condition, see photos. 200.00 - 2,000.00

**2361 Octagon Schoolhouse Regulator Wall Clock**

This is a classic schoolhouse-style regulator wall clock, featuring a handsome octagonal oak-finished case and a glass-front pendulum door accented with "Regulator" gold-tone lettering. The timepiece utilizes a spring-driven movement with a white dial displaying Roman numerals and an inner minute track. While reminiscent of late 19th-century American designs by manufacturers like Seth Thomas or Ansonia, the "China" marking on the dial indicates this is a modern reproduction designed for functional decor. The piece remains in good operational condition and includes its original winding key. Visually, the wood case shows minimal wear with some very light surface scratches and minor oxidation on the metal pendulum bob, but it maintains a clean and polished appearance overall. H 31", W 17.5", D 6". Please see photos for condition.



Note: Pickup/ Transport required. Contacts available post auction. 200.00 - 2,000.00

2363 1800s R. Davies & Son Grandfather Clock

Beautiful mahogany case grandfather clock made by Robert Davies & Son of 30 High Street, Blaenau Ffestiniog, Gwynedd, Wales. Born 1821, into a wealthy land-owning family in Caernarfon, Wales, Robert Davies served his horological apprenticeship under Arthur Bryers, of Eastgate Street Row, Chester. By 1841, Davies had set-up his own watch

**LOT #**

making business in Blaenau Ffestiniog and by 1871, had been joined by his son Richard Joseph Davies. Hence the business became known as 'Robert Davies & Son. The beautiful mahogany case with flame grain panels is in exceptional condition with an older professional refinish and features twist columns on both front sides and a arched scroll pediment on the bonnet. The hand painted face and dial depicts an elderly gentleman in robes and sandals seated near a stream. Two cast iron weights drive the time and date dial with the clock striking on the hour. Measures 90" tall, 24" wide, 11" deep. Runs intermittently, will need servicing.

Note: Pickup/ Transport required. Contacts available post auction. 1,000.00 - 10,000.00

2364 Antique Seth Thomas Patriotic Wall Clock

This handsome 19th-century mahogany veneer shelf clock represents the timeless craftsmanship of Seth Thomas of Thomaston, Connecticut. Featuring an elegant style with dual gilded side columns and a striking reverse-painted glass lower tablet depicting a patriotic American eagle and shield, this piece is a classic example of Americana. The brass movement is housed behind a hand-painted dial with floral spandrels and Roman numerals. This specimen is fully operational, chiming on the hour, and retains its original winding key. The interior features a remarkably clear paper manufacturer's label and the backboard bears historical chalk signatures from past owners or smiths. The case shows age-appropriate wear including veneer chipping on the top and base, minor fading to the gilded accents, and scuffs on the finish; the dial and tablet show light crazing and minor paint loss, though the glass remains intact. H 25.5", W 15", D 4.5". Please see photos for condition. Note: Pickup/ Transport required. Contacts available post auction. 500.00 - 10,000.00

**2364a Seth Thomas Empire Column Mantel Clock**

This striking Seth Thomas Empire-style mantel clock, produced in Thomaston, Conn., features a rich rosewood-veneered case flanked by bold black columns with gold-toned capitals and bases. The original painted metal dial is adorned with floral corner motifs and centered with a visible



LOT #

brass movement stamped "S. Thomas, Plymouth, Conn. U.S.A." The lower glass tablet depicts a charming gilt-stenciled scene of a woman and a lamb. Included is a brass winding key. Physically, the veneer shows some light wear and minor lifting consistent with age, and the interior paper label is partially torn but still clearly displays the maker's marks. Notably, the weights and wooden pulley covers are missing, and the original cables have been replaced with monofilament line; consequently, the movement is untested and requires professional servicing to ensure functional operation. All glass panels remain free of cracks. H 25.25", W 15", D 4.5". Please see photos for condition. Note: Pickup/ Transport required. Contacts available post auction. 350.00 - 10,000.00

2365a Vintage Aladdin Electric Oil Lamp

Vintage Aladdin Electric Oil Lamp, Mantle Lamp Co, floral decorated shade over a "Lincoln Drape", white glass base, includes a glass chimney and a metal burner assembly, no chips or cracks, lights up and works, good condition, see photos. 25" tall 200.00 - 2,000.00

**2372 Antique Slag Glass Overlay Floor Lamp**

This striking early 20th-century floor lamp features a large, eight-sided slag glass shade characterized by warm caramel and sky blue marbled tones. The shade is further enhanced by ornate, Classical-style metal filigree overlays displaying floral swags and a decorative pierced crown. Supported by a tall, tapered wooden column, this piece reflects the transition from the Arts and Crafts era into more decorative Edwardian styles.



The glass panels appear intact with no major cracks visible, though the metalwork shows a significant aged patina and surface oxidation. The wooden base exhibits noticeable scuffing, scratches, and finish wear consistent with heavy use. There is a significant large crack and gap in the domed metal cap that sits directly above the top of the wooden post, representing a critical structural flaw. Additionally, the ball pull-chains for the dual-socket cluster are incomplete or cut, and the unit does not currently function and requires professional rewiring.

LOT #

Dimensions: H 70", W 20.75", D 14". Please see photos for condition. Note: Pickup/ Transport required. Contacts available post auction. 400.00 - 10,000.00

2372a Tiffany-Style Slag Glass Hanging Lamp

Tiffany-Style Slag Glass Hanging Lamp, vintage lotus swag lamp featuring a tulip-shaped shade made of warm honey-colored glass panels, held in a metal frame, no cracks in glass panels, has five light bulb sockets, needs to be re-wired, good condition, see photos. 25" diameter



NOTE: Pickup/transport required. Contacts available post auction. 400.00 - 4,000.00

2376 Bradley & Hubbard Brass Kerosene Lamp

Bradley & Hubbard Brass Kerosene Lamp features an ornate, embossed brass base and reservoir with a glass chimney, highly detailed floral design, "B&H" stamped on the lid, three curved metal arms designed to hold a large shade which is currently missing, very good condition, see photos. 20 1/2" tall 100.00 - 1,000.00

**2378 Large Leaded Glass Screen or Headboard**

A contemporary-made piece features 3 leaded glass panels mounted in a wood frame. Was currently being used as a bed headboard but could also be used as a screen or divider. Glass has a floral / geometric design on a caramel slag glass field. In good condition. Measures 88"wide, 47" tall.



Note: Pickup/ Transport required. Contacts available post auction. 100.00 - 1,000.00

2379 Victorian Stained Glass Window Orig Oak Sash

A fine Victorian-era stained glass window, c. 1890-1910, featuring a multi-color geometric design with slag glass borders and amber glass jewels. Housed in its original 1.75-inch thick oak sash. Excellent structural condition with vibrant cathedral glass panels. The craftsmanship and material choice suggest it was likely a transom or a decorative accent window from a residential home. H 16" w 34". Please see photos for condition. Note: Pickup/ Transport required.



NEW - Ghosted Goods Auction 6/11/2026

LOT #

400.00 - 10,000.00

2380 Antique Louis XIII Inspired Baroque Wooden Chair

Handsome antique Louis XIII inspired upholstered Kings armchair. Attractive Baroque arm chair featuring solid oak construction with remarkable carved acanthus leaf details. Very good overall condition with minimal signs of age and wear; presents extremely well.

Approximately 51"t x 22"d x 24"l, perfect addition to your household. Please use photos to judge condition and bid accordingly.

NOTE: Pickup/transport required. Contacts available post auction. 500.00 - 10,000.00

**2380a Victorian Rococo Revival Side Chairs, Pair**

This pair of mid-19th-century side chairs is a quintessential example of the American Rococo Revival style, likely produced between 1850 and 1870. Crafted from a dark-toned hardwood consistent with rosewood or premium mahogany, the chairs feature elaborate, pierce-carved crest rails showcasing deep C-scrolls, floral flourishes, and a central cartouche. They are upholstered in a rose-colored velvet with gimp trim and supported by elegant cabriole legs. These chairs are in fair to good antique condition; the wood displays a warm, aged patina with minor scuffs and surface wear, and the velvet shows typical crushing and fading. Notably, the right rear leg of one chair is loose at the joint and requires re-gluing or professional securing, and the underside dust covers exhibit significant fraying. H 42.75", W 22", D 24". Please see photos for condition. Note: Pickup/ Transport required. Contacts available post auction.

200.00 - 10,000.00

**2381a Rocking Chair**

This charming piece is a classic American ladder-back child's rocking chair, likely dating from the early to mid-20th century. It features a traditional three-slat back design with elegant turned finials and a hand-woven rush (or seagrass) seat, showcasing the timeless appeal of Early American country styling. The warm, honey-toned wood appears to be maple or birch, a staple for durable domestic



LOT #

furniture of this era. Condition is good for its age, showing honest wear to the rockers, minor scuffs on the frame, and light fraying on the rush seat, particularly at the front edge. H 33", W 18", D 28". Please see photos for condition. Note: Pickup/ Transport required. Contacts available post auction.

80.00 - 1,000.00

2383 Antique Mission Oak Dining Chair

This is a striking example of an American Arts and Crafts or Mission style dining chair, likely dating from the early 20th century, circa 1900-1920s. The chair is crafted from what appears to be Quarter Sawn Oak, which exhibits a beautiful ray-flake grain, characteristic of high-quality Mission furniture. The straight, simple lines, vertically-slatted back (four slats), and solid, slightly saddled seat are all hallmarks of the style popularized by companies like Stickley and Limbert. The finish is a deep, rich brown, consistent with fumed or stained oak of the period. Visible condition shows typical wear for its age, including minor surface scratches and indentations on the seat and legs, a consistent, aged patina, and visible signs of where the seat frame meets the rear stiles. The close-up of the crest rail attachment shows exposed wood plugs or dowel ends, common joinery of the era. Overall, a structurally sound piece with handsome grain. H 37.5", W 15", D 15"

Note: Pickup/Transport required. Contacts available post auction. 100.00 - 1,000.00

**2387 Pulaski Oak Press-Back Side Chair**

This solid oak press-back side chair was produced by the Pulaski Furniture Corporation at their Plant #1. A fine example of the late 19th-century revival style, it features ornate "pressed" carvings on the top rail showcasing scrolled and sunburst motifs, complemented by a backrest of traditional turned spindles. The seat consists of a classic woven cane panel set into the oak frame. The chair has been structurally reinforced for continued utility, including a wooden board mounted beneath the woven cane seat and wooden "side hugger" brackets secured with contemporary screw bolts. The piece is in good overall condition, exhibiting expected surface scuffs and finish wear on the legs and spindles, light fraying to the woven



NEW - Ghosted Goods Auction 6/11/2026

LOT #

cane, and a small split in the wood frame near the rear spindle attachment. H 40.5", W 21", D 20". Please see photos for condition. Note: Pickup/ Transport required. Contacts available post auction. 80.00 - 1,000.00

2389 Antique GE Cast Iron Ornamental Fan

This early 20th-century General Electric ceiling fan is a premier example of industrial artistry, featuring a heavy cast iron motor housing finished in black and adorned with an exquisite raised gold-tone oak leaf and acorn motif. The manufacturer's brass plate identifies this as an Alternating Current Fan Motor, Model 322068, produced by General Electric in Fort Wayne, Indiana. The lot includes the central motor assembly with a decorative bell-shaped canopy and four rich mahogany-finished wood blades with their original iron mounting brackets. As a specialist in mechanical Americana, I find the preservation of the ornate "Gilded Age" lattice-work housing to be particularly impressive. The item is in good vintage condition; the motor housing shows minor paint loss and surface dust, while the gold accents remain vibrant. The wooden blades exhibit light scuffing and edge wear typical of age, and the original wiring is present but untested and will require professional inspection. H 25", W 12.5", D 12.5". Please see photos for condition. Note: Pickup/ Transport required. 1,500.00 - 10,000.00

**LOT #**

evidence of structural stress and heavy historic repair, including visible adhesive and wood filler at the leg joints, and the tabletop rim has several small chips and scuffs consistent with long-term use. H 28", W 30", D 21.25". Please see photos for condition. Note: Pickup/Transport required. Contacts available post auction. 400.00 - 4,000.00

2392 Victorian Walnut Ext. Dining Table W/7 Inserts

This impressive Victorian-era banquet table showcases the ingenuity of 19th-century furniture design, featuring a robust split-pedestal base with architectural scrolled feet on casters and elegant burl walnut diamond inlays along the apron. The primary construction is walnut with a rich, warm patina, supported by a heavy-duty internal wooden sliding rail system designed to accommodate the seven included 10-inch wide matching leaf inserts. It is a versatile piece of "statement" furniture that transitions from an intimate table to a grand banquet surface extending to over 9 feet. Condition is good for its age, showing typical surface wear including scattered scratches, minor scuffs to the finish on the tabletop, and some expected nicks to the base and feet; the leaves are currently unfinished on the undersides, see photos.



29.5" x 42" x 112"

Note: Pickup/ Transport required. Contacts available post auction. 1,000.00 - 10,000.00

2391 Victorian Chinoiserie Floral Tilt-Top Table

This striking Victorian-era tilt-top trestle table is a premier example of the 19th-century Chinoiserie revival, capturing the European fascination with Eastern aesthetics. The serpentine-edged top serves as a canvas for an elaborate hand-painted scene featuring exotic long-tailed pheasants amidst a lush arrangement of roses and botanical sprigs. The piece is finished in a classic ebonized "japanned" style, with the floral motifs extending down the turned pedestal and onto the elegant cabriole tripod legs. Its mechanical "snap-top" hinge, original to the form, allows the table to transition from a functional tea surface to a decorative fireside screen. Condition is fair; the painted surfaces exhibit significant age-related crazing and scattered pigment loss. Most notably, the tripod base shows

**2392a Round Oak Table**

Classic round oak table with round column base and 4 feet. Older refinish. No leaves included. Missing 1 caster. Measures 44" diameter x 29 1/2" tall

Note: Pickup/ Transport required. Contacts available post auction. 50.00 - 1,000.00

**2395 Mirrored Etager**

Mahogany etagere which has been refinished features 5 tiers of staggered shelves with fine spindles and filigree. One small piece of filigree is missing from the left side of the center shelf (see pics). Has 3 beveled mirrors in VG condition.

64" tall, 41.5" wide, 12.5" deep

Note: Pickup/ Transport required. Contacts available post auction. 400.00 - 4,000.00



NEW - Ghosted Goods Auction 6/11/2026

LOT #

2397 Late 19th C. Aesthetic Walnut Secretary Desk

This is a quintessential example of American furniture manufacturing from the late 19th century, showcasing the distinctive asymmetry and stylized ornamentation of the Aesthetic Movement with Eastlake influences. Constructed likely of walnut or stained hardwood, the desk features a fascinating hallmark of the era: the Knapp joint (also known as the pin-and-scallop) visible on the drawer sides, a machine-made joinery used almost exclusively between 1870 and 1900. The design includes a "step-down" gallery top with a paneled cabinet on the left and open, spindle-supported shelves with mirrors on the right. The slant-front desk opens to reveal a fitted interior with cubbies and drawers, resting above a lower cabinet base with incised geometric carving. A vintage handwritten list of names was found inside and is included. Condition is fair to good antique with significant structural repairs required. The most notable issue is the right front foot, which has broken off at the base; the detached block and caster are included with the lot for repair. Additionally, the wooden support for the upper right gallery shelf is fractured and separated, compromising the stability of that shelf. The decorative metal escutcheon for the drop-front is currently detached but present. The green felt writing surface is heavily worn and stained. General surface wear, scratches, and age-related fading are present throughout the finish. One key is included. H 70", W 32", D 18"



Note: Pickup/Transport required. Contacts available post auction. 400.00 - 4,000.00

2398 American Oak S-Roll Top Desk

This early 20th-century American oak roll-top desk features a classic "S-curve" tambour roll that retracts to reveal a fitted interior with pigeonholes, drawers, and document slots. The desk stands on twin pedestals, each containing a bank of four graduated drawers with carved wooden pulls, flanking a central knee-hole with a single wide drawer. The sides and back are finished with recessed panels. A decorative metal escutcheon is mounted on the roll. Condition notes include significant surface wear, scratches, and finish loss to the



LOT #

writing surface and pull-out writing slides. There is visible wear to the finish on the tambour slats and pedestal edges. Est. 50" H x 60" W x 34" D. Note: Pickup/Transport required. Contacts available post auction. 400.00 - 4,000.00

2400 Large Antique Mirrored Mahogany Armoire

Large Antique Mirrored Mahogany Armoire, Louis XVI-style wardrobe with intricate carved pilasters on either side and prominent molded cornice at the top, two storage drawers at bottom, two full-length doors with mirrored panels, brass bail handles, brass door plates and knobs with embossed details, designed as a functional storage piece for clothing or linens, often referred to as "knockdown" because it can be disassembled for easier transport, one trim piece needs to be reattached, good condition, see photos.



90" x 66" x 23"

Note: Pickup/Transport required. Contacts available post auction. 1,000.00 - 10,000.00

2401a Antique Oak Hanging Shaving Mirror Rack

This charming Victorian-style wall-mounted shaving station is crafted from solid oak, featuring a classic pediment with incised decorative carvings and turned finials that speak to late 19th-century craftsmanship. The piece includes a central mirror, a lower shelf with a notched "comb" or tool gallery, and a sturdy towel bar at the base, likely originating from a domestic American workshop. Condition is fair to good for its age; as noted, the mirror glass appears to be a modern replacement secured with duct tape and cardboard on the reverse, and there are visible screw reinforcements to the frame, though the wood remains structurally sound with a warm patina and wear commensurate with historical use. H 18", W 17.5", D 5". Please see photos for condition.



60.00 - 1,000.00

NEW - Ghosted Goods Auction 6/11/2026

LOT #

2402 French Provincial Style Console Table

This elegant French Provincial style console table features a striking serpentine front and classic cabriole legs adorned with detailed acanthus leaf carvings and a central fleur-de-lis motif on the apron. The walnut surface showcases a beautiful book-matched grain pattern accented by delicate perimeter inlay and a molded edge. A true marvel of mid-century engineering, it features a sophisticated accordion-style wooden expansion mechanism where the tracks slide open fairly freely, allowing it to extend significantly for dining. While the additional expansion leaves are not present, the table remains a versatile piece of furniture with a flip-top design that doubles its depth. The piece exhibits an honest patina of age, with visible nicks, heavy scratches to the top surface, and minor finish wear on the carved knees, though it remains structurally sound with no visible manufacturer's marks. When completely compacted, the table stands 29 inches off the floor and is 20.75" deep. The top surface is 8 inches wide before being fully unfolded to a length of approximately 41.5 inches without leaves; the accordion mechanism allows for a total potential length of approximately 82 inches, see photos.

29" x 38" x 20.75"

Note: Pickup/ Transport required. Contacts available post auction. 200.00 - 2,000.00

**2404 Victorian Walnut Dresser & Mirror**

Classic Victorian era walnut dresser and mirror that can also be used as a buffet. Base has 2 doors and 2 drawers with brass and ebony teardrop pulls. Base has applied carvings with burl insets and a pink and white marble top. Large walnut over mantle mirror sits on top of the marble with applied carvings, burl insets, and 4 small shelves. Great arched pediment top. Replaced mirror. Base measures 49" x 35" x 21 1/2" Top measures 48" x 61 1/2" x 10". No shipping on this item. Customer pickup or 3rd party transporter only. 500.00 - 10,000.00



LOT #

2404a Civil War Era Bow Front Dresser & Mirror

Made of solid wood, possibly ash. Original finish dresser has 3 drawers with carved casing, original glass and brass pulls, all drawers have locks but no key. Dresser has machine carved corners and is on block feet. Top of dresser has a routed edge bow front piece of white marble with a little gray mottle. Tall mirror sits on top of marble and has a lot of carving with large pediment, beveled mirror, and 2 lamp shelves. In overall VG condition.

Note: Pickup/ Transport required. Contacts available post auction. 500.00 - 1,000.00

**2405 Victorian Vanity Dresser & Mirror**

High Victorian walnut dresser with burl front drawers and brass & ebony tear drop pulls. Some pulls missing parts. All drawers have locks but no keys. Right side of dresser has a loose that will need repair. Top is a 3 piece dark pink marble with blood red veining in good condition and having a lowered center vanity section. Tall mirror is heavily carved with burl accents and 2 lamp shelves. Original glass mirror has some silver loss. Base measures 51.5" wide, 20.5" deep, 34.5 tall"

Mirror top measures 63.5" tall, 48" wide, 7" deep

Note: Pickup/ Transport required. Contacts available post auction. 500.00 - 1,000.00

**2406 Tall 7-Drawers Upright Dresser/Chest of Drawers**

This tall chest of drawers features design elements consistent with Continental European furniture, likely originating from France or Italy during the mid-to-late 19th century. The piece is a strong example of the Louis Philippe style or a related neoclassical revival, which prioritized clean lines, rounded corners, and functional elegance. The primary wood appears to be Walnut or a high-quality fruitwood (such as Cherry or Pear). The warm, honey-toned patina and fine grain visible on the side panels and drawer fronts are characteristic of European hardwoods from this period. The "semainier" (seven-drawer) style or tall-boy configuration is a classic European form. It features rounded front corners and a simple, molded cornice at the top, which are hallmarks of the Louis Philippe



NEW - Ghosted Goods Auction 6/11/2026

LOT #

aesthetic. There are seven drawers with recessed panels and are fitted with decorative turned wooden pulls. These pulls, combined with the locks on each drawer, suggest a piece designed for both security and refined domestic use. All locks are present but the provided key only works on the top drawer. The drawers are shallow, only 5" deep.

This piece likely represents a high-quality European import or a well-crafted American revival piece. In overall good to VG condition. The top has an old crack that has been repaired.

59" tall, 45" wide, 21" deep

Note: Pickup/ Transport required. Contacts available post auction. 500.00 - 5,000.00

2407 Oval Cocktail Table

Oval wood top with oval glass inset, shelf below, on legs. In good condition.

Measures 48" x 32" x 19"

Note: Pickup/ Transport required. Contacts available post auction. 50.00 - 1,000.00

**2408a Victorian Marble Top Parlor Table**

This is a handsome example of late 19th-century American craftsmanship, featuring a robust Eastlake influence with its characteristic incised carvings and turned spindles. The piece is crowned with a substantial, highly figured rouge marble top—a classic hallmark of the Victorian parlor. The base is constructed from solid walnut with fine burl veneers adorning the apron, accented by decorative drop finials at the corners. Overall, the piece presents well with an aged patina; however, there is one decorative fretwork element from the lower stretcher that has separated into two pieces and requires re-attachment. Minor surface abrasions and typical age-related wear to the wood finish are present, though the marble remains structurally sound with no apparent cracks. H 31", W 30.25", D 21.25". Please see photos for condition.

Note: Pickup/Transport required. Contacts available post auction.

500.00 - 10,000.00

**LOT #****2409 Vintage Lakeside Cedar Chest**

Vintage Lakeside Cedar Chest, beautiful example of an early to mid-20th-century cedar chest, often used as a hope chest, constructed from aromatic red cedar, visible on the interior and the underside of the lid, while the exterior has a warm, applied finish accentuating the natural knot patterns of the wood, stands on four simple, slightly carved feet and features a molded trim around the top and functional wooden handles on the sides, a brass-colored plaque on the inside of the lid identifies the manufacturer as Lakeside Craft Shops, Sheboygan, Wis., which manufactured cedar chests and other furniture, suggesting a likely production date from the 1920s through the 1940s, interior also has a metal mechanism near the top, possibly part of a locking feature or lid support, overall condition shows significant age-appropriate surface wear, including numerous scratches, scuffs, and some white marks/residue on the top surface, suggesting it was used as a table at some point. The structure appears sound, interior cedar is clean and intact.

21" x 48" x 21"

NOTE: Pickup/transport required. Contacts available post auction. 100.00 - 1,000.00

**2410a Pair of Mismatched Decorative Candlesticks**

Pair of Mismatched Candlesticks, Italian baroque alter candle holder, ornate knobbed baluster stem, cast brass with an aged finish, originally designed as religious decor, spelter construction and a column candlestick holder with antique bronze finish, fluted column shaft and ornate capital, made from chalkware, no cracks or breaks, has some wax residue, good condition, see photos.

23" and 17" tall 100.00 - 1,000.00

**2411 Antique G&G Teplitz Austria Porcelain Pitcher**

Antique G&G Teplitz Austria Porcelain Pitcher, features a ruffled, scalloped rim, an ornate handle, hand-painted floral motif, gold gilding on a "blush ivory" background, small chip in top rim, minor chips around edge of base, see photos. Nice Art Nouveau piece.-

14 1/2" tall 100.00 - 1,000.00



NEW - Ghosted Goods Auction 6/11/2026

LOT #

2412 Royal Dux Majolica Art Nouveau Figural Vase

Royal Dux Majolica Art Nouveau Figural Vase, features a sculpted maiden reclining against a shell-shaped form, marine theme with fish and sea flora, crafted from porcelain bisque, characterized by a matte, unglazed finish, intricately detailed, some chips and breaks to the end of the flowers, missing her thumb, see photos.

13" x 7" 500.00 - 5,000.00

**2413 Royal Dux Art Nouveau Figural Centerpiece Bowl**

Royal Dux Art Nouveau Figural Centerpiece Bowl, features young nude women clinging to a shell-like, splayed leaf form, produced during the late 19th and early 20th centuries, unglazed porcelain, a couple fingers are broken off and one foot is missing, see photos.

12" x 10" 500.00 - 5,000.00

**2415c Asian-Style Vases**

Lot of 2: Asian cloisonne style vases. First is Japanese Imperial style, three footed. It measures 4 1/4" x in height and 4" in diameter. Includes a stand. Second piece is a Chinese work measuring approximately 6" in height x 4 1/2" in diameter. Both are unmarked. The Japanese piece has some slight casting residue on the feet, otherwise they appear to be in good condition. 200.00 - 300.00

**2434 (2) Female Art Nouveau Bronze Busts**

(2) Female Bronze Busts, "Rose de Noel", Art Nouveau bronze bust featuring female figure with styled hair adorned with flowers, shows some wear and paint loss on her shoulders, also includes a figure named "Eglantine, metal with bronze finish, mounted on a marble base, young woman with a downcast gaze, styled hair and gown often adorned with floral accents, good condition, nice mantel displays, see photos. 22" x 12 1/2" (34lbs) and 11" x 7" 200.00 - 2,000.00



LOT #

2469 19th C. Italian School Painting

A nineteenth-century Italian School oil painting on canvas, likely a copy of an older work. The verso is indistinctly written, possibly with "Capoletti," a title, and the date 1893. The painting has four small tear restorations with inpainting: one approximately 1.5" at the bottom center near the frame's edge, one in the upper right center, and two other small restorations. The surface is quite dark, has substantial cracking, and needs a cleaning. The frame has losses to the gesso and decoration around the entire perimeter and appears to have been repainted. The painting measures approximately 41.5"H x 33"W, and with the frame, the dimensions are 51.75"H x 41.25"W. 400.00 - 4,000.00

**2478 Antique Oil Painting on Metal Panel**

Unknown artist. Subject matter is the end of Noah's Arcs journey. Does not bear an apparent artist signature or location. A few small paint chips in the face of Noah's wife in the center. Some darkening and requires a cleaning. There is very faint crackle to the paint throughout. Will require conservation. There are also a few small, tiny chips exposing the under layman or gesso. Painting: 6 3/8" x 9 1/8" 1,000.00 - 1,500.00

**2500 (5) Street Light Glass Globes and Tops**

(5) Street Light Glass Globes and Tops, three different style globes, textured glass, acorn shaped, one has a crack in side, four globe tops, two missing finials, see photos. Globes are 18", tops are 10"

Note: Pick Up or 3rd Party Transport Only
500.00 - 5,000.00

**2501 Street Lamp On Pole**

Classic look contemporary made cast aluminum street light. Hex shaped light head with plastic insert lens. Wired for standard base Edison bulb. 4 bolt base. Needs repaint. 114" tall, 10" X 10" base. Note: Pickup/Transport required. Contacts available post auction. 200.00 - 1,000.00



NEW - Ghosted Goods Auction 6/11/2026

LOT #**2508a Vintage Chandelier Cages/Parts**

Chandelier Frames/Parts, 7 pieces, structural cages with decorative elements, a large metal dome with an intricate, scale-like pattern functions as a center bowl or reverse dish, designed to hold glass panels, see photos. 100.00 - 1,000.00

**2511 Glazed Plaster Female Face Corbel/Bracket**

Glazed Plaster Corbel Female Face, nice, old architectural piece designed to serve as a support or bracket, shows signs of wear, visible chips, paint loss in antique finish, see photos.

13 1/2' x 8 1/2" 200.00 - 2,000.00

**2512 Pair of Rococo Cast Étagères Assembly**

This remarkable 38-piece (includes fragments) assembly represents a rare opportunity to construct a matching pair of four-tiered corner étagères, resplendent with the romantic flair of the Rococo Revival era. The set is anchored by twelve magnificent S-scroll brackets adorned with lush, deep-relief floral blooms and acanthus leaves, one of which bears the professional foundry casting mark "5267." These are complemented by a graduated series of eight triangular shelves—ranging from a substantial 15.75" base to a delicate 9" top—featuring whimsical high-relief scenes of winged cherubs and noble heraldic lions nestled within intricate lattice-work and scrolling vines. To complete the structural symphony, the collection includes four ornate floral filigree accents and a series of classic turned spindles that serve as elegant vertical dividers. Most of the cast iron remains in solid architectural condition with some breaks (all pieces are accounted for), displaying a storied, authentic patina with honest surface oxidation and minor pitting that speaks to its 19th-century origins. H 15.75", W 15.75", D 0.75" Please see photos for condition. Note: Pickup/Transport required. Contacts available post auction.

1,500.00 - 10,000.00

**LOT #****2514 Jeweler's Work Bench**

Classic tall jeweler's work bench in well used condition. Multi drawers for storage with iron pulls. Has the seldom seen pull out canvas filing catch for gold and silver. Currently has added glass top. Measures 40" wide, 38.5" tall, 20" deep.

Note: Pickup/ Transport required. Contacts available post auction. 200.00 - 1,000.00

**2518 Copper Flying Crane Garden Weathervane**

A garden weather vane featuring a copper sculpture of a flying crane or heron with extended wings. The figure is crafted from hollow copper with repoussé relief feather detailing and soldered seams. It is mounted on a directional arrow and includes a separate heavy metal directional cross featuring ornate scrollwork and cardinal points (N, S, E, W). Condition is weathered; the surface exhibits a mixed dark brown and verdigris patina, with visible bending to the arrow fletching and general wear from outdoor use. Est. 18 x 39 x 35 top, 25 x 30 x 29.

Note: Pickup/Transport required. Contacts available post auction. 100.00 - 1,000.00

**2522 2 Fortune Magazines February 1942 and May 1945**

Vintage Fortune Magazines issues February 1942 and May 1945, a lavishly illustrated magazine famously launched during the Great Depression, typically large-format 11" x 14" and printed via high-quality lithography, good condition, see photos. 100.00 - 1,000.00

**2523 3 Fortune Magazines May 1937 + Apr & Dec 1938**

Vintage Fortune Magazines from May 1937, April 1938 and December 1938, a lavishly illustrated magazine famously launched during the Great Depression, typically large-format 11" x 14" and printed via high-quality lithography, good condition, see photos. 100.00 - 1,000.00



NEW - Ghosted Goods Auction 6/11/2026

LOT #

2526 Vintage 1930 Fortune Magazine

Vintage Fortune Magazine from May 1930, a lavishly illustrated magazine famously launched during the Great Depression, typically large-format 11" x 14" and printed via high-quality lithography, good condition, see photos. 100.00 - 1,000.00

**2527 Vintage 1930 Fortune Magazine Volume 1 No.3**

Vintage Fortune Magazine from April 1930, a lavishly illustrated magazine famously launched during the Great Depression, typically large-format 11" x 14" and printed via high-quality lithography, good condition, see photos. 100.00 - 1,000.00

**2530 Vintage 1930 Fortune Magazine Volume 1 No.1**

Vintage Fortune Magazines from February 1930, "Wheel of Fortune", a lavishly illustrated magazine famously launched during the Great Depression, typically large-format 11" x 14" and printed via high-quality lithography, good condition, see photos. 100.00 - 1,000.00

**2531 2 Fortune Magazines January/October 1935**

Vintage Fortune Magazines from January 1935 and October 1935, a lavishly illustrated magazine famously launched during the Great Depression, typically large-format 11" x 14" and printed via high-quality lithography, good condition, see photos. 100.00 - 1,000.00

**2533 2 Pictorial Review Magazines**

3 vintage Pictorial Review magazines. November 1924, December 1924 and February 1925. 100.00 - 1,000.00



LOT #

2534 6-Pictorial Review Magazines

Vintage Pictorial Review February 1924, April 1924, May 1924, July 1924, September 1924, October 1924 100.00 - 1,000.00

**3000 Daniel Monfort "War Chief" Sculpture**

Daniel Monfort "War Chief" Sculpture depicting a Native American Indian Chief on horseback, made of cold-cast resin, signed, 15" x 16", good condition, see photos.



Own a piece of history from the Donley's Wild West Town Gift Shop! 100.00 - 10,000.00

3001 Daniel Monfort Native American Indian Sculpture

Daniel Monfort Native American Indian Sculpture, hydrostone or similar, 1990s, depicting a Medicine Man or Chief with intricate details, buffalo fur headdress, spear, signed, 13" tall, good condition, see photos.



Own a piece of history from the Donl 100.00 - 10,000.00

3003 Collectible 1975 Fred Curtis Western Cowboy Statue

Collectible 1975 Fred Curtis Western Cowboy Statue, hand painted, signed, 14" tall, good condition, see photos.



Own a piece of history from the Donley's Wild West Town Gift Shop! 100.00 - 10,000.00

3004 Collectible Austin Products Bronze Cowboy Statue

Collectible Austin Products Bronze Cowboy Statue featuring a cowboy resting next to his saddled horse, bronze or bronze-plated, 12" x 10", see photos. Very nice western art decor!



Own a piece of history from the Donley's Wild West Town Gift Shop! 100.00 - 10,000.00

LOT #**3005 Collectible Clint Eastwood Josey Wales Statue**

Collectible Clint Eastwood Josey Wales Statue, high-quality resin, depicting character Josey Wales from the film, designed by Peter Mook, a detailed, seated figure of Eastwood in western attire holding a revolver with an American flag behind him, 12" 100.00 - 10,000.00

**3006 (3) Michael Garman John Wayne & Cowboy Sculptures**

(3) Michael Garman John Wayne & Cowboy Sculptures, two John Wayne as US Cavalry Sergeant bronzetone statues, metal resin, approx 12" tall, a 1982 Garman cowboy or gunslinger, 10.5" tall, minor chips to all three, see photos. Own a piece of history f 100.00 - 10,000.00

**3008 (4) Decorative Farmhouse Decorations**

(4) Decorative Farmhouse Decorations includes a Taylor Fladgate crate, a small, rustic storage crate, a firkin-style bucket and a decorative window frame mirror with a crack in one of the panes, see photos. Own a piece of history from the Donley's W 100.00 - 10,000.00

**3009 (3) Decorative Western-Style Mirrors**

(3) Decorative Western-Style Mirrors, two resin frames with the look of thick, twisted jute or rope, felt backing, 11.5" x 9.5", good condition, and an older rectangular mirror with a gilded wood frame, glass has spotting and pitting due to age, wire 100.00 - 10,000.00

**3020 Native American Kachina Dolls, Misc**

Native American Kachina Dolls, Misc includes three Kachina dolls, representation of spiritual beings in Hopi and Navajo cultures, approx 11" tall, a Mudhead Kachina doll, hard-carved from cottonwood root, 8.5" tall, a hand-crafted Navajo prayer rattl 100.00 - 10,000.00

**LOT #****3021 Native American Kachina Dolls, Misc**

Native American Kachina Dolls, Misc includes three Kachina dolls, 12" tall, a smaller Kachina doll 7" tall and a Navajo rawhide beaded rattle, 19" long, good condition, see photos. Own a piece of history from the Donley's Wild West Town Gift Shop! 100.00 - 10,000.00

**3023 Native American Shirley Davis Doll**

Native American Vinyl Doll features face paint, a fur headdress, suede clothing with beaded details, display pieces rather than toys, 14" tall, signed Shirley Davis, 5/98 SLD on back, good condition, see photos. Own a piece of history from the Donle 100.00 - 10,000.00

**3024 Inuit Eskimo Shirley Davis Baby Doll**

Inuit Eskimo Shirley Davis Baby Doll features a rabbit fur costume, painted face and chest, used for display not as a toy, marked Shirley Davis 5/98 SLD on back, 13" tall good condition, see photos. 100.00 - 10,000.00

**3025 Native American Shirley Davis 1998 Doll**

Native American Vinyl Doll features face paint, a fur headdress, suede clothing with beaded details, display pieces rather than toys, 14" tall, signed Shirley Davis, 5/98 SLD on back, good condition, see photos. Own a piece of history from the Donle 100.00 - 10,000.00

**3026 Native American Chief Collectible Doll**

Native American Chief Collectible Doll featuring intricate hand-painted facial details, a traditional beaded breastplate and a large feather headdress, Traditions Limited Edition #403, Chief War Cloud, Oglala Sioux, 16" tall, good condition, also inc 100.00 - 10,000.00



NEW - Ghosted Goods Auction 6/11/2026

LOT #

3028 Native American Gourd Rattles, Plaques, Misc

Native American Music Rattles, Plaques, Misc includes Bulldog figurine dressed as a Native American Chief "Chief Sitting Bulldog", 6.5" tall, five gourd rattles, ranges in sizes from 12" to 19", six natural wood slice hanging wall plaques/decor with 100.00 - 10,000.00



LOT #

3033 Native American Spirit Mask Wall Sculpture

Native American Spirit Mask Wall Sculpture decorative wall art constructed from resin to create a 3D effect, faux fur and leather for headdress base and trip, depicts a Sioux or general Plains Indian Chief, approx 20" long, wire hanger on back, good 100.00 - 10,000.00

**3029 Native American Spirit Mask Wall Sculpture**

Native American Spirit Mask Wall Sculpture decorative wall art constructed from resin to create a 3D effect, faux fur and leather for headdress base and trip, depicts a Sioux or general Plains Indian Chief, approx 20" long, missing wire hanger on bac 100.00 - 10,000.00

**3034 Native American Large-Scale Souvenir Doll & Bows**

Native American Large-Scale Souvenir Doll features feather headdress, fringed clothing and beaded details, used for display purposes, Indian Chief, 58" tall, head needs to be re-attached, a little tattered, overall good condition, also includes two d 100.00 - 10,000.00

**3030 Native American Spirit Mask Wall Sculpture**

Native American Spirit Mask Wall Sculpture decorative wall art constructed from resin to create a 3D effect, faux fur and leather for headdress base and trip, depicts a Sioux or general Plains Indian Chief, approx 20" long, wire hanger on back, good 100.00 - 10,000.00

**3035 Rustic Metal Howling Wolf Yard Decor**

Rustic Metal Howling Wolf Yard Decor, made from durable steel, rust patina, has flat brackets at bottom to secure to the ground, was outside at Wild West Town for many years, good condition, see photos! Own a piece of history from the Donley's Wild West Town General Store! 100.00 - 10,000.00

**3031 Native American Spirit Mask Wall Sculpture**

Native American Spirit Mask Wall Sculpture decorative wall art constructed from resin to create a 3D effect, faux fur and leather for headdress base and trip, depicts a Sioux or general Plains Indian Chief, approx 20" long, wire hanger on back, good 100.00 - 10,000.00

**3036 Decorative Welcome Signs & Gift Boxes**

Decorative Welcome Signs & Gift Boxes, new old stock, includes two farmhouse wood "Welcome" signs, 16", one "Home Sweet Home on the Range" wood sign, 12", one "Welcome to the Cabin" wood and metal sign 15.5" and two schoolhouse gift boxes or keepsake containers, 6.5" x 5.5", good condition, see photos. Own a piece of history from the Donley's Wild West Town Gift Shop! 50.00 - 1,000.00

**3032 Native American Spirit Mask Wall Sculpture**

Native American Spirit Mask Wall Sculpture decorative wall art constructed from resin to create a 3D effect, faux fur and leather for headdress base and trip, depicts a Sioux or general Plains Indian Chief, approx 20" long, wire hanger on back, good 100.00 - 10,000.00



NEW - Ghosted Goods Auction 6/11/2026

LOT #**3037 Repro Advertising Signs, Bookends**

Repro Advertising Signs, Bookends includes a Buster Brown Hosiery sign 6.5" x 4.25", a cardboard Village Blacksmith Knife ad, 14" x 9", a porcelain Motor Fuel sign 7" x 6" and two metal Buck Deer bookends, see photos.

Own a piece of history from the Donley's Wild West Town General Store! 100.00 - 10,000.00

**3038 Southwestern-Style Metal Decor Kokopelli & Bird**

Southwestern-style Metal Decor Kokopelli Figure and Bird, metal decorative item with base, 19.25" x 17.25", good condition, metal sculpture of a roadrunner with a textured finish, see photos.

Own a piece of history from the Donley's Wild West Town General Store! 100.00 - 10,000.00

**3039 Decorative Metal Cowboy Boot and Hat**

Decorative Metal Cowboy Boot and Hat, metal cowboy boot use for home or garden decoration, 11" x 15.5", good condition, metal cowboy hat is flat with wire star and leather hanger, 22" x 11.25", good condition, see photos.

Own a piece of history from the Donley's Wild West Town Gift Shop! 100.00 - 10,000.00

**3040 Decorative Metal Wall Hanging, Horse Key/Hat Rack**

Decorative Metal Wall Hanging, Coat Rack includes a round metal "Lone Star" metal wall hanging, 15" diameter, a pair of black metal howling coyote and cactus candle holders, 8.25" x 10.5", and a cast iron triple horse head and horseshoe wall-mounted hook rack for hats or keys, 8.5" x 5.5", see photos.

Own a piece of history from the Donley's Wild West Town Gift Shop! 100.00 - 10,000.00

**LOT #****3041 Large Decorative Hand-Forged Cowboy Spur, Misc**

Large Decorative Hand-Forged Cowboy Spur, dark, rustic finish, heavy-duty construction, 17" x 7.5", also includes a cast iron moose folk-art piece, 9" x 8" and a metal bird wall sculpture or garden art, 12" x 19", see photos.

Own a piece of history from the Donley's Wild West Town Gift Shop! 100.00 - 10,000.00

**3042 Decorative Wall Hanging, Frames, Wind Chime**

Decorative Wall Hanging, Frames, Wind Chimes includes a thick wood spur and horseshoe coat/hat rack, 15" x 11", two 5" x 7" picture frames and a western-themed ceramic wind chime, good condition, see photos.

Own a piece of history from the Donley's Wild West Town Gift Shop! 100.00 - 10,000.00

**3043 Pair of Metal Western-Theme Wall Decor**

Pair of Metal Western-Theme Wall Decor, new old stock, features a cowboy riding a bucking bronco in a desert landscape, has a metallic look, 24" x 24", good condition, see photos.

Own a piece of history from the Donley's Wild West Town Gift Shop! 100.00 - 10,000.00

**3044 (3) Decorative Metal/Wrought Iron Plant Holders**

(3) Decorative Metal Plant Holders includes a stand used to hang a potted plant, a basket tree and a twisted wire plant stand to hang plants at different levels, has seven hooks, can also be used to display coffee mugs, 24" x 14", see photos.

Own a piece of history from the Donley's Wild West Town General Store! 100.00 - 10,000.00



NEW - Ghosted Goods Auction 6/11/2026

LOT #

3045 (3) Folk Art, Wooden Figurine, Easel

(3) Folk Art, Wooden Figurine, Easel includes a rustic, handmade wooden rocking horse, made of wood, branches and twigs with a twine mane, one of the wood foot rests is broken, 15" x 16", a "Texas Cowboy Santa", hard-carved sculpture, his right hand has been repaired, 16", and a hand-carved wooden tiger designed as a jewelry display easel to showcase necklaces and pendants, 15", see photos.

Own a piece of history from the Donley's Wild West Town Gift Shop! 100.00 - 10,000.00

**3046 (4) Misc Animal Figurines**

(4) Misc Animal Figurines includes a cast iron Springer Spaniel doorstop, 7", a rustic, resin rabbit, 5", a vintage 1974 cast metal coin bank teddy bear, 5", and a resin, bronze-finish, wolf bust, 7.5", good condition, see photos.

Own a piece of history from the Donley's Wild West Town Gift Shop! 100.00 - 10,000.00

**3059 Silver Plate and Copper Chafing Set with Serveware**

This lot includes a variety of silver-plated and copper table articles including a Manning, Bowman & Co. copper chafing dish on a stand with a matching burner and mug, a silver-plated tilting teapot on a stand with an integrated burner, a Derby Silver Co. quadruple plate openwork basket, a floral etched creamer and open sugar set, a folding stand, a Victorian-style footed spooner with engraved aesthetic motifs, a pierced tomato server, and a cold meat fork.

The copper pieces exhibit heavy surface oxidation and patina consistent with age. The silver-plated items show varying degrees of tarnish and some plate loss, particularly on the interior of the teapot and the serveware. The Sugar and Creamer show minor dents on the base consistent with age and normal use. The tea set and spooner show minor surface scuffing and small indentations. Chafing dish measures approximately H 9.5" x W 9" x D 9", copper mug H 3.75", W 4.75" tilting teapot on stand H 9" W 9" D 9", spooner H 6.75" W 8" D 8", and servers range from Tomato L 8.5", Fork L 8.75" folding H 2.25 L 6.25.



LOT #

Pierced basket H 4.25, W 4.25; Sugar H 3.75, W 6.25"; Creamer H 3.75, W 5.25". 15 overall pieces when taken apart. Own a piece of history from The Donley's Wild West Town Museum! 100.00 - 10,000.00

3060 Antique Silver-Toned Floral Cake Stand

This elegant Victorian-style mirror plateau or cake stand features a circular beveled glass top set within a highly ornate, cast metal frame. The frame is decorated with a continuous band of scrolling acanthus leaves and prominent blooming floral motifs that serve as the feet, elevating the piece with a classic, romantic aesthetic. The metal appears to be a silver-plated base metal, showing a wonderful aged patina that collectors often look for in tabletop service pieces. The underside shows a rustic, oxidized metal backing consistent with late 19th to early 20th-century construction. The condition is fair to good; the glass surface shows significant scratching and scuffing from years of use, and there is some visible wear to the silver plating on the high points of the floral casting and edges. H 1.5", W 15", D 15". Own a piece of history from The Donley's Wild West Town Museum! 100.00 - 10,000.00

**3061 Decorative Ceramic Sombrero Chips & Dip Bowl**

Decorative Ceramic Sombrero Chips & Dip Bowl, new old stock, shaped like a sombrero hat used for serving snacks like chips and salsa, 12" round, good condition, see photos.

Own a piece of history from the Donley's Wild West Town Gift Shop! 100.00 - 10,000.00

**3062 Decorative Ceramic Sombrero Chips & Dip Bowl**

Decorative Ceramic Sombrero Chips & Dip Bowl, new old stock, shaped like a sombrero hat used for serving snacks like chips and salsa, 12" round, good condition, see photos.

Own a piece of history from the Donley's Wild West Town Gift Shop! 100.00 - 10,000.00



NEW - Ghosted Goods Auction 6/11/2026

LOT #

3063 Vintage Wesley Amick Framed Western Print

Vintage Wesley Amick Framed Print, reproduction titled "The Emigrants" or "The Pioneers", classic American Western scene of covered wagon being pulled by oxen across a desert landscape, not an original oil painting, frame and print are dusty, some minor scratches, 46.5" x 35", see photos.



Own a piece of history from the Donley's Wild West Town General Store!

Note: shipping artwork may result in excessive shipping costs. 100.00 - 10,000.00

3064 Traditional Wood Library or Writing Desk

Traditional Wood Library or Writing Desk features a rectangular top with one drawer and curved, cabriole legs, versatile open design, top shows use with some scratches and a water stain that buckled the wood, needs a good refinishing, 29" x 40" x 26", see photos.



Own a piece of history from the Donley's Wild West Town General Store!

Note: Pickup/ Transport required. Contacts available post auction. 100.00 - 10,000.00

3065 Small Oak End Table

Oak wood in original finish with some light scuffs and scratches. Has egg and dart trim, carved spindle legs and a single lower shelf. Overall fair to good condition.

20" L X 20" W X 25" H

Own a piece of history from the Donley's Wild West Town General Store! 100.00 - 10,000.00

**3066 Toy Miner's White Helmet from Donley's WWT**

Toy Miner's Helmet - White, new old stock, from Donley's Wild Town's Rock Shop, features a built-in imitation light on the front, needs batteries, see photos.

Here is your chance to own a piece of history from one of McHenry County's beloved landmarks and family entertainment destination spots for over 45 years! 25.00 - 1,000.00



LOT #

3067 Toy Miner's Pink Helmet from Donley's WWT

Toy Miner's Helmet - Pink, new old stock, from Donley's Wild Town's Rock Shop, features a built-in imitation light on the front, needs batteries, see photos.

Here is your chance to own a piece of history from one of McHenry County's beloved landmarks and family entertainment destination spots for over 45 years! 25.00 - 1,000.00

**3068 Toy Miner's Pink Helmet from Donley's WWT**

Toy Miner's Helmet - Pink, new old stock, from Donley's Wild Town's Rock Shop, features a built-in imitation light on the front, needs batteries, see photos.

Here is your chance to own a piece of history from one of McHenry County's beloved landmarks and family entertainment destination spots for over 45 years! 25.00 - 1,000.00

**3070 Toy Miner's Green Helmet from Donley's WWT**

Toy Miner's Helmet - Green, new old stock, from Donley's Wild Town's Rock Shop, features a built-in imitation light on the front, needs batteries, see photos.

Here is your chance to own a piece of history from one of McHenry County's beloved landmarks and family entertainment destination spots for over 45 years! 25.00 - 1,000.00

**3071 Toy Miner's Green Helmet from Donley's WWT**

Toy Miner's Helmet - Green, new old stock, from Donley's Wild Town's Rock Shop, features a built-in imitation light on the front, needs batteries, see photos.

Here is your chance to own a piece of history from one of McHenry County's beloved landmarks and family entertainment destination spots for over 45 years! 25.00 - 1,000.00



NEW - Ghosted Goods Auction 6/11/2026

LOT #

3072 Toy Miner's Blue Helmet from Donley's WWT

Toy Miner's Helmet - Blue, new old stock, from Donley's Wild Town's Rock Shop, features a built-in imitation light on the front, needs batteries, see photos.

Here is your chance to own a piece of history from one of McHenry County's beloved landmarks and family entertainment destination spots for over 45 years! 25.00 - 1,000.00

**3073 Toy Miner's Blue Helmet from Donley's WWT**

Toy Miner's Helmet - Blue, new old stock, from Donley's Wild Town's Rock Shop, features a built-in imitation light on the front, needs batteries, see photos.

Here is your chance to own a piece of history from one of McHenry County's beloved landmarks and family entertainment destination spots for over 45 years! 25.00 - 1,000.00

**3074 Kids Black Felt Cowboy Hat from Donley's WWT**

Kids Black Felt Cowboy Hat from Donley's Wild West Town's Gift Shop, new old stock, features the phrase "Donley's Wild West" hand-embroidered across front of crown, star shaped sheriff's badge and chin strap, see photos.

Here is your chance to own a piece of history from one of McHenry County's beloved landmarks and family entertainment destination spots for over 45 years! 25.00 - 1,000.00

**3075 Kids Black Felt Cowboy Hat from Donley's WWT**

Kids Black Felt Cowboy Hat from Donley's Wild West Town's Gift Shop, new old stock, features the phrase "Donley's Wild West" hand-embroidered across front of crown, star shaped sheriff's badge and chin strap, see photos.

Here is your chance to own a piece of history from one of McHenry County's beloved landmarks and family entertainment destination spots for over 45 years! 25.00 - 1,000.00



LOT #

3076 Kids Pink Felt Cowboy Hat from Donley's WWT

Kids Pink Felt Cowboy Hat from Donley's Wild West Town's Gift Shop, new old stock, features the phrase "Donley's Wild West" hand-embroidered across front of crown, star shaped sheriff's badge and chin strap, see photos.

Here is your chance to own a piece of history from one of McHenry County's beloved landmarks and family entertainment destination spots for over 45 years! 25.00 - 1,000.00

**3077 Kids Red Felt Cowboy Hat from Donley's WWT**

Kids Red Felt Cowboy Hat from Donley's Wild West Town's Gift Shop, new old stock, features the phrase "Donley's Wild West" hand-embroidered across front of crown, star shaped sheriff's badge and chin strap, see photos.

Here is your chance to own a piece of history from one of McHenry County's beloved landmarks and family entertainment destination spots for over 45 years! 25.00 - 1,000.00

**3079 17-Piece Ruby Red Mid-Century Modern Glass/Barware**

17 Piece Ruby Red Mid-Century Modern Glass/Barware includes 8 Fostoria Argus ruby water goblets, 6.5" tall, good condition, Mid-Century Modern barware featuring a ruby red glass decanter 6.5" tall with matching flat-top stopper and six shot glasses, a vintage creamer and sugar bowl from the LE Smith Glass Co, "Moon and Stars" pattern in Amberina red to yellow gradient glass, good condition, see photos. 100.00 - 10,000.00

**3080 Etched Floral Crystal Stemware Collection**

This extensive, 33 piece collection of clear crystal stemware features delicate, all-over etched floral and scroll patterns throughout various vessel shapes. The lot comprises multiple sizes and styles, including tall trumpet flutes, wide-rimmed coupe/martini glasses with faceted stems, various wine and water goblets, and smaller cordial or aperitif glasses. Also included is a single frosted glass mug decorated with an etched stag motif. The glassware displays fine



NEW - Ghosted Goods Auction 6/11/2026

LOT #

craftsmanship with thin walls and detailed intaglio-style etching. In overall good condition, though several pieces exhibit visible clouding or "sick glass" - mineral deposits that may require professional cleaning. No significant chips or cracks are immediately visible. Dimensions range from approximately 3" H x 2" W for the smallest stems to 8" H x 3" W for the largest flutes. 100.00 - 10,000.00

3081 Czechoslovakian Porcelain Dinnerware Service

This extensive, 57 piece porcelain dinnerware set features a white background decorated with a cobalt blue band, gilded accents, and polychrome floral sprays including pink roses and yellow and blue blossoms. The set includes a lidded tureen, a gravy boat with an attached underplate, a lidded sugar bowl, a creamer, various serving platters and bowls, dinner plates, soup bowls, bread and butter plates, and several teacups with saucers. Each piece is marked on the underside with a circular green "MADE in CZECHOSLOVAKIA" stamp. The set appears to be in good overall condition with some visible wear to the gilded rims and handles, and minor surface scratches consistent with age and use. Tureen measures approximately 7" x 12" x 8"; dinner plates 10" diameter; teacups 2.5" x 4.5" x 3.75". 200.00 - 10,000.00

**3082 (8) Assorted Vintage Ceramic Mugs**

Collection includes (8) vintage assorted ceramic mugs, perfect addition for your cabinet or bar. Please use photos to judge condition and bid accordingly. 50.00 - 1,000.00

**3083 (3) Semi Precious Stone Demitasse Spoon Sets**

Collection of (3) complete boxed sets of demitasse spoon sets; each perfectly accented with semi precious stones. The smallest set stands 3.5", the middle set stands 4" and the tallest set stand 4.5" tall. Each set still showcased inside original boxes. Please see photos. 50.00 - 1,000.00



LOT #

3084 Assorted Wrist & Pocket Watch Collection

Collection features NIB Elgin Train inspired gold tone pocket watch w box, NIB "Statue of Hope" commemorative pocket watch, Fred Belay "Golf" themed pocket watch with box, Ladies Wittnauer two tone wrist watch new in original box; needs battery, Gruen 225-5150 gold nugget inspired finish; excellent like new condition needs battery; vintage Gruen Alarm gold tone watch 243-6L71 with case; works with some wear. Perfect additions to your collection, please use photos to judge condition and bid accordingly. 200.00 - 10,000.00

**3085 (2) Sappho Plaster Female Statues**

Lot of 2: First, a detailed plaster bust of a woman produced by Sappho designer in very good condition. 17" H X 9" W X 5" D. Second, a vintage outdoor clay-lime plaster statue of a woman dressed in a long robe and sandals carrying a goose and a basket. This item is highly detailed but shows some signs of wear. Paint chipping and light nicks and scuffs throughout. Please see photos. 32" H X 12" W X 9" D. 150.00 - 10,000.00

**3089 4 Collectible George Strait Concert Folding Chairs**

(4) Collectible George Strait Concert Folding Chairs from the "Strait to Vegas" shows at T-Mobile Arena and the Wrangler National Finals Rodeo events in Las Vegas, good condition, 37" x 18", see photos. Who doesn't love George Strait?! 100.00 - 1,000.00

**4000 Vintage Americana and Eclectic Wall Decor Lot (4)**

This is an appealing gathering of vintage Americana and decorative wall hangings. Leading the collection is a classic mid-century cast metal dual-flag "Pledge of Allegiance" wall plaque manufactured by Sexton (USA), finished in patriotic red, white, blue, and gold-painted tones. Accompanying it is an ornate, gold-toned metal eagle decorative shelf bracket, a carved dark wooden shield plaque featuring a central brass-toned circular insert depicting a horn player in relief, and a



NEW - Ghosted Goods Auction 6/11/2026

LOT #

small, beautifully detailed Greek Orthodox wooden icon of the Virgin Mary decorated with a shimmering gold foil overlay. Each piece shows an authentic vintage patina, minor paint loss, and surface wear consistent with age and display, but they remain intact and ready to mount. Sexton Flag Plaque: H 14.75", W 9", D 1"; Eagle Bracket: H 11", W 8.5", D 1"; Shield Plaque: H 11", W 8", D 2"; Mary Icon: H 4.75", W 4.75", D 0.5". Please see photos for condition.

50.00 - 1,000.00

4001 Vintage Chinese Cloisonne Vase & Dish

This grouping features a fine selection of 20th-century Chinese cloisonné, including a larger baluster-form vase with a carved wooden stand, a secondary ginbari-style vase with foil-backed enamel, and a small decorative dish. The primary vase showcases traditional wirework with floral motifs against a black ground, while the smaller vase exhibits striking "goldstone" or aventurine-flecked enamel featuring birds in flight. Both vases are stamped "CHINA" on their copper bases, typical of export wares from the Republic period to the mid-century. Overall, the pieces are in good vintage condition; the larger vase shows minor surface pitting consistent with age, while the smaller ginbari vase has a significant impact bruise and associated spider cracking to the enamel on one side. The small dish has minor edge wear to the brass rim. Larger Vase: H 9", W 4.5", D 4.5"; Smaller Vase: H 5", W 3", D 3"; Dish: H 0.5", W 3.5". See photos for condition.

100.00 - 1,000.00

**4002 Antique Cast Brass Satyr Oil Lamp & Candlestick**

This striking duo of Victorian-era lighting includes a Grand Tour style pocket oil lamp and a whimsical chamber candlestick. The cast brass pocket oil lamp features a classically inspired, highly detailed Satyr (or Grottesque) face on the rear, a hinged lid revealing its original rope wick, and a threaded, chained snuff cap at the spout. The companion chamber candlestick is designed with an ornate leaf-shaped base and a scrolling handle, featuring a central glass font sphere historically used to hold colored water or perfumed oils beneath the candle socket. Both pieces exhibit a beautiful, naturally aged patina with light surface wear, minor oxidation spots, and

**LOT #**

gentle rubbing to the gilded/silvered highlights, but they remain structurally sound and highly collectible. Oil Lamp: H 4.5", W 6", D 2.75"; Candlestick: H 7", W 4.5", D 6.75". Please see photos for condition.

100.00 - 1,000.00

4003 Nautical Decors & Scrimshaw-Style Jar

This charming collection of maritime and decorative curiosities features a prominent modern scrimshaw-style tobacco jar crafted from a polymer or resin material, decorated with intricate nautical harbor scenes and an eagle-crested lid. Accompanied by a finely carved wooden sailing vessel with cloth sails, a unique hand-carved mirror featuring a nautical motif on the reverse, and two crystalline castle figurines that add a touch of whimsy to the grouping. These pieces represent a mid-to-late 20th-century appreciation for traditional seafaring aesthetics and folk art traditions. The items appear in good overall condition; the jar shows minor surface scuffs and ink darkening consistent with age, the wooden ship displays slight fraying to the rigging, and the mirror and crystal pieces remain structurally sound with no visible chips. Mirror: H 6.25", W 5", D 2.5"; Scrimshaw Jar: H 3.25", W 2.5", D 2"; Wooden Ship: H 4.25", W 5", D 1.25"; Tall Castle: H 4.25", W 1", D 1"; Short Castle: H 2.5", W 1", D 1". Please see photos for details.

60.00 - 1,000.00

**4004 Antique Stereoviewers & Anatomy Card**

Two exceptional antique stereoscopic viewers highlight this collector's lot. The first is a hand-held Holmes-style stereoscope boasting an intricately engraved aluminum hood trimmed in soft velvet, a classic turned wooden handle, and a functional slide bar. The metal under-plate bears the crisp engraving for the "Edinburgh Stereoscopic Anatomy, Imperial Publishing Co., 27 East 22nd St., N.Y." indicating its historical alignment with the famous early-19th-century medical reference sets. Included with it is a vintage double-image stereoview card depicting "The Victorian Saloon, Royal Palace, Stockholm, Sweden." The second piece is a beautiful, Victorian-era folding tabletop stereo/monocular graphoscope viewer meticulously crafted from rich mahogany, complete with adjustable brass support



NEW - Ghosted Goods Auction 6/11/2026

LOT #

rods, twin viewing lenses, and a large circular reading glass. Both show wonderful late 19th to early 20th-century optical craftsmanship. Regarding condition: the hand-held viewer is in very good antique condition, showing only light surface wear and minor fraying on the velvet eye hood. The mahogany tabletop viewer remains functionally sound with clear, intact lenses, though it displays moderate dust, minor surface scratches, and its wooden base ladder (designed to prop the unit at an angle) is broken, requiring replacement or repair. Hand-held viewer: H 8", W 5.5", D 13". Tabletop viewer (folded): H 4", W 5.75", D 9.5". Please see photos for condition.

120.00 - 10,000.00

4005 (5) Vintage Hair Combs and Amethyst Glass Brooch

Decorative hair combs and a brooch, includes a celluloid three-prong design in a faux tortoiseshell or black finish, a Spanish-style hair comb in a butterscotch or amber-toned celluloid with blue rhinestone accents, a black "swirl" embellished with clear rhinestones, a faux tortoiseshell hair comb that looks broken, decorated with faceted rhinestones, and an Art Deco antique brooch, possibly created by Neiger Brothers, brass with intricate filigree work, faceted rectangular amethyst glass center stone surrounded by smaller purple glass stones, see photos. 50.00 - 500.00

**4006 19th C Gambler "Luminous Reader" Cheating Glasses**

This is an incredibly rare and fascinating pair of mid-to-late 19th-century "Luminous Reader" spectacles, historically used by saloon gamblers to cheat at poker. Featuring deep cobalt blue-tinted lenses and a delicate brass wire frame with a classic saddle bridge, these glasses allowed players to read otherwise invisible, phosphorescent-ink markings on the backs of marked cards. An iconic piece of Old West gambling history, these "cheaters" are in excellent vintage condition with no chips to either lens, though a thin, light scratch is visible on the right lens, and the wire hardware exhibits a natural, age-appropriate patina. H 1.38", W 5", D 4.5". Please see photos for condition. 400.00 - 10,000.00

**LOT #****4007 Whimsical Ceramic & Opalescent Glass Lot (4)**

This delightful 4-piece ensemble features a rare ceramic "Pig Monk" character pitcher, a glazed centerpiece with five expertly modeled frogs, a tri-footed bisque "Cracked Egg" vase with cherubs in relief, and a pink opalescent coin dot glass candle votive. The Pig Monk pitcher, likely of German or Continental origin from the early 20th century, captures the "character jug" style perfectly with its detailed keys and wooden spoon. The pink glass piece features the classic milky complexion found in Fenton or Northwood opalescent wares, while the bisque egg vase bears the marking "722" on the underside. All items are in excellent vintage condition with no visible cracks or chips, showing only minor surface wear consistent with age. H 5.25", W 5.25", D 5.25" Please see photos for condition.



100.00 - 1,000.00

4008 Pair of Chinese Mudman Style Figures on Bases

These charming glazed ceramic figures are classic examples of Chinese "Mudman" pottery, likely dating to the mid-20th century. The taller figure depicts a traveling immortal or sage carrying a large coin and a peach, symbolizing wealth and longevity, while the smaller seated figure portrays a contemplative elder with a traditional straw hat. Both pieces showcase the characteristic expressive faces and vibrant Sancai-style lead glazes in green, blue, and yellow. The figures are accompanied by carved wooden display bases, both bearing "Made in China" labels. The items are in good vintage condition with some minor glaze pops and shelf wear consistent with age; there is a small visible surface flake on the back of the taller figure's green robe. Larger figure: H 6", W 4.5", D 2". Smaller figure: H 3.75", W 2.5", D 2.5". Bases: H 1", Diameter 3.25". Please see photos for condition. 50.00 - 1,000.00



NEW - Ghosted Goods Auction 6/11/2026

LOT #

4009 Vintage Feuerhand Nr. 270 Lantern Lot

This is a fantastic, highly collectible assortment of vintage and antique lighting, featuring a rare, pre-WWII German-made Nier Feuerhand Nr. 270 hurricane lantern complete with its original wick assembly and a beautiful, deep ruby-red glass globe. Highly sought after by lantern enthusiasts, this particular model was produced primarily in the 1930s and features the classic hot-blast design. It is accompanied by a beautifully detailed, Victorian-style cast metal desk lamp base depicting a hand clutching a torch, a clear glass finger oil lamp with a spiral-ribbed body, a larger clear glass stand-alone oil lamp base, a charming rustic "forest scene" motion-style novelty cylinder light complete with its internal bulb assembly, and a vintage brass-finished wall-mounted sconce bracket. All items show an authentic, aged patina: the Feuerhand Nr. 270 lantern remains complete with its burner mechanism, wick, and wick raiser, showing only light surface rust, minor paint loss, and dust consistent with its age, while the glass components are free of major cracks but could use a gentle cleaning, and the vintage electrical cords are weathered and should be inspected prior to use. Feuerhand Nr. 270 Lantern: H 12", W 7", D 7"; Large Clear Oil Lamp Base: H 10", W 5", D 5"; Small Clear Oil Lamp: H 8.5", W 2.5", D 2.5"; Hand-Torch Desk Lamp: H 10", W 5.5", D 8"; Forest Scene Cylinder Light: H 7.5", W 4.5", D 4.5"; Wall Sconce Bracket: H 6", W 4", D 5". Please see photos for condition.

300.00 - 10,000.00

**4010 Vintage Porcelain Tea Set & Silverplate Pot (7)**

This delightful Victorian-style table collection features a lovely 6-piece porcelain vanity or tea set boasting vibrant pink roses, deep cobalt blue borders, and elegant gold-gilt accenting. The assembly includes a teapot with a matching lid, a footed creamer, a small footed trinket bowl, an oval serving plate, and a shell-molded footed dish. Highlighted in this group is an additional white ribbed porcelain teapot featuring a built-in wind-up music box mechanism that plays beautifully. Accompanying the porcelain is a classic, late 19th-to-early 20th-century Victorian quadruple-plated silver teapot with a hinged lid, manufactured by the historic Van Bergh



LOT #

Silver Plate Co. of Rochester, New York (marked style "25" on the base). Physically, the set presents beautifully with expected light scuffs, minor gilt wear, and typical surface oxidation on the silverplate. A bit of minor wear is present on the inner rim of the musical teapot, but all pieces remain structurally sound, free of notable cracks, and physically intact. Teapot (Silver): H 8.5", W 9", D 5". Teapot (Floral): H 5.5", W 8.5", D 5". Teapot (Music Box): H 7.5", W 10", D 6". Oval Plate: H 1", W 9.25", D 7.25". Creamer: H 3.5", W 4.5", D 3.5". Shell Dish: H 1.5", W 6.5", D 5.25". Footed Bowl: H 2.25", W 5.25", D 5.25". Please see photos for condition.

100.00 - 1,000.00

4011 Art Nouveau Brass Accents & Antique Clocks (4)

This exquisite lot captures the whimsical, nature-inspired spirit of the Art Nouveau movement and late 19th-century craftsmanship. Featured is an expandable brass/bronze book rack (stamped 9788) featuring a beautifully detailed profile of a woman with flowing hair and floral accents, expanding from 8.25" to 14.75" wide. Accompanying it is a heavily ornamented cast-metal footed centerpiece bowl (jardiniere) adorned with playful cherubs playing along the rim. The lot also includes two fascinating horological projects: a New Haven "crystal ball" desk clock (also known as a pocket watch style orb clock) with a striking blue numeral dial and a visible rear balance wheel, and a small, delicate brass pendulum clock movement that includes its swinging crutch arm with two protruding pins meant to guide the pendulum rod. The pieces show expected antique wear, including heavy patina, tarnish, and oxidation throughout; the New Haven orb clock is missing its hands, has a small chip on the front crystal, and is missing its top loop/ring, while the pendulum clock movement is currently inoperable and missing its outer housing. Book rack: H 5.5", W 8.25" to 14.75", D 5.25"; Centerpiece bowl: H 6.25", W 13", D 6.25"; Orb clock: H 2.5", W 2.5", D 2.5". Pendulum clock movement: H 9", W 2.5", D 2". Please see photos for condition.

150.00 - 10,000.00



NEW - Ghosted Goods Auction 6/11/2026

LOT #

4012 Antique Japanese Totai Shippo Tree Bark Jar

This is an exceptionally charming late 19th-century Japanese Meiji-period Totai Shippo (cloisonné enamel on ceramic) covered tea or ginger jar. This highly specialized technique showcases a rugged, matte "tree bark" textured glaze on a porcelain body, offset by standard wire-bound cloisonné cells containing finely detailed autumn flowers, a butterfly, and a bird in flight. It features a traditional dual-lid system, complete with its original white glazed porcelain inner lid disc and the textured outer cap. While the piece displays wonderfully, it does show wear typical of its age and ceramic nature, including a prominent broken section to the outer lid rim, some chipping and glaze loss to the jar's upper rim lip, and expected light wear to the foot. H 6.5", W 5", D 5". Please see photos for condition.



90.00 - 1,000.00

4013 Fireplace Bellow, Sad Iron, Pocket Level

Fireplace Bellow, Sad Iron, Pocket Level, four items in this lot includes a fireplace bellow, embossed brass plaque, wood and leather construction with brass studs, the scene on the bellow depicts figures described as a Dutch or English folk scene, possibly a pub or musical setting, leather for the air bladder, brass nozzle, missing leather on handle, 19", an Enterprise Mfg Co cast iron sad iron with a detachable wooden handle, marked with a "W", rustic patina, 6 3/4", a cast iron Enterprise trivet designed as a stand for sad irons to rest on, crack in top near the "CO", 6 1/8", and an antique Stanley No. 41 Pocket and Line Level, cast iron body, decorative brass top plate, features two small hooks as a line level and adjustable thumb screw, 3 1/2", see photos. 100.00 - 1,000.00

**4014 Slag Glass Shade, 5 yds Fringe, Grape Clusters**

Slag Glass Shade, 5 yds Fringe, Grape Clusters includes a tulip slag glass lampshade, part of a hanging chandelier or a swag pendant lamp, shades of avocado green and amber, one panel is broken, some of the metal trim is missing, black fringe along bottom edge is coming off and needs repair, 18" diameter, a bag of gold glass



LOT #

beaded fringe trim, new in bag, 5 yards, unused, and a box of lucite or art glass grape clusters used for table centerpieces, ornaments or components of lighted lamps, see photos. 100.00 - 1,000.00

4015 Vintage Globe Clock, Decor Collection Trio

This curated trio of horological and cartographic curiosities features three distinct mid-to-late 20th-century pieces. The centerpiece is a 24-hour world time quartz clock housed under a plastic dome, featuring a rotating metallic-finish globe and a secondary small inset dial. It is accompanied by a charming Spanish-made miniature library globe pencil sharpener (circa 1980s) and a fascinating "Rensie" 7-jewel wind-up alarm clock. The Rensie piece is a notable "US Zone Germany" relic, featuring a clamshell design that opens to reveal the timepiece and a dedicated space for a photograph (cut in thin plastic lens). Overall, the collection shows moderate wear consistent with age; the world clock's plastic dome has a significant crack and a missing section (approx. 4" x 2"), while the Rensie globe shows some surface tarnish and pitting. The world clock movement is functional, though the smaller quartz dial is untested. H 9", W 6.5", D 6.5". Please see photos for condition.



50.00 - 1,000.00

4016 Vintage Style Model Cannon Collection

This collection features three distinct replicas of historical artillery, headlined by a detailed field cannon model featuring a stained wood carriage and cast metal barrel with functional-style spoked wheels. Accompanying the larger model is a mid-sized bronze-finish souvenir cannon marked "Valley Forge, PA" and a miniature cast metal barrel. While these pieces capture the spirit of 19th-century weaponry, they are decorative vintage models rather than period antiques, likely produced for the mid-20th-century hobbyist or souvenir market. The pieces are in excellent structural condition, exhibiting minor surface wear and a forced patina consistent with display models of their age. Largest: H 6", W 7", D 14.5"; Medium: H 2", W 1.25", D 3.5"; Smallest: H 0.5", W 0.375", D 1". Please see photos for condition.



80.00 - 1,000.00

NEW - Ghosted Goods Auction 6/11/2026

LOT #

4017 Vintage Swiss & European Music Boxes

This impressive collection features seven diverse mechanical music boxes, showcasing the artistry of renowned makers like Thorens, Reuge, and Lador. The highlight is a stunning Reuge teal-toned metal "powder jar" box from Sainte-Croix, Switzerland, which triggers via a lid-lift mechanism to play "Oh What A Beautiful Morning." Also included is a charming hand-cranked wooden box with a maritime sailing ship motif, and a fine Thorens walnut box featuring a three-tune movement (La Traviata, Rigoletto, Il Trovatore). The lot further contains several "6-Air" movements in various states of housing, featuring classical compositions by Verdi, Strauss, and Mozart, as well as two smaller metal-cased units. Condition varies across the lot; two units are confirmed functional (the Reuge and the ship-themed crank box), while five units lack winding cranks or are currently non-functional, including one exposed movement. Visible wear includes wood scuffing, aged paper labels with some tearing, and surface patina on the metal components. H 4", W 5.5", D 5.5" (Reuge); H 2.75", W 5.5", D 3.5" (Thorens); H 2.25", W 4.25", D 3.25" (Ship box); H 1.5", W 4.25", D 3"; H 1.25", W 3.75", D 2.25". Please see photos for condition.

250.00 - 10,000.00

**4018 Four Classical Spelter & Bronze Statues**

This diverse, highly decorative four-piece collection of classical figural statues showcases popular European styles from the late 19th to early 20th centuries. The centerpiece of the group is a beautifully cast bronze Cupid figure, standing 16 inches tall with a 5-inch diameter stone base, presented in a classical winged pose. The other three statues are crafted from spelter, a popular historic casting alloy of the era. This includes a heroic soldier holding a standard, measuring 17.25 inches tall on a 5-inch diameter metal base, and a charming schoolgirl carrying a woven basket, measuring 13.25 inches tall on a 5-inch diameter metal base, both set on durable iron or matching spelter metal bases. The elegant Belle Époque gilded female figure, standing 12 inches tall on a 5-inch diameter base and posed dynamically with an empty hand where an accessory once rested, is mounted on a vintage faux-red marble



LOT #

plastic base. The collection presents in good antique condition, showing age-appropriate wear to the patinas, some weathering to the female figure's gilding, minor surface dust, and light scuffs to the bases. H 17.25", W 5", D 5". Please see photos for condition. 350.00 - 10,000.00

4019 Vintage Boudoir Accessories & Vanity Lot (13)

This exquisite 13-piece collection is a masterclass in mid-century Hollywood Regency glamour and late Victorian refinement, featuring an ornate Matson-style hand mirror with a large central sapphire-colored cabochon and multi-colored jeweled filigree. The lot includes a coordinating cut-glass powder jar with a heavily encrusted jeweled lid, a hand-painted Rosenthal porcelain trinket box signed "F. Ober" and dated 1913 with the "R.C." crown mark from Bavaria, and a charming shell-shaped porcelain dish marked "Kay-Mar, Miami, Florida, Made in Japan." Other notable items include a whimsical porcelain frog-themed desk accessory, a lipstick-shaped retractable pen, and a pair of gold-tone filigree scissors. The collection is in generally good condition; the mirror exhibits some desilvering and oxidation to the metal finish, while the porcelain items show minor shelf wear and light surface grime to the undersides. Mirror: H 14.25", W 4.25", D 1"; Glass Bowl: H 4", W 5"; Porcelain Shell: H 5", W 5", D 1"; Scissors: H 5". Please see photos for condition.

180.00 - 10,000.00

**4020 (2) Vintage Brass Table Lamps**

(2) Vintage Brass Table Lamps includes an ornate, jeweled stem with a brass finish, socket has a paddle-style turn switch with letter "B" on both sides, turns on and works, no shade, all jewels appear to be present, 15" tall, also includes a brass jeweled fairy lamp, cast metal frame adorned with faceted glass jewels, cord in good condition, but untested, all jewels present, 4 1/2" tall, see photos. 50.00 - 500.00



NEW - Ghosted Goods Auction 6/11/2026

LOT #**4021 Antique Art Glass & Aurene Shade Collection (6)**

This exquisite estate collection of Art Nouveau iridescent art glass features six magnificent pieces, highlighted by a towering cobalt-to-electric-blue iridized vase measuring H 14.25", W 7.75", D 5.75" reminiscent of Steuben or Durand, and a striking yellow-amber pulled-feather patterned vase measuring H 9.5", W 5", D 3". The collection also includes a stunning Steuben "Aurene" blue ruffled cabinet vase measuring H 3.5", W 5", D 5" (clearly signed "Aurene" and numbered "2435" on the polished pontil), two gold iridescent ribbed lamp shades measuring H 5.5", W 5", D 5" with a 1.5" fitter opening, and a miniature gold luster cabinet vase measuring H 4.75", W 1.75", D 1.75" with a 1.5" mouth. While the iridescence and color play across these pieces are exceptional, the collection exhibits significant condition issues: the largest blue vase has a crack running across its base; the yellow pulled-feather vase features a crack running along its bottom; the signed blue Aurene ruffled piece is cracked and held together with clear tape around the neck; one of the gold iridescent shades has a longitudinal crack near the fitter rim; and the small gold cabinet vase has a visible chip at the mouth opening. H 14.25", W 7.75", D 5.75" Please see photos for condition. 250.00 - 10,000.00

**4022 Vintage Cut Crystal Punch Bowl Set**

Vintage Cut Crystal Punch Bowl Set, 1970s, pressed glass with intricate geometric pattern, pinwheels and hobstars, includes 12 cups with handles, one silver-plated ladle, one WM Rogers silver-plated ladle, and a sugar/creamer pressed glass set with sterling silver footed bases, and four crystal wine glasses, minor chips around edges, good condition, see photos.

16 1/2" diameter 50.00 - 500.00

**LOT #****4023 (4) Telescopes & Binoculars**

A fine grouping of vintage maritime and field optics featuring a pair of "Marine Extra Powerful" field binoculars by the renowned Chevallier Paris, a staple of 19th-century French optical craftsmanship. The lot includes two brass draw-style telescopes: a large four-draw example with a classic leather-wrapped grip and a smaller three-draw French telescope featuring a "Made in France" stamped protective objective cap. Accompanying the set is a specialized brass tripod-mount lens assembly, likely once part of a larger surveying or nautical instrument. The leather wraps show a handsome patina consistent with age, though the binoculars are missing their central focus adjustment knob and one leg on the brass tripod lens mount has detached but remains present. The smaller telescope is missing its rear eyepiece slide cover, and the brass across all pieces shows expected oxidation and surface wear from historical use. Large Telescope: H 23.5", W 1.75"; Small Telescope: H 17.5", W 1.25"; Binoculars: H 6.5", W 5", D 2.25". Please see photos for condition.

100.00 - 1,000.00

**4024 Hand-Carved Chinese Dragon Deity Mask**

This impressive hand-carved wooden mask is a striking example of Chinese folk artistry, likely representing a Taoist immortal or a celestial deity such as Guandi. The piece features a complex headdress adorned with high-relief dragons—symbols of power and good fortune—surrounding a central "flaming pearl" and a secondary guardian face. The craftsmanship is evident in the flowing textures of the beard and the inclusion of inset glass eyes that provide a lifelike gaze. Carved from a dense, warm-toned hardwood with a polished finish, this mask likely dates to the mid-20th century. The item is in excellent vintage condition, showing only minor surface dust in the deep carvings and light scuffs consistent with age. H 10", W 8", D 4.5". Please see photos for condition.

80.00 - 1,000.00



NEW - Ghosted Goods Auction 6/11/2026

LOT #

4025 Tom Mix-Style Cowboy Hat

Tom Mix-Style Cowboy Hat, sloped "Gus" crown and wide brim, made of tan fur felt and a matching grosgrain ribbon band, reads "Let Er Buck" on both sides with cowboy on bucking bronco, faded paint, missing feather, shows some age-related wear and stain, no mark or size on inside, see photos. 50.00 - 500.00

**4026 Vintage B&J Press Camera Kit & Accessories**

This comprehensive vintage photography lot features a mid-century Burke & James (B&J) 4x5 Press Camera, a staple for professional photojournalists of the era. Manufactured in Chicago, Illinois, the camera features a rugged black body with a Kalart Synchronized Range Finder and a classic folding viewing hood. The set is housed in a period-correct, textured tan "tweed-style" carrying case manufactured by Barnett & Jaffe of Philadelphia, PA. Included in this expansive professional kit are several Riteway 4x5 film holders, a Busch 4x5 film pack adapter, a General Electric (GE) light meter in its original leather case, a flash reflector with corresponding handle, a tripod, a shutter cable release, and various Kodak lens component tins. The equipment shows honest wear consistent with professional use, including some scuffing on the camera body, minor fraying and oxidation on the case hardware, and aging to the instruction manuals; the bellows appear intact but have not been light-tested. H 12", W 17", D 11.5" Please see photos for condition. 200.00 - 10,000.00

**4027 Modern Tiffany-Style Lamp Collection (4)**

This lot offers a decorative suite of modern manufacture lamps, capturing the iconic Art Nouveau aesthetic with vibrant leaded glass and cast metal bases. The centerpiece is a 66" tall floor lamp featuring a dragonfly and botanical motif, though it is currently non-operational and requires electrical inspection. The group also includes two table lamps, standing 20" and 23" tall, and an adjustable table lamp measuring approximately 20" tall with a geometric slag glass shade. Accompanying the set is a large floral leaded glass shade, 15.5" in



LOT #

diameter and 7" tall, which lacks a finial for mounting. While the glass remains in good visual condition, the metal components show minor surface scuffs, and the floor lamp's wiring needs professional attention. H 66", W 15.5", D 15.5". Please see photos for condition. 300.00 - 10,000.00

4028 Tiffany Hand-Painted Turtle Planter Incense Holder

Tiffany & Co hand painted porcelain ceramic turtle planter and or incense burner. Presents extremely well with minimal signs of age and wear (one chip on shell near left side; "Hand Painted in France For Tiffany & Co 5645" on bottom. Perfect addition to any household! Please use photos to judge condition and bid accordingly. 4.5"t x 7.5"D x 8.5"l 400.00 - 4,000.00

**4029 60s German Cobalt Blue Vase & Mikasa Crystal Frame**

Handsome Cobalt Blue Gold Accented Floral Themed porcelain vase #02898 made in Hutschenreuther Hohenberg Germany in the 1960s (Very good overall condition with no chips or cracks noted ALONG WITH an Elegant NIB KIKASA Italian Countryside crystal 8" x 10" picture frame (14" x 12" overall); inspired by Italian Architecture. Crystal features a frosty finish with an embossed floral design. 200.00 - 10,000.00

**4030 (400-600) Vintage Postcard Assortment**

Collection features 400-600 +/- assorted vintage postcards with various subject matter from Architecture, Travel, Attractions, Comical, Black Americana, Beach and much more. Many with no writing; some with writing. Perfect addition to your collection, please use photos to judge condition and bid accordingly. 100.00 - 10,000.00



NEW - Ghosted Goods Auction 6/11/2026

LOT #

4031 Large Collection of Assorted Vintage Post Cards

Collection features 400-600 +/- assorted vintage postcards with various subject matter from Architecture, Travel, Attractions, Farming, Comical and much more. Many with no writing; some with writing. Perfect addition to your collection, please use photos to judge condition and bid accordingly. 100.00 - 10,000.00

**4032 Large Collection of (300-500) Vintage Post Cards**

Collection features 300-500 +/- assorted vintage postcards with various subject matter from Architecture, Travel, Attractions, Comical, Portraiture and much more. Many with no writing; some with writing. Perfect addition to your collection, please use photos to judge condition and bid accordingly. 100.00 - 10,000.00

**4033 Large Vintage Postcard Assortment**

Collection features 300-500 +/- assorted vintage postcards with various subject matter from Architecture, Travel, Attractions, Farming, Tobacco and much more. Many with no writing; some with writing. Perfect addition to your collection, please use photos to judge condition and bid accordingly. 100.00 - 1,000.00

**4034 Collection of (300-500) Assorted Vintage Postcards**

Collection features 300-500 +/- assorted vintage postcards with various subject matter from Architecture, Travel, Comical, Portraits, Holiday and much more. Many with no writing; some with writing. Perfect addition to your collection, please use photos to judge condition and bid accordingly. 100.00 - 10,000.00

4035 Large Collection of (300-500) Vintage Post Cards

Collection features 300-500 +/- assorted vintage postcards with various subject matter from Architecture, Travel, Comical, Portraits, Holiday and much more. Many with no writing; some with writing. Perfect addition to your collection, please use photos to judge condition and bid accordingly. 100.00 - 10,000.00



LOT #

5000 Chicago Cub Tinker to Evers to Chance Framed Print

Attractive professionally framed and matted "Tinker to Evers to Chance 1902-1912" print featuring the famous Cubs double play combination of Joe Tinker, Johnny Evers & Frank Chance. Very good overall condition with some minor stray marks indicative of age and wear; approximately 42.5"t x 26.5. Featured inside handsome wood grain frame; A Must Have for any home office or mancave. Please use photos to judge condition and bid accordingly. 100.00 - 1,000.00

**5001 Collection of Assorted MLB Artist Signed Prints**

Assorted MLB Print collection featuring "The Commerce Comet" limited edition artist signed print, "The Latin Legend" limited edition artist signed print 25" x 19", "Wrigley Field" artist signed 20.5"t x 33.5" limited edition print, "Old Memories - New Beginnings" limited Edition Miller Park artist signed 20" x 25" print, Chicago White Sox Pizza Hut 32 Sports laminated 11" x 17" place mat. Very good overall condition with minimal signs of age and wear; some discoloration in areas. Lots of Fun, Perfect addition to your collection. Please use photos to judge condition and bid accordingly. 100.00 - 10,000.00

**5003 80s Cubs Employee Handouts Letters Transfer ette +**

Seldom seen vintage Chicago Cubs Employee information and inter departmental literature including 1985, 1986 & 1987 Chicago Cubs Crowd Management General Crew Training literature along with 1986 Media Credentials, Employment award letters and Disciplinary Reports, 1985 & 1986 Chicago Cubs Employee Handbooks, 1964 Cubs Transfer-ette by Glo Art, 1972 Chicago Cubs Picture Pack Sealed, (15) assorted Chicago Cubs vintage prints, 1986 Camera Day Team Photo, 1977 Chicago Cubs Team Photo, Vintage Line Up Card, 84 & 89 Chicago Tribune newspapers, 85 Souvenir Program, Wrigley Field commemorative Baseball, (4) Assorted Sports Mugs, (3) Bobbleheads with original packaging & (2) Retro MLB Lunch boxes one of which has loose cards inside. Lots of Fun, Perfect additions to your collection. Please use photos to judge



NEW - Ghosted Goods Auction 6/11/2026

LOT #

condition and bid accordingly 100.00 - 1,000.00

5004 Singletary Berrian & Smith Signed Mini Footballs

Collection features Michael Singletary HOF 98, Bernard Berrian & Roquan Smith Autographed signed Wilson Chicago Bears World Champions two tone mini footballs. Perfect display pieces, fantastic gift ideas. Please use photos to judge condition and bid accordingly. 100.00 - 1,000.00

**5005 Collection of Assorted NFL NCAA Licensed FAN Gear+**

Collection showcases brand new assorted NFL Fan gear such as team lanyards, team decals and stickers, team wallets, team flags, team magnets, team key chains, team license plate frames and more!! Teams including Tampa Bay Buccaneers, New Orleans Saints, Eagles, Steelers, Buffalo Bills, LA Rams + along with additional college licensed items. All in new excellent overall condition. Lots of fun NFL licensed merchandise; a resellers dream. Please use photos to judge condition and bid accordingly. 100.00 - 1,000.00

**5006 Collection of Assorted MLB Bobble Heads & Figures**

Collection of assorted MLB bobble heads including 1960s ceramic Boston Red Sox w green base (broken with repairs), Cooperstown Collection Rollie Fingers, Southwest Airlines Eddie Murray bobble head, plastic Greg Maddux 4 time Cy Young Award Winner figure, plastic Nolan Ryan Arlington Stadium figure, Albert Pujols 2001 Rookie of the Year bobble head, Ken Griffey Jr limited edition 924/10000 figured (missing bat), Mark Prior Cubs bobble head, Cal Ripken Jr. Salvino limited edition 1530/1000 figure. Lots of fun, perfect additions to your collection. Please use photos to judge condition and bid accordingly. 100.00 - 1,000.00

**LOT #****5007 '45 Captain Midnight's Secret Decoder Badge & More**

Collection features 1945 Captain Midnight's Secret Squadron decoder badge, Lensatic Liquid Filled Nautical Compass & Vintage US Army Infantry Crossed Rifle Pin along with (4) assorted bobbleheads pucks and more. Perfect additions to your collection, please use photos to judge condition and bid accordingly. 100.00 - 1,000.00

**5008 Rob Gronkowski LE Relic & Philadelphia Eagle Print**

Collection features Rob Gronkowski Limited Edition 14/50 framed print showcasing a relic from a game used football; approximately 17" x 15" ALONG WITH frame and matted Philadelphia Eagles showcased inside wood grain frame approximately 19.5"t x 23.5"l. Perfect Addition to your collection, please use photos to judge condition and bid accordingly. 100.00 - 1,000.00

**5009 Collection of Assorted NFL NCAA Licensed Fan Gear+**

Collection showcases brand new assorted NFL Fan gear such as team lanyards, team decals and stickers, team wallets, team magnets, team key chains, team license plate frames and more!! Teams including Vikings, New Orleans Saints, Tennessee Titans, New York Giants and more. All in new excellent overall condition. Lots of fun NFL licensed merchandise; a resellers dream. Please use photos to judge condition and bid accordingly. 100.00 - 1,000.00

**5010 1989 90 93 Topps MLB Uncut Sheet & Starting Lineup**

1989 1990 1993 Topps Uncut MLB sportcard sheet boards. Good to very good overall condition with some age and wear including corner pin holes, edge wear and rolled. Additional NIB Jackie Robinson Cooperstown Collection, Cal Ripken Jr, Ken Griffey Jr & Greg Maddox Starting Lineups (larger examples). Lots of Fun. Perfect addition to your collection please use photos to judge condition and bid accordingly. 100.00 - 1,000.00



NEW - Ghosted Goods Auction 6/11/2026

LOT #**5011 DC & Marvel Comic Collection Justice League & More**

DC Comics Superman Strange Adventures #144 12C Atomic Knights issue; Justice League America No. 11 May 12C; Wonder Woman Nov. #94 10C; Adventure Comics May No. 284 10C issue ALONG WITH Marvel X-MEN #15 Jan, Disney's The Three Musketeers Jan 1, Marvel Spider-Man 16 Feb & Itchy & Stratchy #1 assorted comic collection. Fair to Very Good overall condition, please use photo to judge condition and bid accordingly. 100.00 - 1,000.00

**5012 Marvel Comic Collection Avengers Transformers More**

Comic collection showcases Marvel The Mighty Thor 300th Issue, Trans Formers Universe #1 DEC, West Coast Avengers #3 NOV, #4 DEC, KA-ZAR #1 JAN & #1 APR, Cloak & Dagger 1 OCT & 1 JULY, Dazzler #1 MAR, Machine Man #1 through 4, Marvel Universe #16 June, Masters of Kung FU #104 Sept, Captain America #299 Nov, The Avengers #142 DEC #233 July #257 July #272 OCT #273 NOV #271 SEPT, The Mighty Avengers #249 NOV, The New Mutants 1 MAR, Classic X Men 25th Ann #1 Sept, Fantastic Four #286 Jan, West Coast Avengers #2 OCT, Silver Surfer #1 July. Fine to Very good/Good overall condition, please use photos to judge condition and bid accordingly. 100.00 - 10,000.00

**5013 1989 Wayne Gretzky LA Kings Measure Up Standee ++**

Hard to come by 1989 Wayne Gretzky Los Angeles Kings measure up life size cardboard standee cutout. Good overall condition with moderate cosmetic flaws including creases, dings, dents and minor discoloration noted with additional vintage hockey posters (and Nolan Ryan). Perfect addition to your collection, please use photos to judge condition and bid accordingly. 100.00 - 300.00

**LOT #****6000 80s Gary Carter Northville Gas Advertising Poster**

Super cool 1980s MLB Great sponsored Northville Gas advertising print. Large and in Charge, approximately 48" x 36" laminated poster featured on board back, Good overall condition with a couple "chips" on the graphic and wear near the edges. Perfect addition to your man cave, great gift idea. Please use photos to judge condition and bid accordingly.



Note: This item requires oversized packaging, which increases the shipping cost. 100.00 - 300.00

6001 Pair of Sierra Nevada Brewing Advertising Mirrors

Pair of new in open box framed 27" Sierra Nevada Brewing advertising mirrors. Very good overall condition, perfect addition to your man cave. Please use photos to judge condition and bid accordingly. 100.00 - 200.00

**6002 Harvey's Bristol Cream Sherry Advertising Mirror**

Attractive framed 19.5"x 23.5 Harvey's Bristol Cream Pale Sherry advertising mirror. Very good overall condition, still showcased inside original shipping box. Perfect addition to your man cave. Please use photos to judge condition and bid accordingly. 100.00 - 200.00

**6003 (4) Budweiser Advertisement Misc.**

Included is the Bud Man, in rough condition and disconnected parts, which are included. a Budweiser Advertisement piece of glass that is in good condition with light chips around the corners, and a "Kessler" framed advertisement, with both frame and glass in good condition with minor imperfections. See photos and bid accordingly. 80.00 - 150.00



NEW - Ghosted Goods Auction 6/11/2026

LOT #

6004 (3) Framed Whiskey Mirror Advertisements

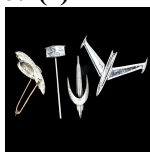
(3) Framed Mirror Advertisements.

Included are, A "Black & White" framed mirror, measures 26" x 18". A "Imported Canadian Mist" framed mirror, measures 15" x 20". Lastly a "Windsor Canadian" framed mirror, measures 15.5" x 21.5". All three framed mirrors are in great condition, with minimal signs of wear on both the frames and glass. See pictures and bid accordingly. 80.00 - 150.00

**6005 1950s Atomic Auto Hood Ornament Lot (4)**

The selection of mid-century automotive hood ornaments in this lot is a fantastic snapshot of the "Atomic Age" design aesthetic that defined American car culture, specifically focusing on the Space Race and Jet Age motifs of the early to mid-1950s.

This lot contains four distinct pieces, all appearing to be chrome-plated cast metal, including: a down-swept wing emblem (likely 1951 Mercury), a striking jet-style wing with tapered wing-tip pods (identifiable as 1956 Oldsmobile), a globe-and-ring assembly (classic 1951 Oldsmobile "World Emblem"), and a shield/crest featuring a buffalo and the letter 'K' (attributed to the 1951 Kaiser hood ornament), the latter of which is mounted to a long metal post/staff for display. The pieces are sold "as-is" and exhibit consistent age and wear: the chrome finish is uniformly speckled, pitted, and worn across all pieces, with clear signs of rust and oxidation on the mounting hardware of the jet and globe pieces. The buffalo shield is attached to a slender metal rod which appears to be for display and is not original. The globe ornament has visible oxidation and rust on its mounting bracket on the reverse. The down-swept wings ornament shows scuffing and pitting on the top surface. Overall, this is a beautiful group of original parts with a fantastic, untouched patina. Estimated Measurements: H 34", W 6", D 6" (This estimation is for the tallest piece, the Kaiser shield on the display rod). Dimensions: 1951 Mercury: 13" long, 4.5" wide, 3" tall. 1956 Oldsmobile: 12.5" wide, 5.5" tall, 3" deep (10" deep if including mounting arm). 1951 Kaiser: 5" wide, 3" tall, 1" deep. 15.5" tall with post mount. 1956 Oldsmobile: 13" long, 15" wide and 1.5" tall. See photos. 150.00 - 250.00



LOT #

6007 Svoboda's Nickelodeon Inn Souvenir Group

Assorted souvenir grouping from the famed Svoboda's Nickelodeon Inn near the southside of Chicago. Derby Caps, framed photo and more !!! Lots of fun!! Perfect addition to your collection, please use photos to judge condition and bid accordingly. 50.00 - 100.00

**6009 (30) Assorted Dolls Ornaments & Figurines**

Collection features (30) assorted Dolls, Ornaments & Figurines; some ethnic some seasonal several in displays. Very good overall condition with minimal signs of age and wear. Please use photos to judge condition and bid accordingly. 100.00 - 1,000.00

**6010 (28) Assorted Vintage Dolls Ceramics & Figurines**

Collection features (28) assorted Dolls, Ornaments, Ceramics & Figurines; some ethnic some seasonal several in displays. Very good overall condition with minimal signs of age and wear. Please use photos to judge condition and bid accordingly. 100.00 - 10,000.00

**6011 Little Shipyard Half Hull Sailboat Display & More**

Collection includes "The Little Shipyard, Setauket NY" half hull sailboat display 16"t x 13"l, "The Crab" Laura Livery signed framed 6.5"t x 8.5"l, Framed "Full Sail II" by Mary Liffler limited edition 90/300 along with a framed "Devils Triangle Survivor" framed diploma 12"t x 15"l. Perfect additions to your collection, please use photos to judge condition and bid accordingly. 100.00 - 10,000.00

**6012 Traditional Japanese Ichimatsu & Musha Ginyo Dolls**

Traditional Japanese Ichimatsu doll, named after the 18th-century Kabuki actor Sanogawa Ichimatsu I featured inside 10" x 6" x 7" display along with 10" Japanese Musha Ginyo Samurai doll figure. Perfect additions to your collection, please use photos to judge condition and bid accordingly. 100.00 - 10,000.00



NEW - Ghosted Goods Auction 6/11/2026

LOT #

6013 Morrison Bros Gas Nozzel Projectors Pepsi Phone +

Eclectic collection showcases Vintage 14" Morrison Bros. Brass Gas Pump Nozzle Dubuque, Vintage Kodak Kodal slide projector with original travel case (4" x 7.5" d x 10.5" l), 8.5" t Electro Acoustic Products Picturol Projector model EAF, vintage 14" t Pepsi Cola home wall phone, unmarked vintage wooden box and 6v battery 100.00 - 10,000.00

**6014 Wood Marching Band Baton/Barber Pole Staff**

This is a fantastic antique wooden barber pole staff, likely dating to the late 19th or early 20th century. This classic piece, featuring the iconic red and white spiral stripes, was the universal sign of the barber trade, with the colors historically referencing the blood and bandages of the barber-surgeon. The staff is constructed of wood with an applied paint finish, topped with a smooth, dark-colored metal ball finial (appearing to be copper or plated) and secured at the bottom with a heavily rusted iron/steel spike tip. The patina is truly exceptional, showing its age and use with significant paint loss, chipping, and natural wear across the entire painted shaft. The metal elements exhibit heavy oxidation and rust, particularly the spike, but the overall structure appears solid and well-preserved for its age. This piece is a true survivor and would be a highlight in any folk art or advertising collection. H 43.5", W 3", D 3" 400.00 - 600.00

**6015 Assorted Airline Branded Jackets Rain Gear & More**

Collection features two "Northwest Airlines" branded large men's jackets; one fleece lined and Eastern Airlines branded large men's rain jacket with matching pants along with 3 pairs of new Northwestern slippers and assorted airline branded travel soaps. All in very good overall condition, please use photos to judge condition and bid accordingly. 100.00 - 200.00



LOT #

6016 Vintage "Dog" Tag Display

Collection of over 140 assorted "Dog" animal tags; rabies, dog tax & registration tags featured on re purposed 19" t x 28" l cabinet door display. Perfect addition to your collection, please use photos to judge condition and bid accordingly.

Note: This item requires oversized packaging, which increases the shipping cost. 50.00 - 10,000.00

**6017 Manolo Blahnik CMINIA PVC Terracot Size 41**

Lady's NIB Manolo Blahnik OS 105 CMINIA PVC Terracot 890 open toed designer heels. Perfect with box and contents; just needs a "hot date". Great gift idea, please use photos to judge condition and bid accordingly. 100.00 - 1,000.00

**6018 Edison's The Period Timer Ford Cars Trucks Tractor**

Hard to come by original Thomas Edison, Jr. "The Period Timer" for Ford cars trucks & tractors, appears complete with tattered box; untested. Please use photos to judge condition and bid accordingly. 100.00 - 200.00

**6019 Vintage Sperti UV Infra Red Irradiation Floor Lamp**

Adjustable Sperti UV & Infra Red Irradiation floor lamp model 200 with angle shade reflector. In very good overall working condition; plugs powers up tested for a short period of time. Perfect addition to your collection, please use photos to judge condition and bid accordingly. 100.00 - 10,000.00

**6020 Imported Replica Samurai Sword Set**

3 Sword Set of Imported replica Samurai Swords. Very nice matched set of swords new in box with display stand. Very nice set ready for display. Length ranges from 17-41". See photos. 100.00 - 200.00



NEW - Ghosted Goods Auction 6/11/2026

LOT #

9000 Abstract Modernist Oil Painting by Kirk Pederson

1986 Abstract Modernist Street Scene, acrylic on canvas, artist signed Kirk Pederson '86 near right corner. Framed and approximately 46"t x 1.5"d x 80"l and in excellent overall condition. Perfect addition to your collection, please use photos to judge condition and bid accordingly.

Note: Pickup/ Transport required. Contacts available post auction. 2,000.00 - 20,000.00

**9009a Large Brass 2 Arm Bar / Pool Table Light Fixture**

Vintage solid cast brass ornate 2 arm light fixture perfect to hang over a bar or pool table. Originally oil lamps, it has been converted to electric. The original glass shades have been replaced with plastic reproductions painted black. In overall good condition with no breaks or repairs to the castings.

Measures 54" drop, 74" wide. Note: Pickup/ Transport required. Contacts available post auction. 1,000.00 - 10,000.00

**9017 Marshall Fleming Folk Art Horse Drawn Hearse**

Highly detailed folk art hearse by Marshall Fleming (see bio below). Made of hand carved wood, wood, metal, and leather, and paint. Fleming took great pride in the details of his work as evident here. The carved wood horses have metal horse shoes, the hearse has working elliptical springs, and the brake works. Mounted on a wood base with a custom plate glass cover.

There is a crudely made metal tag affixed to the base hand etched, "Built by Marshall Fleming Antioch W. Va. Measures 33" wide, 11" deep, 17" tall.

Marshall B. Fleming (1916–1998) was a self-taught woodcarver and folk artist from New Creek and Antioch,, West Virginia, known for his intricate mixed-media sculptures and hand-carved wood figures. His work often focused on capturing memories of his life, including horse-drawn wagons, farming machinery, and circus scenes. Due to the sheer volume of his work, his wife eventually "raised thunder," leading him to build a small barn near his home to act as a museum for his creations. Marshall Fleming's work is represented in major institutions including the Smithsonian Art Museum. 2,000.00 - 20,000.00



LOT #

9018 Antique Cast Iron Tobacco Cutter

Antique Cast Iron Tobacco Cutter, designed to shred or cut tobacco leaves and plugs into smaller pieces for consumption, heavy-duty cast iron, ornate decorative details, operates by using hand crank that drives a blade to chop the tobacco, marked "Gesetzlich Geschutzt" which translates to "Legally Protected", features wooden components like handles and feeding plate, age-related wear, nice industrial-style decor, good condition, see photos. 400.00 - 4,000.00

**9019 Cigar Store Advertising Wood Indian**

Believed to be old. Gesso over wood. Has been repainted some time ago. Does not look like its been repaired but has some light chips, cracks and scuffs throughout. Overall good condition. 49? T X 15? W X 16-1/2?d NOTE: Pickup/Transport required. Contacts available post-auction. 2,000.00 - 20,000.00

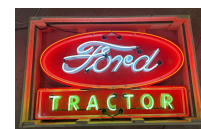
**9029 Framed Antique Painting "Allegory of Music"**

Framed Antique Painting "Allegory of Music", oil on fabric, by the French academic painter Paul-Francois Quinsac, depicts an ethereal winged figure/fairy, seated gracefully on a tree branch, dressed in a flowing white gown, soft pastel hues, housed in a large, baroque-style antique gold frame, small flaw on right side near tree trunk, good condition, see photos. Frame: 57" x 34" Canvas: 40" x 18" Note: Pickup/ Transport required. Contacts available post auction. 1,000.00 - 10,000.00

**9161 Ford Tractor Neon Advertising Sign**

Classic Ford Tractor sign with neon. Contemporary sign works perfect. deep. Perfect focal point for your home or office, please use photos to judge condition and bid accordingly. 45" x 30" x 9"

Sorry, we cannot ship neon! Note: Pickup/transport required. Contacts available post auction. 3,000.00 - 30,000.00



NEW - Ghosted Goods Auction 6/11/2026

LOT #

9162 We Use Genuine Chevy Parts Neon Advertising Sign

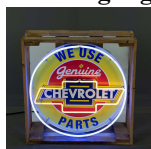
Contemporary "We Use Genuine Chevrolet Parts" neon advertising sign. Excellent overall condition; plugs and lights up as expected. "General Motor Trademark" licensed to Signs 4 Fun Inc stamped near bottom. Perfect focal point for your home or office, please use photos to judge condition and bid accordingly.

24" diameter x 9"

Sorry, we cannot ship neon! Note:

Pickup/transport required. Contacts

available post auction. 500.00 - 5,000.00

**9165 Contemporary "Chevrolet" Smith's Garage Neon Sign**

The sign comes directly from the Smith family and is ready to hang or mount on a wall, an exact replica of sign off of the front of Smith's Garage. A 1920's - 30's neon sign with a bull nose on each end. Sign was professionally restored and is in very good condition. A real eye catching, reminiscing style sign

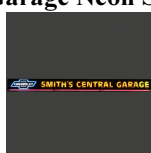
20 ft L x 9" D x 20 1/2" H.

Smith's Central Garage located at 3315 Pearl Street in Johnsburg, IL, was established in 1929 when Fred Smith purchased the business from Joe and Henry Hettermann, transforming it into a Standard Oil station and the town's first Chevrolet dealership. The historic building later became a Hostess-Wonderbread depot before being restored in 2016 into a wedding and event venue known as Smith's Central Weddings.

Sorry, we cannot ship neon! Note:

Pickup/transport required. Contacts

available post auction. 5,000.00 - 10,000.00

**9179b Restored Oil Storage Tank with Hand Pump**

Restored steel storage tank painted red with Sunoco Race Fuels decal on one side. Has hand crank dispensing pump mounted on the top. Comes with a 1/2 gallon tin pitcher with spout. In VG condition. Measures 46" tall, 31.5" wide, 10" deep. Add 18" to height for hand pump. No shipping on this item. Customer pickup or 3rd party transporter only. 200.00 - 1,000.00



LOT #

9190 Claw Foot Victorian Garden Sprinkler

Victorian garden sprinkler made by Peck Bros. & Co. New Haven Connecticut. Cast iron claw foot base with iron pipe riser. Head is made of brass with 4 water nozzles that spin when the water flows. One nozzle is missing but these are still available through car wash supply houses. Head marked Peck Bros. & Co. New Haven Conn. Peck Bros. was a large plumbing supply house on the east coast. measures 42" tall, base is 16" X 16" 200.00 - 10,000.00

**9193 Ornate Meiji Squirrel & Grape Mirror**

This exceptional Meiji-period Japanese table mirror is a masterclass in the "Squirrel and Grape" motif, a theme symbolizing fertility and harvest. Likely originating from the carving centers of Nikko or Shizuoka, the frame features incredibly deep, three-dimensional relief carving into a dense hardwood with a rich, dark patina. The lifelike squirrels with inset eyes are nestled among undercut vines and grape clusters, accented by striking gilt-painted autumnal leaves. While similar in theme to European Black Forest works, the specific scrollwork and high-relief execution are hallmarks of late 19th-century Japanese craftsmanship. The item is in generally good condition; however, there is a visible crack and an older professional repair on the upper right portion of the frame, and further separation is visible where the bottom of the frame meets the side ends. The mirror glass displays light, age-appropriate silvering oxidation and surface dust. H 21.25", W 19.0", D 7.5". Please see photos for condition.

800.00 - 10,000.00

**9209 Tiffany Studios Gold Dore Bronze Tazza #1702**

Tiffany Studios Gilt Bronze Tazza #1702, shallow pedestal bowl features a textured, gold dore finish and acid-etched design, manufactured by Tiffany Studios between 1878 and 1933, stamped markings on very bottom "Tiffany Studios New York 1702", the letters "FHB" monogram in the center, age-related patina, good condition, see photos.

Beautiful catch-all" or table decoration.

6.25" x 3.5" 1,000.00 - 10,000.00



NEW - Ghosted Goods Auction 6/11/2026

LOT #

9221 Kelvinator Electric Porcelain Advertising Sign

This porcelain enamel sign represents the dawn of the modern kitchen, advertising "Install Kelvinator Electric Refrigeration" in bold cobalt blue against a stark white field. Manufactured by the renowned Baltimore Enamel company at 200 Fifth Ave, N.Y., as marked on the lower right, this square sign likely dates to the 1920s or 1930s when electric cooling was swiftly replacing the domestic icebox, has mounting holes with some hardware currently attached and wire rigging on the back. Condition includes a significant area of enamel loss and corrosion on the left vertical edge, roughly midway down, along with visible rust staining emanating from the mounting points, general surface wear, and scattered surface scratches typical of age, see photos.

24" x 22 1,000.00 - 10,000.00

**9225a Rare, Rare Hasty & Johnson Shoe Shine Stand**

Impress and entertain your friends with this extremely rare shoe shine stand that originated in Stefanato's Cigar Store, hotel in downtown Wabash IN. Circa around 1890. The stand has a very impressive mechanism, that when the front drawer is pulled out, which contains the various sizes of polishing pads, the foot rests extend out for use. There is a small counting mechanism which keeps track of the number of customers. Also adding to the rarity of the stand is probably one of the first to use an electric motorized flexible cable that utilizes the polishing pads to buff shoes. The chair base is constructed of mahogany wood and marble. Item looks complete. Here is your chance to own a seldom seen museum type item. Overall good condition.

37" L x 24" W x 56" H (with chair)

2,500.00 - 100,000.00



LOT #

9228 Coca-Cola Reverse-Painted Glass Advertising Sign

Coca-Cola Glass Advertising Sign, owner had this sign for over 40 years and tells us it is not original, reverse-painted glass featuring a lithographed Flapper Girl holding a glass of Coca-Cola, classic red and gold branding, comes with a metal hanging chain, "Property of Coca-Cola Bottling Company, Atlanta, GA" on gold edge, minor surface scratches on glass, good condition, see photos. Highly sought-after collectible piece!

22" x 13" 1,000.00 - 10,000.00

**9248 Large Vintage Cast Iron Garden Gnome on Pedestal**

Nicely detailed cast iron garden statue of a gnome on a pedestal by American Hart Foundry of Atlanta Georgia. In overall VG condition with no cracks, breaks, or repairs. Missing the little lantern that he held in his right hand. Retains 50+ % of original paint. Measures 43" tall, 10" wide, 10" deep. No shipping on this item. Customer pickup or 3rd party transport only. The American Hart Foundry was active in the mid 20th century, primarily gaining a reputation during the post-WWII housing boom when suburban garden decorations spiked in popularity. Their most recognizable products are highly detailed, heavy vintage cast iron gnomes frequently cast as a multi-piece set featuring a gnome and a separate matching base. They are highly praised by collectors for their expressive, whimsical facial features. 3,000.00 - 10,000.00

**9250a Life-Size Wax "Lily Becker" Bust- Of Debra Paget**

This intriguing life-size sculptural bust serves as a fascinating relic, potentially linked to the 1952 biographical film Stars and Stripes Forever. In the movie, the character "Lily Becker"—portrayed by the luminous Hollywood starlet Debra Paget—is the romantic lead. While Paget was often cast as the "exotic" ingenue, her career frequently intersected with the "vamp" archetype of the era—a persona characterized by the sultry, captivating mystery that fascinated 1950s audiences. Unlike a standard retail mannequin, this bust features a distinct, lifelike quality, crafted from a durable molded



NEW - Ghosted Goods Auction 6/11/2026

LOT #

wax-composition. It showcases hand-painted facial detailing with arched brows and a bold red lip, reflecting the classic Hollywood glamour aesthetic Paget embodied. The hollow interior reveals a reinforced structural shell, consistent with specialized studio or display props of the mid-century period. The base bears an impressed "110" and a handwritten "56" in marker, likely denoting internal inventory or production cataloging. The piece shows age-appropriate wear, including minor scuffs, light surface abrasions, and the expected settling of the dark, styled synthetic wig. H 15", W 10", D 8.5". Please see photos for condition. 800.00 - 10,000.00